

SURVEY & REMONUMENTATION

OCT 24 1994

COMMISSION

OTTAWA COUNTY REMONUMENTATION
LAND CORNER RECORDATION CERTIFICATE
Filing Requirement of Act 74, Mich. P.A. 1970

RECORDED

94 OCT -7 PM 12:33

Ralph A. Ballman
REGISTER OF DEEDS
OTTAWA COUNTY, MI

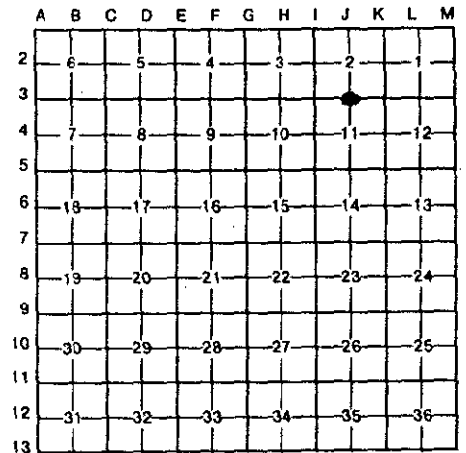
For corners in

Ottawa (County)	Located In:	Corner Code #
1. Public Land Survey	T 6N R 14W	J-3N1/4 COR Sec. 11, Blendon
	T R	
	T R	
	T R	
2. Property Controlling in Section	S T R	
	S T R	
3. Miscellaneous Property in Sec.	S T R	
	S T R	
4. Lot No. _____, Recorded Plat _____		
5. Private Claims _____		

Register of Deeds Stamp & File Number

I, Randal D. Feenstra, in a field survey on May 26, 19 94, do hereby certify that under requirements of P.A. 74, Michigan P.A. of 1970, the corner points mentioned in lines 1 and 2 above were in conformance with regulations and rules therefore as required in the current manual of survey instructions of the United States Department of the Interior, Bureau of Land Management or by a decree of a Court of Law and/or that the corner points mentioned in lines 3, 4 and 5 above were in conformance with the rules of the Michigan Board of Land Surveyors or by a Decree of a Court of Law; established, re-established, monumented, re-monumented, recovered, found as expressed below:

NOTE: Not more than 4 corners, all in the same town and range, may be recorded on this certificate.



A. Description of original monument and accessories and/or subsequent restoration:

BLD (1838)	L-2 Page 125 (1973)
3" Maple N81°E 7.3	3/4" Pipe
10" Maple S55°W 15:8	Fence Post S 22.08
POST	PP NE 85:01
Samuel Marrs	TP NW 53:50

B. Description of corner evidence found and/or method applied in restoring or reestablishing corner:

Found 3/4" Bar - accepted as a careful and faithful perpetuation of the position of the original corner.

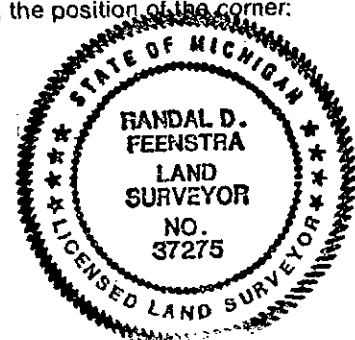
Found Witnesses:
Pk in NW side Fence Post S00°W 21.22
Spike in S side 30" Triple Maple N70°W 85.02
Nail in E side Fence Post S00°W 21.94

P.A. 345 OTTAWA COUNTY
PEER APPROVED 8/22/94

Randal D. Feenstra

C. Description of monument for corner and accessories established to perpetuate locating the position of the corner:

J-3 Set O.C. Remon. Bar & Cap	
J.C. Nail & tag E side 10" N10°E	23.14'
J.C. Nail & tag W side Fence Post S00°W	21.73'
J.C. Nail & tag S side 30" Triple Maple N70°W	85.09'
J.C. Nail & tag N side 20" Maple S75°W	112.72'
CL of Taylor	



Signed by Randal D. Feenstra

Date May 26, 1994

Surveyor's Michigan License No. 37275

FORM APPROVED BY MICHIGAN STATE BOARD OF LAND SURVEYORS, JAN. 28, 1971
REVISED MAY 14, 1975
REVISED JAN., 1983