

FEB 24 2000

RECORDED

99 SEP 23 PM 3: 21

SECTION

OTTAWA COUNTY REMONUMENTATION
LAND CORNER RECORDATION CERTIFICATE

Gary Schubert
REGISTER OF DEEDS
OTTAWA COUNTY, MI

For corners in

Filing Requirement of Act 74, Mich. P.A. 1970

Ottawa (County)	Located in:	Corner Code #
1. Public Land Survey	T 6N R15W	C-1
	T _____ R _____	(NW cor., Sec. 5
	T _____ R _____	Olive Twp.)
	T _____ R _____	
2. Property Controlling in Section	S _____ T _____ R _____	
	S _____ T _____ R _____	
3. Miscellaneous Property in Sec.	S _____ T _____ R _____	
	S _____ T _____ R _____	

Register of Deeds Stamp & File Number

- 4. Lot No. _____, Recorded Plat _____
- 5. Private Claims _____

	A	B	C	D	E	F	G	H	I	J	K	L
2	6		5		4		3		2		1	
3												
4	7		8		9		10		11		12	
5												
6	18		17		16		15		14		13	
7												
8	19		20		21		22		23		24	
9												
10	30		29		28		27		26		25	
11												
12	31		32		33		34		35		36	
13												

I, Douglas J. Koning, in a field survey on September 3, 1999, do hereby certify that under requirements of P.A. 74, Michigan P.A. of 1970, the corner points mentioned in lines 1 and 2 above were in conformance with regulations and rules therefore as required in the current manual of survey instructions of the United States Department of the Interior, Bureau of Land Management or by a decree of a Court of Law and/or that the corner points mentioned in lines 3, 4 and 5 above were in conformance with the rules of the Michigan Board of Land Surveyors or by a Decree of a Court of Law; established, re-established, monumented, re-monumented, recovered, found as expressed below:

NOTE: Not more than 4 corners, all in the same town and range, may be recorded on this certificate.

A. Description of original monument and accessories and/of subsequent restoration:

C-1 Government Notes
Set Post May 1832
By Calvin Britain D.S.
Tamarack 7" N55°E 35 Links
Leo 12" N31°W 16 Links
N Boundary 3.00 W of post &
set corner to sec. 5 & 6
Tamarack 8" is post

L.C.R.C. Liber 2, Page 571
September 1974, (J. Clapp)
C-1 Found "T" Iron & Stump
Set Cast Iron Monument
14" Maple SW 46.73'
20" Twin Maple WSW 63.60'
Clump 6" Maple SE 66.58'
Centerline W End concrete culvert SW 29.50'
Robinson corner E 199.47'

L.C.R.C. Liber 6, Page 73
December 1990, (R. Milliron)
C-1 Set Cast Monument
E 199.44 to Robinson Township C-13
NW 107.02 to Nail S side wood post
WSW 92.00 to Nail N side 12" stump
SW 46.72 to Nail & cap NE side 16" stump
SSW 176.21 to Nail E side clump 4" maples

B. Description of corner evidence found and/or method applied in restoring or reestablishing corner.

C-1 Found Cast Iron Monument in box 3.24' North of Township line (Closing Corner)
Found Nail E side clump of maples SSW 176.22'
Robinson corner (C-13, T7N, R15W) E 199.43'
This marker is accepted as a careful and faithful perpetuation of the original corner.

Found P.K. & Tag #14091 on Township line and the intersection of the West line of Section 5.

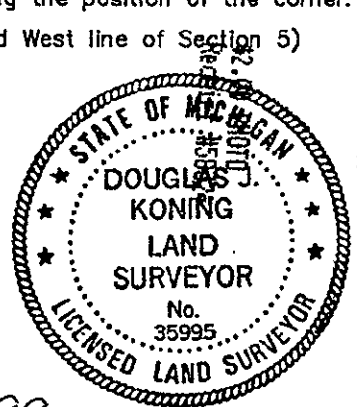
C. Description of monument for corner and accessories established to perpetuate locating the position of the corner.

C-1 Set 3/4" form pin & Remon cap in Mon. box (at intersection of Township line and West line of Section 5)
Set Remon Tag & Nail SW corner 4x4 post S43°E 48.0'
Set Remon Tag & Nail W side 12" stump S4°W 171.80'
Set Remon Tag & Nail NE side 12" poplar N60°W 134.09'
Set Remon Tag & Nail S side 18" Maple N68°E 235.16'
Top center of hydrant N84°E 242.46'
Robinson corner (C-13, T7N, R15W) East 199.40'
Cast Iron Monumnet on Mon. box (closing corner) North 3.24'

9/13/99 (see sketch on back)

Signed by Douglas J. Koning
Surveyor's Michigan License No. 35995

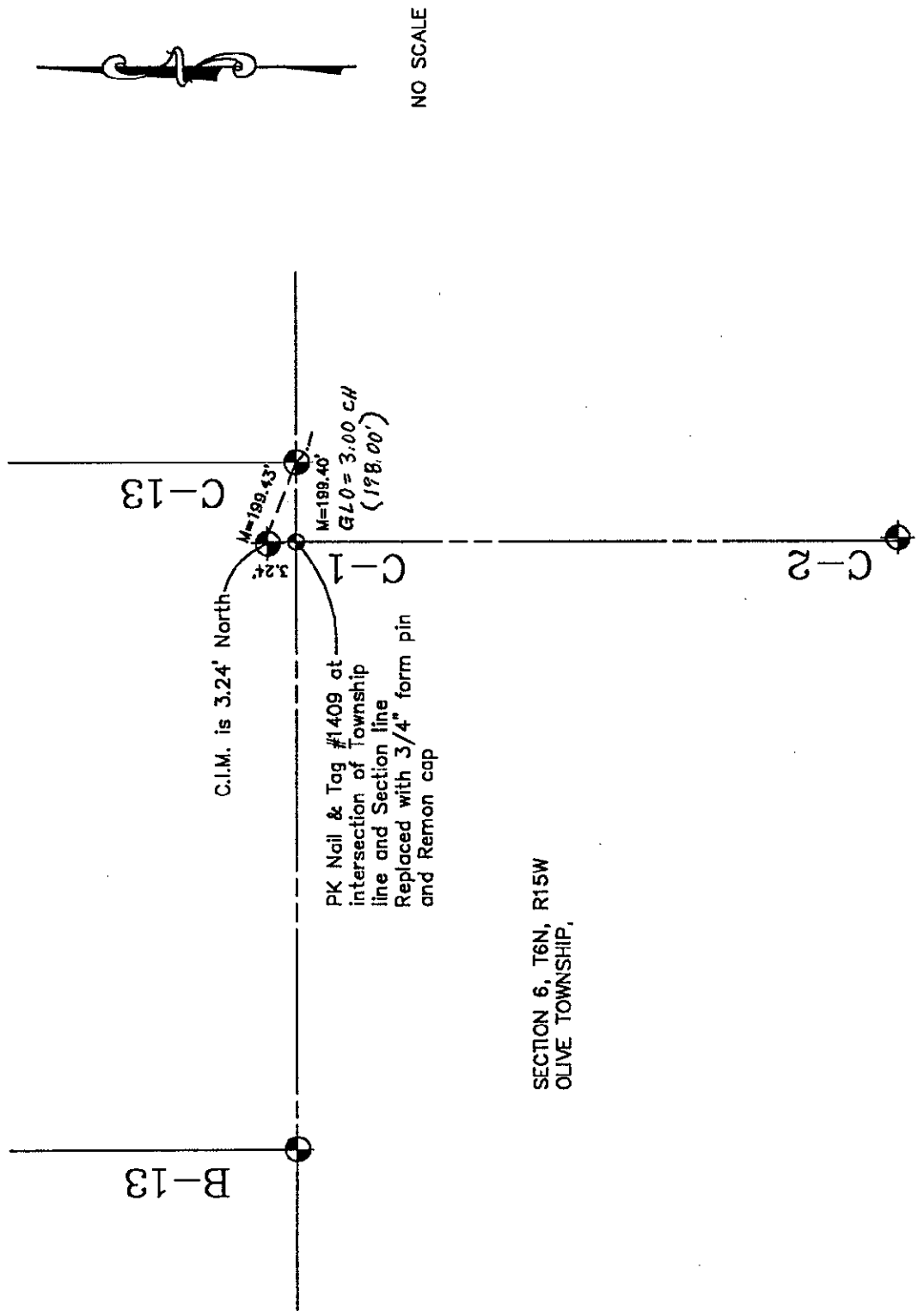
Date 9-13-99
Liber 4 Page 400



FEB 24 2000

SECTION

SECTION 31, T7N, R15W
ROBINSON TOWNSHIP



NO SCALE