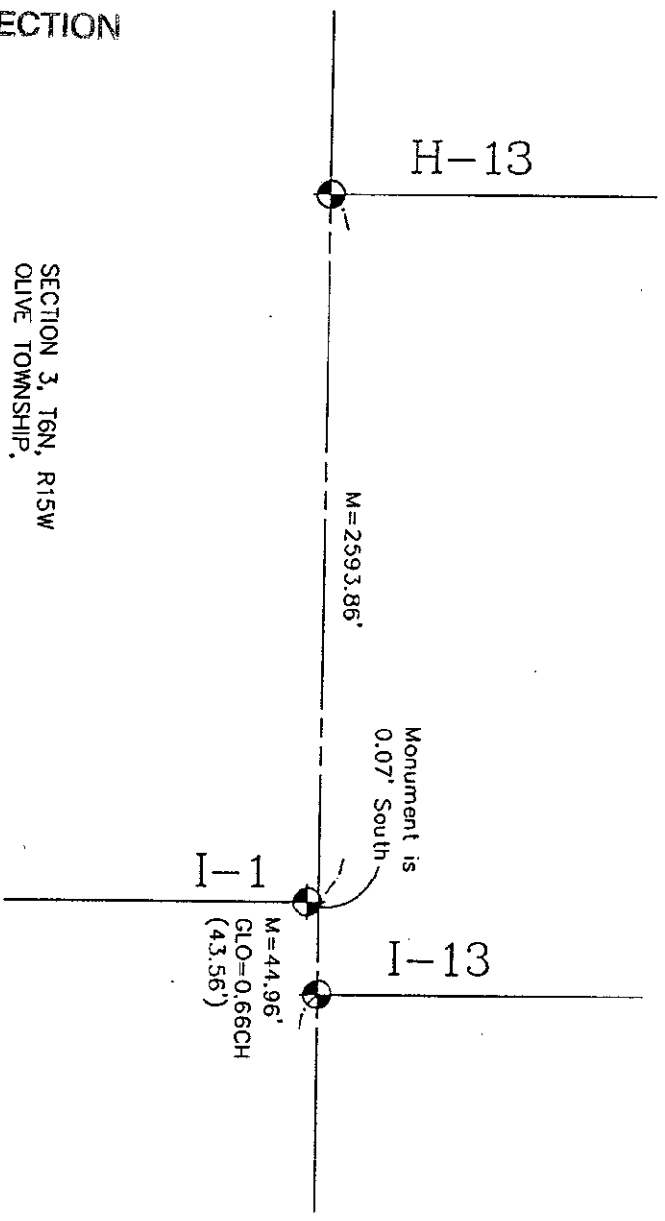


A. Description of original monument and accessories and/or subsequent restoration: (cont.)

L.C.R.C. Liber 3, Page 206, November 1977
 I-1 Cost Iron Monument
 Tel. Pole NE 41.78'
 Iron East 45.01'
 20" Ash ESE 122.60'
 24" Oak SWS 58.10'
 43.56' West of Post

L.C.R.C. Liber 6, Page 133, May 1991
 I-1 Cost Monument
 East 44.91' to Robinson Corner
 NE 41.72' to Tel. Pole
 N75°E 86.04' to South edge Stop sign post
 S45°W 43.84' to Nail NW side 4"x4" post
 N40°W 44.15' to PK Nail NE side 4"x4" post

SECTION 34, T7N, R15W
 ROBINSON TOWNSHIP



NO SCALE

SURVEY &
 REMONUMENTATION

JUN 28 1999

SECTION

SECTION 3, T6N, R15W
 OLIVE TOWNSHIP