

FEB 4 2000

RECORDED

99 OCT 27 PM 1:49

Ottawa County Remonumentation
LAND CORNER RECORDATION CERTIFICATE
Filing Requirement of Act 74, Mich. P.A. 1970

SECTION

For corners in

Ottawa (County)	Located In:	Corner Code #
1. Public Land Survey	T <u>7N</u> R <u>13W</u>	<u>C-4</u>
	T ___ R ___	<u>W 1/4 corner, Section 8</u>
	T ___ R ___	<u>Tailmadge Township</u>
	T ___ R ___	_____
2. Property Controlling in Section	S ___ T ___ R ___	_____
	S ___ T ___ R ___	_____
3. Miscellaneous Property in Sec.	S ___ T ___ R ___	_____
	S ___ T ___ R ___	_____

Dany H. Hiltner
REGISTER OF DEEDS
OTTAWA COUNTY, MI

Register of Deeds Stamp & File Number

4. Lot No. _____, Recorded Plat _____
5. Private Claims _____

I, Maurice J. Rosema, in a field survey on Oct 16, 1999 do hereby state that under requirements of P.A. 74, Michigan P.A. of 1970, the corner points mentioned in lines 1 and 2 above were in conformance with regulations and rules therefore as required in the current manual of survey instructions of the United States Department of the Interior, Bureau of Land Management or by a decree of a Court of Law and /or that the corner points mentioned in lines 3, 4 and 5 above were in conformance with the rules of the Michigan Board of Land Surveyors or by a Decree of a Court of Law, established, re-established, monumented, recovered, found as expressed below:

NOTE: Not more than 2 corners, all in the same town and range, may be recorded on this certificate.

	A	B	C	D	E	F	G	H	I	J	K	L	I
1													
2	6		5		4		3		2		1		
3													
4	7		8		9		10		11		12		
5													
6	18		17		16		15		14		13		
7													
8	19		20		21		22		23		24		
9													
10	30		29		28		27		26		25		
11													
12	31		32		33		34		35		36		
13													

A. Description of original monument and accessories and/or subsequent restoration:

C-4
 GLO - 1838 LCRC per Liber 2, Page 523
 R. Whitcomb D.S. (Clapp - 1974)
 Set post 1" gas pipe
 12" Beech - N66½°W 24" Oak - SSW 7.41'
 8 links 12" Oak - NW 30.65'
 8" Beech - S25°E fence to east
 25 links

LCRC per Liber 5, Page 336
 (Rosema - 1988)
 C.I. monument
 Nail in W side 24" Oak - SSW 8.62'
 Nail and tag in SW side 12' Maple - NW 31.05'
 Nail and tag in NW side 4" Maple - NE 12.54'

B. Description of corner evidence found and/or method applied in restoring or reestablishing corner:

C-4
 Found Cast iron monument on North and South fence line at grade
 Found nail and tag in W side 24" Maple - S23°W 8.62'
 Found nail and tag in SW side 24" Maple - N42°W 31.14'
 Found nail and tag in W side "dead" 4" tree - N25°E 12.54'

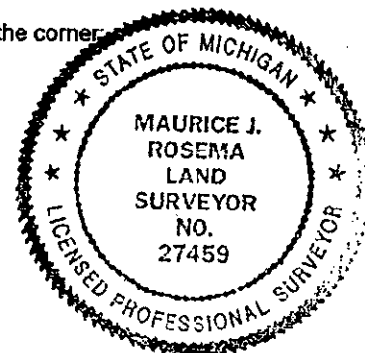
PAID TO OTTAWA COUNTY
10/18/99

MJR

I hereby accept this corner as a correct and accurate perpetuation of the position of the original corner.

C. Description of monument for corner and accessories established to perpetuate locating the position of the corner:

C-4
 Cast iron monument
 Set nail and remonumentation tag in W side 4" Ironwood - N20°E 23.18'
 Set nail and remonumentation tag in W side 24" Maple - S23°W 8.62'
 Set nail and remonumentation tag in E side 6" Oak - N37°W 8.71'
 Set nail and remonumentation tag in SW side 3" Maple - S35°E 4.61'
 Set nail and remonumentation tag in SW side 24" Maple - N42°W 31.14'
 This corner lies on the side of a hill, on a N - S fence line, 75± E of house no. 13330



77000000
Receipt #61757

Signed by *Maurice J. Rosema*
Surveyor's Michigan License No. 27459

Date October 16, 1999