

FEB 24 2000

RECORDED

99 OCT 27 PM 1:49

Ottawa County Remonumentation LAND CORNER RECORDATION CERTIFICATE Filing Requirement of Act 74, Mich. P.A. 1970

SECTION

For corners in

REGISTER OF DEEDS GREAT LAKES DISTRICT

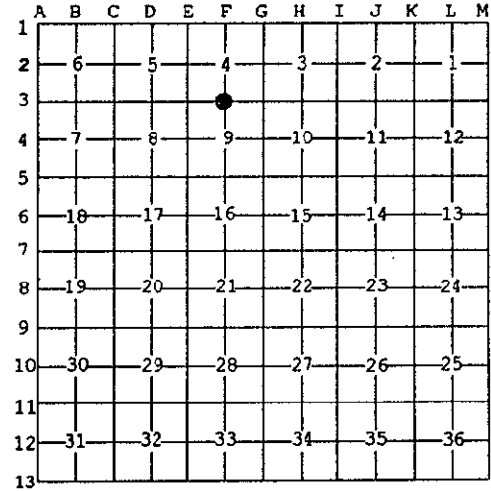
Table with columns: Ottawa (County), Located In:, Corner Code #. Includes entries for Public Land Survey, Property Controlling in Section, and Miscellaneous Property in Sec.

Register of Deeds Stamp & File Number

4. Lot No. , Recorded Plat
5. Private Claims

I, Maurice J. Rosema, in a field survey on Oct. 16, 1999 do hereby state that under requirements of P.A. 74, Michigan P.A. of 1970, the corner points mentioned in lines 1 and 2 above were in conformance with regulations and rules therefore as required in the current manual of survey instructions of the United States Department of the Interior, Bureau of Land Management or by a decree of a Court of Law and/or that the corner points mentioned in lines 3, 4 and 5 above were in conformance with the rules of the Michigan Board of Land Surveyors or by a Decree of a Court of Law; established, re-established, monumented, recovered, found as expressed below:

NOTE: Not more than 2 corners, all in the same town and range, may be recorded on this certificate.



A. Description of original monument and accessories and/or subsequent restoration:

Table with 4 columns of monument descriptions and their corresponding references (e.g., LCRC per Liber 3, Page 85; Englert - 1976; Joiner - 1988).

B. Description of corner evidence found and/or method applied in restoring or reestablishing corner:

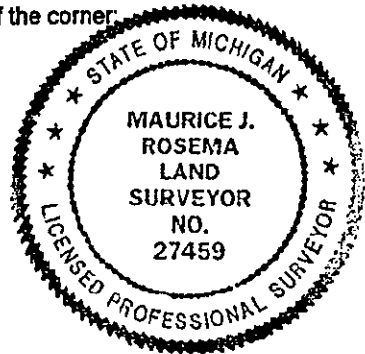
Found Cast iron monument on centerline of E - W gravel road 0.4' below grade, on fence line to S
Found nail in SE side 9" Ash - S35°E 52.48'
Found nail in E side 24" Maple - S2°W 44.86'

Handwritten signature and date: 10/18/99

I hereby accept this corner as a correct and accurate perpetuation of the position of the original corner.

C. Description of monument for corner and accessories established to perpetuate locating the position of the corner:

F-3
Cast iron monument
Set nail and remonumentation tag in SE side 9" Ash - S35°E 52.48'
Set nail and remonumentation tag in E side 24" Maple - S2°W 44.86'
Set nail and remonumentation tag in S side 6" Maple - N65°E 63.08'
Set nail and remonumentation tag in SE side 6" Maple - N42°E 71.86'
Capped re-rod - N2°E 33.00'



99.00 CORNER Receipt #61757

Signed by [Signature]
Surveyor's Michigan License No. 27459

Date October 16, 1999