

FEB 24 2000

Ottawa County Remonumentation
LAND CORNER RECORDATION CERTIFICATE
Filing Requirement of Act 74, Mich. P.A. 1970

RECORDED

99 OCT 27 PM 1:50

For corners in SECTION

Lang
REGISTER OF DEEDS
OTTAWA COUNTY, MI

Ottawa (County)	Located In:	Corner Code #
1. Public Land Survey	T <u>7N</u> R <u>14W</u>	<u>A-5</u>
	T ___ R ___	<u>NW. corner of Section 18</u>
	T ___ R ___	<u>Allendale Township</u>
	T ___ R ___	_____
2. Property Controlling in Section	S ___ T ___ R ___	_____
	S ___ T ___ R ___	_____
3. Miscellaneous Property in Sec.	S ___ T ___ R ___	_____
	S ___ T ___ R ___	_____

Register of Deeds Stamp & File Number

4. Lot No. _____, Recorded Plat _____
5. Private Claims _____

I, Maurice J. Rosema, in a field survey on July 28, 1999 do hereby state that under requirements of P.A. 74, Michigan P.A. of 1970, the corner points mentioned in lines 1 and 2 above were in conformance with regulations and rules therefore as required in the current manual of survey instructions of the United States Department of the Interior, Bureau of Land Management or by a decree of a Court of Law and /or that the corner points mentioned in lines 3, 4 and 5 above were in conformance with the rules of the Michigan Board of Land Surveyors or by a Decree of a Court of Law; established, re-established, monumented, recovered, found as expressed below:

	A	B	C	D	E	F	G	H	I	J	K	L	M
1													
2	6	5	4	3	2	1							
3													
4	7	8	9	10	11	12							
5													
6	18	17	16	15	14	13							
7													
8	19	20	21	22	23	24							
9													
10	30	29	28	27	26	25							
11													
12	31	32	33	34	35	36							
13													

NOTE: Not more than 2 corners, all in the same town and range, may be recorded on this certificate.

A. Description of original monument and accessories and/or subsequent restoration:

A-5	LCRC per Liber 5, Page 288	LCRC per Liber 4, Page 1
GLO - 1837	(Rosema - 1985)	(Joiner - 1979)
J. Mullett D.S.	Cast iron monument	Cast iron monument
40" Maple -	NE. house corner - WSW. 55.99'	NE. corner house foundation
N58°E 28 links	Nail in W. side 36" Maple - N. 46.65'	- SW. 55.98'
20" Beech -	Nail in E. side 12" tri. W. Cherry - NNW. 80.49'	12" Black Cherry - NW. 79.61'
S21°E 37 links	Nail and cap in face 15" Walnut - NNE. 32.80'	37" Maple - N. 46.00'
	Cast iron monument (Robinson twp. corner) - N. 52.61'	16" Ash - NE. 32.72'

LCRC per Liber 4, Page 1
(Joiner - 1979)
Cast iron monument
NE. corner house foundation
- SW. 55.98'
12" Black Cherry - NW. 79.61'
37" Maple - N. 46.00'
16" Ash - NE. 32.72'

B. Description of corner evidence found and/or method applied in restoring or reestablishing corner:

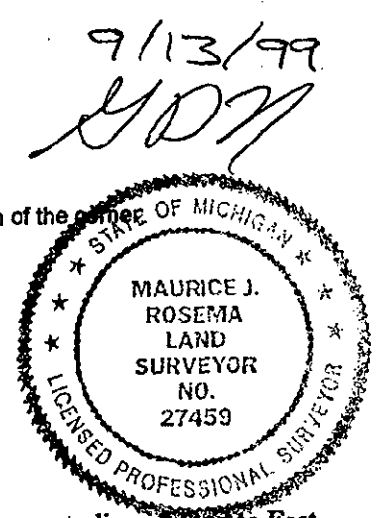
A-5
Found Cast iron monument 0.43' W. of township line, set 3/4" X 3' steel rod with remonumentation cap on township line
Found the following witnesses to the Cast iron monument:
NE. corner of house foundation - S77°W 55.87'
Cast iron monument - N2°E 52.63'

See sketch on back.

I hereby accept this corner as a correct and accurate perpetuation of the position of the original corner.

C. Description of monument for corner and accessories established to perpetuate locating the position of the corner:

A-5
3/4" X 3' steel rod with remonumentation cap
Set nail and remonumentation tag in E. side railroad tie fence post - N2°E 67.20'
Set nail and remonumentation tag in SE. side 20" Hickory - N38°E 32.95'
Set nail and remonumentation tag in SW. side of wood post at T. box - S58°E 73.91'
Set nail and remonumentation tag in SE. side of 20" Maple - S28°W 56.76'
NE. corner of house foundation - S77°W 55.30'
Cast iron monument - N2°E 52.63'
Cast iron monument - W. 0.43' (closing corner)
Centerline of gravel road to South - E 14'±; Centerline of gravel road to West - N 50'±; On centerline of road to East August 16, 1999



Signed by Maurice J. Rosema
Surveyor's Michigan License No. 27459

Date _____

Receipt #61757

FEB 24 2000

SECTION

