

DEC 01 1998

SECTION

OTTAWA COUNTY REMONUMENTATION

LAND CORNER RECORDATION CERTIFICATE
Filing Requirement of Act 74, Mich. P.A. 1970

For corners in
OTTAWA

(County)

Located In:

Corner Code #

1. Public Land Survey

T 7N R 14W A-7 (NW corner
Section 19)
Allendale Twp.

2. Property Controlling
in Section

S T R

3. Miscellaneous
Property in Sec.

S T R

S T R

RECORDED

98 SEP 29 PM 1:57

Randy S. Vugteveen
REGISTER OF DEEDS
OTTAWA COUNTY, MI

Register of Deeds Stamp & File Number

4. Lot No. _____, Recorded Plat _____
5. Private Claims _____

Randal J. Vugteveen

I, _____, in a field survey on May 5, 1998 do hereby state that under requirements of P.A. 74, Michigan P.A. of 1970, the corner points mentioned in lines 1 and 2 above were in conformance with regulations and rules therefore as required in the current manual of survey instructions of the United States Department of the Interior, Bureau of Land Management or by a decree of a Court of Law and/or that the corner points mentioned in lines 3, 4 and 5 above were in conformance with the rules of the Michigan Board of Land Surveyors or by a Decree of a Court of Law, established, re-established, monumented, recovered, found as expressed below:

NOTE: Not more than 2 corners, all in the same town and range, may be recorded on this certificate.

	A	B	C	D	E	F	G	H	I	J	K	L	M
1													
2	6		5		4		3		2		1		
3													
4	7		8		9		10		11		12		
5													
6	18		17		16		15		14		13		
7													
8	19		20		21		22		23		24		
9													
10	30		29		28		27		26		25		
11													
12	31		32		33		34		35		36		
13													

A. Description of original monument and accessories and/or subsequent restoration:

A-7 set by G.L.O. May 1832

Set corner

12" Hemlock at corner post at Robinson Corner

North 85 Links (56.10')

Liber 4 Page 38

Byl Dec. 1978

Cast Iron Monument

30" Ash NNW 66.20'

10" Apple SSE 40.30'

Power Pole ENE 103.51'

B. Description of corner evidence found and/or method applied in restoring or reestablishing corner:

A-7 Found Cast Iron Monument

Fd nail in face dead 30" Ash Az 344° 66.20'

Fd nail in face power pole Az 66°-103.57'

Fd cast Iron Monument North 51.64(Robinson Corner)

Accepted Cast Iron Monument as a careful and faithful perpetuation of the position of the original corner.

OTTAWA COUNTY

6/1/98

C. Description of monument for corner and accessories established to perpetuate locating the position of the corner:

A-7 Cast Iron Monument 0.04' West of Town Line (witness below are measured to monument)

Cast Iron at Robinson cor Az 0° 51.64'

Nail and Ottawa County Remon Tag E. side 4" Tele. Pedestal Post Az 186° 23.00'

Nail and Ottawa County Remon Tag S. side Power Pole Az 66° 103.88'

Nail and Ottawa County Remon Tag NE side 12" Poplar Az 304° 116.48'

Center of Ditch Az 0° 3.0'+-

Center of Buchanan St. Az 0° 25'+-

Signed by

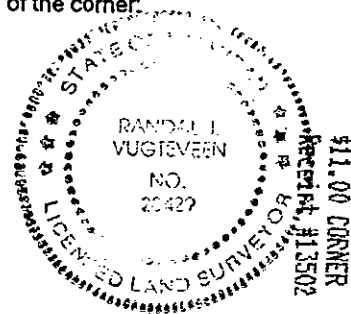
Randal J. Vugteveen

Date

July 23, 1998

Surveyor's Michigan License No.

28429



SURVEY &
REMONUMENTATION

DEC 01 1998

SECTION



A-7
ALLENDALE TOWNSHIP

