

SURVEY & REMONUMENTATION

DEC 01 1998

OTTAWA COUNTY REMONUMENTATION

SECTION

LAND CORNER RECORDATION CERTIFICATE
Filing Requirement of Act 74, Mich. P.A. 1970

RECORDED

98 SEP 29 PM 1:57

For corners in
OTTAWA
(County)

Located In:	Corner Code #
T <u>7</u> N R <u>14</u> W	A-9 (NW corner Section 30) Allendale Twp
T ___ R ___	_____
T ___ R ___	_____
T ___ R ___	_____
S ___ T ___ R ___	_____
S ___ T ___ R ___	_____
S ___ T ___ R ___	_____
S ___ T ___ R ___	_____

Randy Hubbert
REGISTER OF DEEDS
OTTAWA COUNTY, MI

Register of Deeds Stamp & File Number

4. Lot No. _____, Recorded Plat _____
5. Private Claims _____

I, Randal J. Vugteveen, in a field survey on April 16, 1998 do hereby state that under requirements of P.A. 74, Michigan P.A. of 1970, the corner points mentioned in lines 1 and 2 above were in conformance with regulations and rules therefore as required in the current manual of survey instructions of the United States Department of the Interior, Bureau of Land Management or by a decree of a Court of Law and for that the corner points mentioned in lines 3, 4 and 5 above were in conformance with the rules of the Michigan Board of Land Surveyors or by a Decree of a Court of Law; established, re-established, monumented, recovered, found as expressed below:

NOTE: Not more than 2 corners, all in the same town and range, may be recorded on this certificate.

A	B	C	D	E	F	G	H	I	J	K	L	M
1												
2	6	5	4	3	2	1						
3												
4	7	8	9	10	11	12						
5												
6	10	17	16	15	14	13						
7												
8	19	20	21	22	23	24						
9												
10	30	29	28	27	26	25						
11												
12	31	32	33	34	35	36						
13												

A. Description of original monument and accessories and/or subsequent restoration:

A-9 set by G.L.O. May, 1832
Set corner
12" Hemlock S18°E 38 links
12" Beech N15°E 27 links
Post at Robinson corner 80 links
North (52.80')

Liber 2 Page 467 (May 1974)
A-9 Angle Iron
NW corner of building SE 52.30'
NE corner of building SE 79.60'
Project Marker SW 57.05'

PA. 303 OTTAWA COUNTY
FILED 4/20/98
MPJ

B. Description of corner evidence found and/or method applied in restoring or reestablishing corner:

A-9 Found "L" iron in monument box 0.68' West of town line

NW corner of building SE 51.92'
NE corner of building SE 79.15'
Robinson Township corner N 52.82'

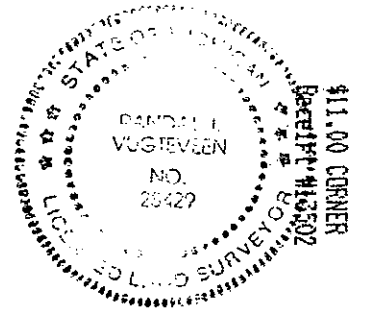
Accepted "L" iron as a careful and faithful perpetuation of the position of the original corner.

3/4" rod & Ottawa County Remon. cap
Set on Township Line at 52.82 feet South at Robinson Township corner.

C. Description of monument for corner and accessories established to perpetuate locating the position of the corner:

3/4" rod & Ottawa County Remon. cap on Township Line at 52.82 feet South at Robinson Township corner.

"L" iron in Mon Box AZ 270° 0.68 feet.
NE Corner Bldg fndn. AZ 123° 78.61 feet.
Nail and Ottawa County Remon Tag in West side T Pole AZ 334° 81.35 feet.
Nail and Ottawa County Remon Tag in Southerly side 24" Spruce AZ 236° 71.31 feet.
Nail and Ottawa County Remon Tag in West Side Guy Pole AZ 3° 76.00 feet.
Cast iron monument at Robinson Township Co: North 52.82 feet.
Centerline "X" M-45 and 96th Avenue 25 North and 5 feet West.



Signed by *Randal J. Vugteveen*
Surveyor's Michigan License No. 28429

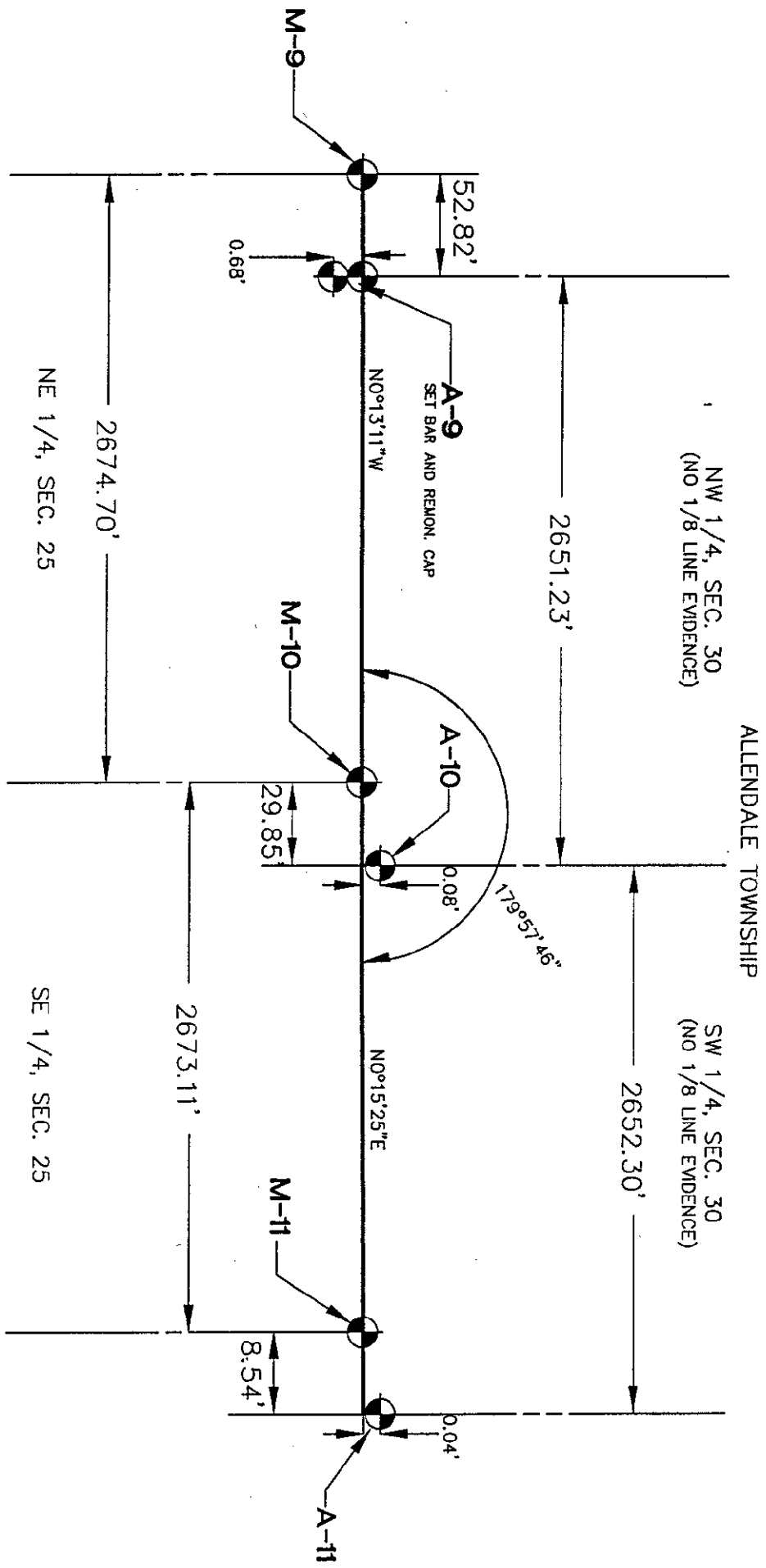
Date July 23, 1998

SURVEY &
REMONUMENTATION

DEC 01 1998

SECTION

A-9
ALLENDALE TOWNSHIP



NO SCALE