

**SURVEY & REMONUMENTATION**

DEC 01 1998

**OTTAWA COUNTY REMONUMENTATION  
LAND CORNER RECORDATION CERTIFICATE  
Filing Requirement of Act 74, Mich. P.A. 1970**

For corners in

OTTAWA

(County)

Located In:

Corner Code #

- |                                       |              |               |  |
|---------------------------------------|--------------|---------------|--|
| 1. Public Land Survey                 | T <u>7</u> N | R <u>14</u> W | A-10 (W 1/4 corner<br>Section 30)<br>Allendale Twp |
|                                       | T            | R             |  |
|                                       | T            | R             |  |
|                                       | T            | R             |  |
| 2. Property Controlling<br>in Section | S            | T             | R  |
|                                       | S            | T             | R  |
| 3. Miscellaneous<br>Property in Sec.  | S            | T             | R  |
|                                       | S            | T             | R  |

**RECORDED**

98 SEP 29 PM 1:57

*Yang*  
REGISTER OF DEEDS  
OTTAWA COUNTY, MI

Register of Deeds Stamp & File Number

4. Lot No. \_\_\_\_\_, Recorded Plat \_\_\_\_\_  
5. Private Claims \_\_\_\_\_

I, Randal J. Vugteveen, in a field survey on April 16, 19 98 do hereby state that under requirements of P.A. 74, Michigan P.A. of 1970, the corner points mentioned in lines 1 and 2 above were in conformance with regulations and rules therefore as required in the current manual of survey instructions of the United States Department of the Interior, Bureau of Land Management or by a decree of a Court of Law and/or that the corner points mentioned in lines 3, 4 and 5 above were in conformance with the rules of the Michigan Board of Land Surveyors or by a Decree of a Court of Law, established, re-established, monumented, recovered, found as expressed below:

**NOTE:** Not more than 2 corners, all in the same town and range, may be recorded on this certificate.

	A	B	C	D	E	F	G	H	I	J	K	L	M
1													
2	6		5		4		3		2		1		
3													
4	7		8		9		10		11		12		
5													
6	18		17		16		15		14		13		
7													
8	19		20		21		22		23		24		
9													
10	30		29		28		27		26		25		
11													
12	31		32		33		34		35		36		
13													

**A. Description of original monument and accessories and/or subsequent restoration:**

A-10 This point was never set by G.L.O.  
Liber 1, Page 671 (October 1972)  
A-10, Found 3/4" steel bar  
Robinson corner N. 29.8'±  
Power Pole E. 28.10'  
Street Sign NE 38.58'  
Telephone Pole W. 272' 33.78'

Liber 2, Page 177 (June 1973)  
A-10 - 1" solid iron  
SW corner garage found S50°E 80.43'  
Power pole S85°E 28.62'  
Telephone pole N30°W 87.68'  
Angle iron N 29.30'

Liber 4, Page 85 (July 1980)  
A-10 Set cast iron monument  
Inscribed "Section corner"  
Power pole East 28.90'  
NW corner garage ESE 70.82'  
Power Pole W. 35.07'  
Robinson Twp. corner N. 49.59'  
(Note: 49.59' apparent typographical error)

**B. Description of corner evidence found and/or method applied in restoring or reestablishing corner:**

A-10 Found cast iron monument in monument box

Corner garage foundation AZ 106° 70.95'  
Nail W. side Power Pole AZ 93° 29.15'  
Nail N. side Telephone Pole AZ 272° 35.0'  
SW corner garage foundation AZ 123° 80.70'  
On centerline tree row to E.  
C.I. monument N. Robinson corner 29.35'

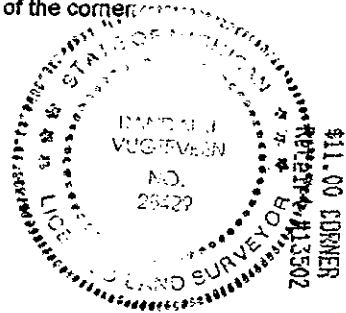
This position not established by original government surveyors. This monument is accepted as the best available evidence of the position of the corner.

PAID BY OTTAWA COUNTY  
4/20/98  
*YDT*

**C. Description of monument for corner and accessories established to perpetuate locating the position of the corner:**

A-10 Cast iron monument in monument box 0.08' E. of town line (Note: All Witnesses to physical monument)

Nail & Ottawa County Remon. tag S. side Power Pole AZ 93° 29.15'  
Nail & Ottawa County Remon. tag S. side Telephone Pole AZ 272° 35.0'  
NE corner of brick house AZ 229° 140.38'  
SW corner garage foundation AZ 123° 80.70'  
C.I. Monument at Robinson corner AZ 0° 29.35'  
Centerline pavement 0'W

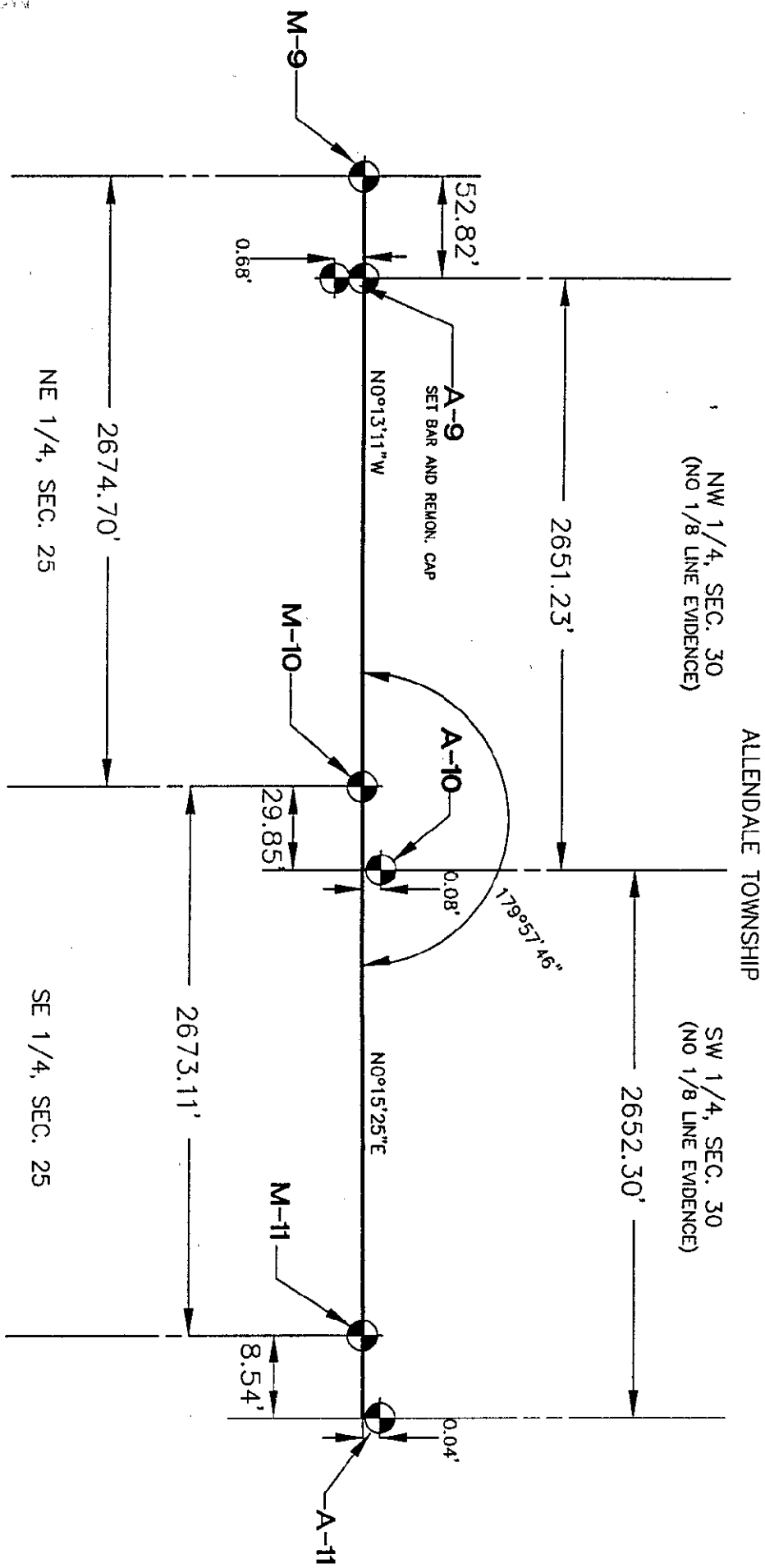


Signed by *Randal J. Vugteveen*  
Surveyor's Michigan License No. 28429

Date July 23, 1998

# A-10

ALLENDALE TOWNSHIP



SURVEY &  
REMONUMENTATION

DEC 01 1998

SECTION



NO SCALE