

DEC 01 1998

OTTAWA COUNTY REMONUMENTATION

SECTION

LAND CORNER RECORDATION CERTIFICATE
Filing Requirement of Act 74, Mich. P.A. 1970

RECORDED

98 SEP 29 PM 1:57

D. J. Vugteveen
REGISTER OF DEEDS
OTTAWA COUNTY, MI

For corners in

OTTAWA

(County)

Located In:

Corner Code #

1. Public Land Survey

T 7N R 14W

A-11 (NW corner

T R

Section 31)

T R

Allendale Twp

T R

2. Property Controlling in Section

S T R

S T R

3. Miscellaneous Property in Sec.

S T R

S T R

Register of Deeds Stamp & File Number

4. Lot No. _____, Recorded Plat _____
5. Private Claims _____

	A	B	C	D	E	F	G	H	I	J	K	L	M
1													
2	6	5	4	3	2	1							
3													
4	7	8	9	10	11	12							
5													
6	18	17	16	15	14	13							
7													
8	19	20	21	22	23	24							
9													
10	30	29	28	27	26	25							
11													
12	31	32	33	34	35	36							
13													

I, Randal J. Vugteveen, in a field survey on April 16, 1998 do hereby state that under requirements of P.A. 74, Michigan P.A. of 1970, the corner points mentioned in lines 1 and 2 above were in conformance with regulations and rules therefore as required in the current manual of survey instructions of the United States Department of the Interior, Bureau of Land Management or by a decree of a Court of Law and/or that the corner points mentioned in lines 3, 4 and 5 above were in conformance with the rules of the Michigan Board of Land Surveyors or by a Decree of a Court of Law; established, re-established, monumented, recovered, found as expressed below:

NOTE: Not more than 2 corners, all in the same town and range, may be recorded on this certificate.

A. Description of original monument and accessories and/or subsequent restoration:

A-11 G.L.O set May, 1832, Noah Brookfield, [8" W. Ash N67°E 43 links, 18" Maple S53°E 35 links, Post 13 links North]

Liber 1, Page 671 (October 1972)

A-11 Found iron pipe

18" Ash NW 37.48'

St. sign SE 39.52'

24" Maple NE 79.47'

20" Maple SE 76.24'

Centerline bridge S 110'±

Liber 3, Page 312 (November 1978)

Set capped "T" iron 8' South of centerline "X"

North 0°E - Rail road spk. at SE corner, Section 25,

T7N, R14W - 8.58'

South 78°E - Nail in N. side telephone pole - 75.58'

South 14°E - NE corner concrete bridge deck - 81.9'

South 26°W - NW corner concrete bridge deck - 81.9'

South 83°W - Nail in N. side twin 10" Maple - 62.92'

Liber 4, Page 85 (July 1980)

A-11 Set cast iron monument

Inscribed "Section corner"

Power Pole ESE 75.20'

NE corner bridge SSE 82.00'

NW corner bridge SSW 81.99'

Street sign SW 36.40'

Twin 11" Maple WSW 62.65'

Robinson Twp corner North 8.54'

B. Description of corner evidence found and/or method applied in restoring or reestablishing corner:

A-11 Found cast iron monument in monument box

Power Pole AZ 102° 75.63'

NE corner concrete bridge deck AZ 165° 81.97'

NW corner concrete bridge deck AZ 195° 81.95'

Centerline street sign AZ 240° 36.5'

concrete iron monument North (Robinson corner)

8.54'

Accepted cast iron monument as a careful and faithful perpetuation of the position of the original corner.

RECORDED 4/20/98

MDJ

C. Description of monument for corner and accessories established to perpetuate locating the position of the corner:

A-11 Cast iron monument in monument box 0.04" East of town line (Witnesses are to physical monument)

Nail & Ottawa County Remon. tag NE side 14" Ash AZ 313°79.58'

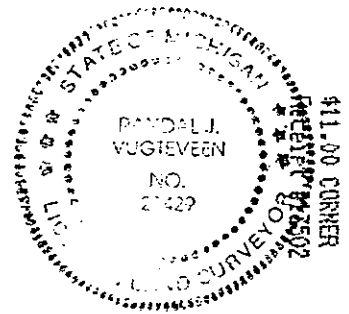
Nail & Ottawa County Remon. tag N side Power Pole AZ 102° 75.63'

NE corner concrete bridge deck AZ 165° 81.97'

NW corner concrete bridge deck AZ 195° 81.95'

Cast iron monument N. 8.54' Robinson corner

Centerline "X" of 96th and Pierce North 8' & West 0'



Signed by *Randal J. Vugteveen*
Surveyor's Michigan License No. 28429

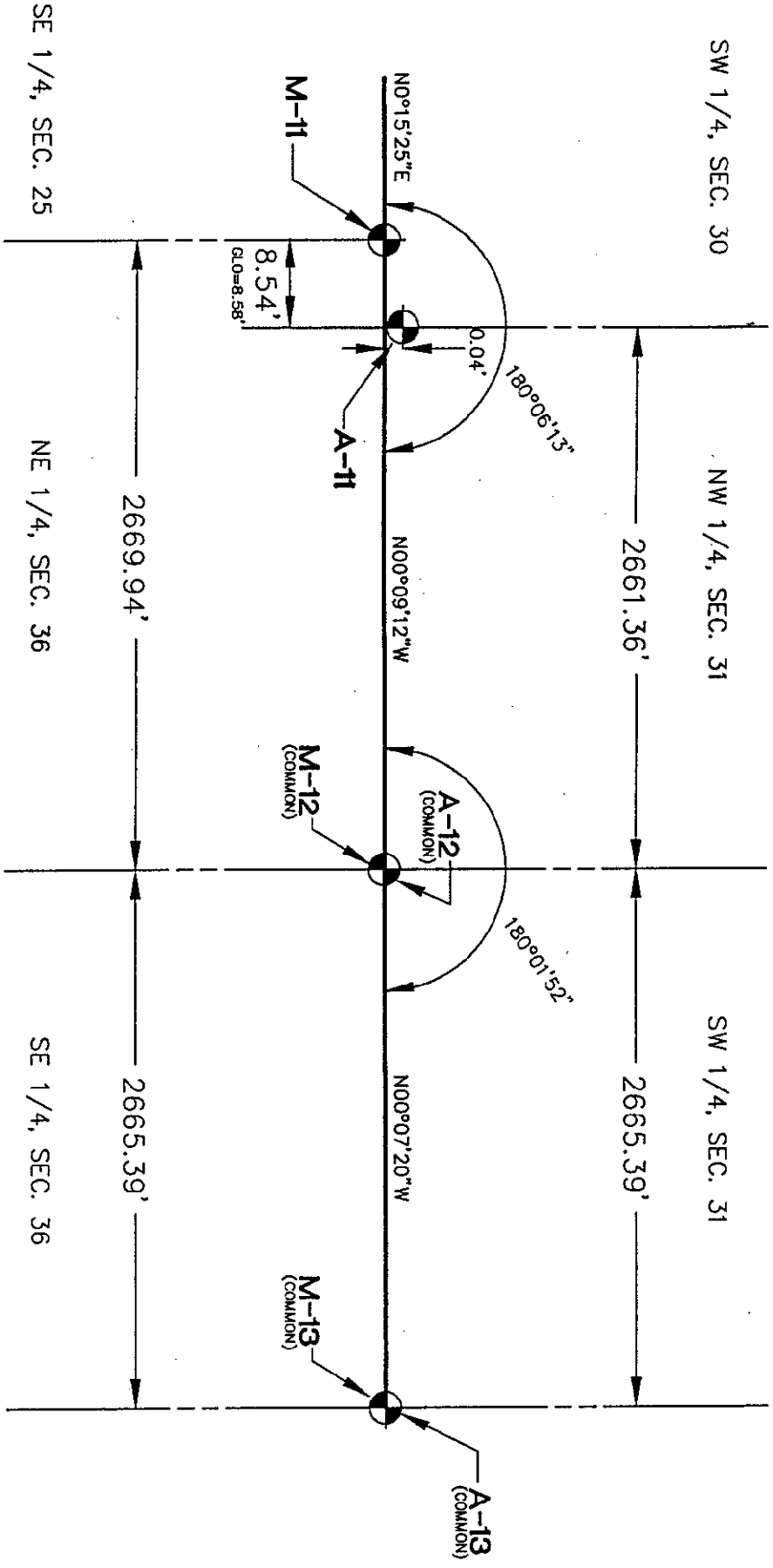
Date July 23, 1998

SURVEY &
REMONUMENTATION

DEC 01 1998

SECTION

A-11
ALLEDALE TOWNSHIP



NO SCALE