

DEC 01 1998

SECTION

OTTAWA COUNTY REMONUMENTATION

LAND CORNER RECORDATION CERTIFICATE
Filing Requirement of Act 74, Mich. P.A. 1970

For corners in

OTTAWA

(County)

Located In:

Corner Code #

1. Public Land Survey

T 7N R 14W A-12 (W 1/4 corner of
Section 31)
T ___ R ___
T ___ R ___
T 7N R 15W Allendale Twp
M-12

2. Property Controlling in Section

S ___ T ___ R ___
S ___ T ___ R ___

3. Miscellaneous Property in Sec.

S ___ T ___ R ___
S ___ T ___ R ___

Common corner to M-12 7-15

RECORDED
98 SEP 29 PM 1:57

Randy J. Vugteveen
REGISTER OF DEEDS
OTTAWA COUNTY, MI

Register of Deeds Stamp & File Number

4. Lot No. _____, Recorded Plat _____
5. Private Claims _____

I, Jeffrey C. Baker, in a field survey on April 15, 1998 do hereby state that under requirements of P.A. 74, Michigan P.A. of 1970, the corner points mentioned in lines 1 and 2 above were in conformance with regulations and rules therefore as required in the current manual of survey instructions of the United States Department of the Interior, Bureau of Land Management or by a decree of a Court of Law and /or that the corner points mentioned in lines 3, 4 and 5 above were in conformance with the rules of the Michigan Board of Land Surveyors or by a Decree of a Court of Law, established, re-established, monumented, recovered, found as expressed below:

NOTE: Not more than 2 corners, all in the same town and range, may be recorded on this certificate.

| | A | B | C | D | E | F | G | H | I | J | K | L | M |
|----|---|----|---|----|---|----|---|----|---|----|---|----|---|
| 1 | | | | | | | | | | | | | |
| 2 | | 6 | | 5 | | 4 | | 3 | | 2 | | 1 | |
| 3 | | | | | | | | | | | | | |
| 4 | | 7 | | 8 | | 9 | | 10 | | 11 | | 12 | |
| 5 | | | | | | | | | | | | | |
| 6 | | 18 | | 17 | | 16 | | 15 | | 14 | | 13 | |
| 7 | | | | | | | | | | | | | |
| 8 | | 19 | | 20 | | 21 | | 22 | | 23 | | 24 | |
| 9 | | | | | | | | | | | | | |
| 10 | | 30 | | 29 | | 28 | | 27 | | 26 | | 25 | |
| 11 | | | | | | | | | | | | | |
| 12 | | 31 | | 32 | | 33 | | 34 | | 35 | | 36 | |
| 13 | | | | | | | | | | | | | |

A. Description of original monument and accessories and/or subsequent restoration:
A-12 This point was never set by G.L.O.

Liber 4, Page 154, 1980
Found 1/4" iron pipe from recorded ties
Set cast iron monument
Power Pole ENE 73.45'
Telephone Ped. West 30.78'
SE corner house NW 85.92
NE corner house SW 87.87'

B. Description of corner evidence found and/or method applied in restoring or reestablishing corner:

A-12 found cast iron monument in monument box

Nail & tag N. side power pole AZ 77° 73.84'
PK nail in S. side telephone pedestal post AZ 270° 31.15'
SE corner house AZ 294° 85.88'
NE corner house AZ 238° 88.05'

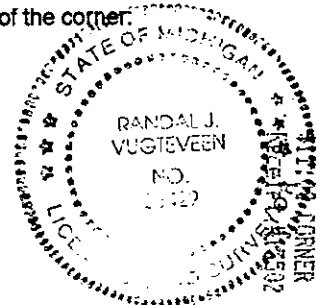
As per Liber 4, Page 81 M-12 Robinson corner is common with A-12 Allendale, center of tree row to East.
This position was not established by original government surveyors. This monument is accepted as the best available evidence of the position of the corner.

Randy J. Vugteveen 4/20/98

C. Description of monument for corner and accessories established to perpetuate locating the position of the corner:

A-12 cast iron monument in monument box

Nail & Ottawa County Remon. tag in N side Power Pole AZ 92° 78.29'
Nail & Ottawa County Remon. tag in NE side Power Pole AZ 137° 92.65'
SE corner house foundation AZ 227° 115.98'
SE corner brick house corner AZ 294° 85.88'
Center of hydrant AZ 20° 128.91'
Centerline of pavement West 2.5'



Signed by *Randal J. Vugteveen*
Surveyor's Michigan License No. 28429

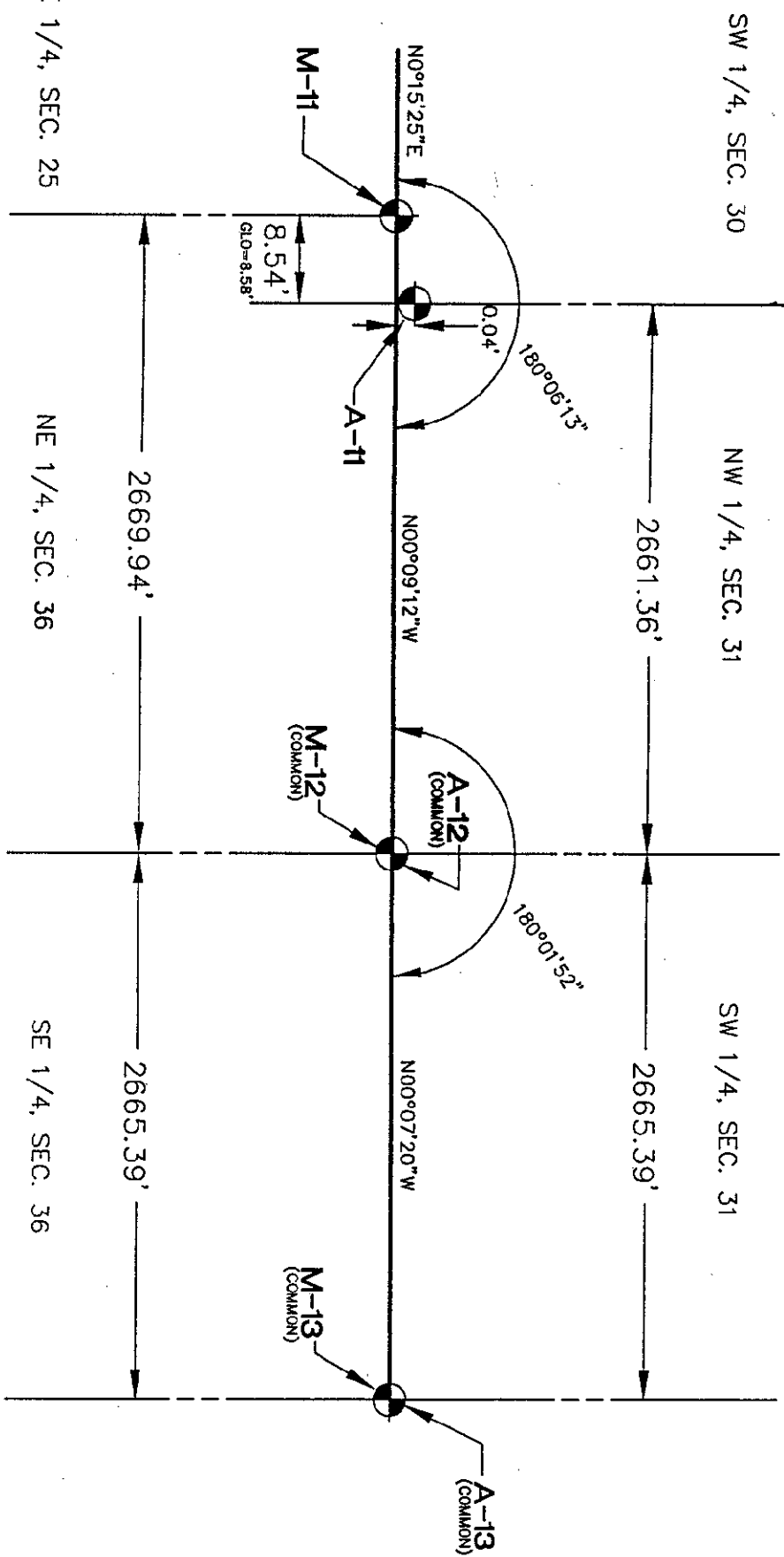
Date July 23, 1998

SURVEY &
REMONUMENTATION

DEC 01 1998

SECTION

A-12
ALLEDALE TOWNSHIP



NO SCALE

