

SURVEY & REMONUMENTATION

APR 24 1995

Ottawa County Remonumentation

RECORDED

COMMISSION

LAND CORNER RECORDATION CERTIFICATE
Filing Requirement of Act 74, Mich. P.A. 1970

94 DEC 15 AM 11:50

Regina Holman
REGISTER OF DEEDS
OTTAWA COUNTY, MI

For corners in

<u>Ottawa</u> (County)	Located In:	Corner Code #
1. Public Land Survey	T <u>7N</u> R <u>14W</u>	<u>C-11</u>
	T _____ R _____	_____
	T _____ R _____	_____
	T _____ R _____	_____
2. Property Controlling in Section	S _____ T _____ R _____	_____
	S _____ T _____ R _____	_____
3. Miscellaneous Property in Sec.	S _____ T _____ R _____	_____
	S _____ T _____ R _____	_____

Register of Deeds Stamp & File Number

4. Lot No. _____, Recorded Plat _____
5. Private Claims _____

	A	B	C	D	E	F	G	H	I	J	K	L	M
2	6		5		4		3		2		1		
3													
4	7		8		9		10		11		12		
5													
6	13		17		16		15		14		13		
7													
8	19		20		21		22		23		24		
9													
10	30		29		28		27		26		25		
11													
12	31		32		33		34		35		36		
13													

Maurice J.
Rosema

Jan. 2 94

I, _____, in a field survey on _____, 19 _____, do hereby certify that under requirements of P.A. 74, Michigan P.A. of 1970, the corner points mentioned in lines 1 and 2 above were in conformance with regulations and rules therefore as required in the current manual of survey instructions of the United States Department of the Interior, Bureau of Land Management or by a decree of a Court of Law and/or that the corner points mentioned in lines 3, 4 and 5 above were in conformance with the rules of the Michigan Board of Land Surveyors or by a Decree of a Court of Law; established, re-established, monumented, re-monumented, recovered, found as expressed below:

NOTE: Not more than 4 corners, all in the same town and range, may be recorded on this certificate.

A. Description of original monument and accessories and/or subsequent restoration:

C-11
GLO - 1832 signed by Joiner - 1981 per L.C.R.C. rec. in
Noah Brookfield for L. 4, P. 164
Calvin Britain D.S. C.I. mon.
10" Maple at Sec. cor. Power pole - NE. 88.33'
15" Pine - NNE. 57.00'
Stump - SW. 20.66'
Street sign - SSE. 20.45'

B. Description of corner evidence found and/or method applied in restoring or reestablishing corner:

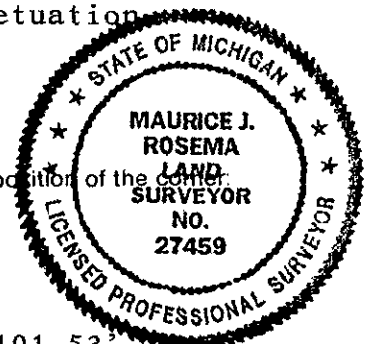
C-11
Found C.I. mon. 0.5' below grade
Street sign post - S16 E 20.57'
Found nail in SE. side Power pole - N38° E 88.38'

P.A. 345 OTTAWA COUNTY
PEER APPROVED 4/18/94
Murray D. Newell

I hereby accept this corner as a correct and accurate perpetuation of the position of the original corner.

C. Description of monument for corner and accessories established to perpetuate locating the position of the corner:

C-11
C.I. mon.
Set nail and remon. tag in W. side 15" Pine - N14° E 83.42'
Set nail and remon. tag in NW. side 17" tw. Maple - N77° E 101.53'
Set nail and remon. tag in SE. side Power pole - N38° E 88.38'
Street sign post - N48° W 55.58'
On centerline of E.-W. gravel road
Centerline of gravel road to N. - W. 3'



Signed by *Maurice J. Rosema* Date April 18, 1994
Surveyor's Michigan License No. 27459