

FEB 24 2000

SECTION

Ottawa County Remonumentation  
LAND CORNER RECORDATION CERTIFICATE  
Filing Requirement of Act 74, Mich. P.A. 1970

RECORDED

99 OCT 27 PM 1:50

For corners in

Ottawa

(County)

Located In:

Corner Code #

1. Public Land Survey

T 7N R 14W

E-12

T R

West 1/4 corner of Section 33

T R

Allendale Township

T R

2. Property Controlling  
in Section

S T R

S T R

3. Miscellaneous  
Property in Sec.

S T R

S T R

*Sam Phillips*  
REGISTER OF DEEDS  
OTTAWA COUNTY, MI

Register of Deeds Stamp & File Number

4. Lot No. \_\_\_\_\_, Recorded Plat \_\_\_\_\_  
5. Private Claims \_\_\_\_\_

I, Maurice J. Rosema, in a field survey on August 30, 19 99, do hereby state that under requirements of P.A. 74, Michigan P.A. of 1970, the corner points mentioned in lines 1 and 2 above were in conformance with regulations and rules therefore as required in the current manual of survey instructions of the United States Department of the Interior, Bureau of Land Management or by a decree of a Court of Law and/or that the corner points mentioned in lines 3, 4 and 5 above were in conformance with the rules of the Michigan Board of Land Surveyors or by a Decree of a Court of Law; established, re-established, monumented, recovered, found as expressed below:

NOTE: Not more than 2 corners, all in the same town and range, may be recorded on this certificate.

	A	B	C	D	E	F	G	H	I	J	K	L	M
1													
2	6		5		4		3		2		1		
3													
4	7		8		9		10		11		12		
5													
6	18		17		16		15		14		13		
7													
8	19		20		21		22		23		24		
9													
10	30		29		28		27		26		25		
11													
12	31		32		33		34		35		36		
13													

A. Description of original monument and accessories and/or subsequent restoration:

E-12

GLO - 1832

Noah Brookfield

for Calvin Britain D.S.

Set post

20" Sugar -

S62°E 48 links

20" Sugar -

N52°W 36 links

LCRC per Liber 3, Page 332

(Nederveld - 1978)

Set "L" iron at the intersection of the N-S and

E-W fence lines

PK in S side 16" Oak - W 9.40'

PK in E side 14" W Cherry - NW. 19.81

PK in N side 34" Oak - W 54.58'

LCRC per Liber 6, Page 57 (Joiner - 1980) over

LCRC per Liber 4, Page 148

(Roon - 1980)

Set 1/2" pipe 1/2 way and on line between  
NW and SW Section corners per previous  
1903 survey

12" Oak - S80°W 10.33'

34" Oak - N80°W 31.40'

16" Oak - S50°E 22.16'

Iron prev. rec. as E-12 - N84°E 24.92'

Fence corner - E 25'

B. Description of corner evidence found and/or method applied in restoring or reestablishing corner:

A-5

Found capped "Roon" rerod, replaced with 3/4" X 3' steel rod with remonumentation cap

Found Cast iron monument - E 23.97'

Corner fence post (fence to N and W) - E 25'

The LCRC recorded by Roon in 1980 is held as the correct location based on testimony by adjacent land owners and a 1978 Glaza survey in the SE 1/4 of Section 32, T7N, R14W.

I hereby accept this corner as a correct and accurate perpetuation of the position of the original corner.

C. Description of monument for corner and accessories established to perpetuate locating the position of the corner:

A-5

3/4" X 3' steel rod with remonumentation cap

Cast Iron monument - East 23.97'

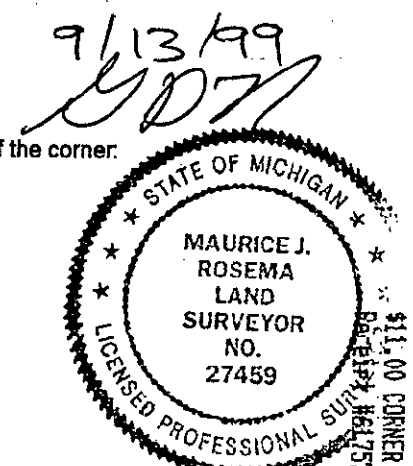
Set nail and remonumentation tag in N. side 15" Oak - S80°E 14.32'

Set nail and remonumentation tag in SW side 24" Oak - S45°W 21.68'

Set nail and remonumentation tag in N. side of 15" Oak - S71°W 9.90'

Set nail and remonumentation tag in SE side 12" Maple - N43°E 15.86'

On W edge of dirt N-S dirt lane



Signed by Maurice J. Rosema  
Surveyor's Michigan License No. 27459

Date August 30, 1999

LCRC per Liber 6, Page 57

(Joiner - 1990)

Set CIM

Nail in S side 12" Birch - ENE 4.74'

Nail in S side 14" Oak - W 9.50'

Nail in E side 20" Oak - SW 15.44'

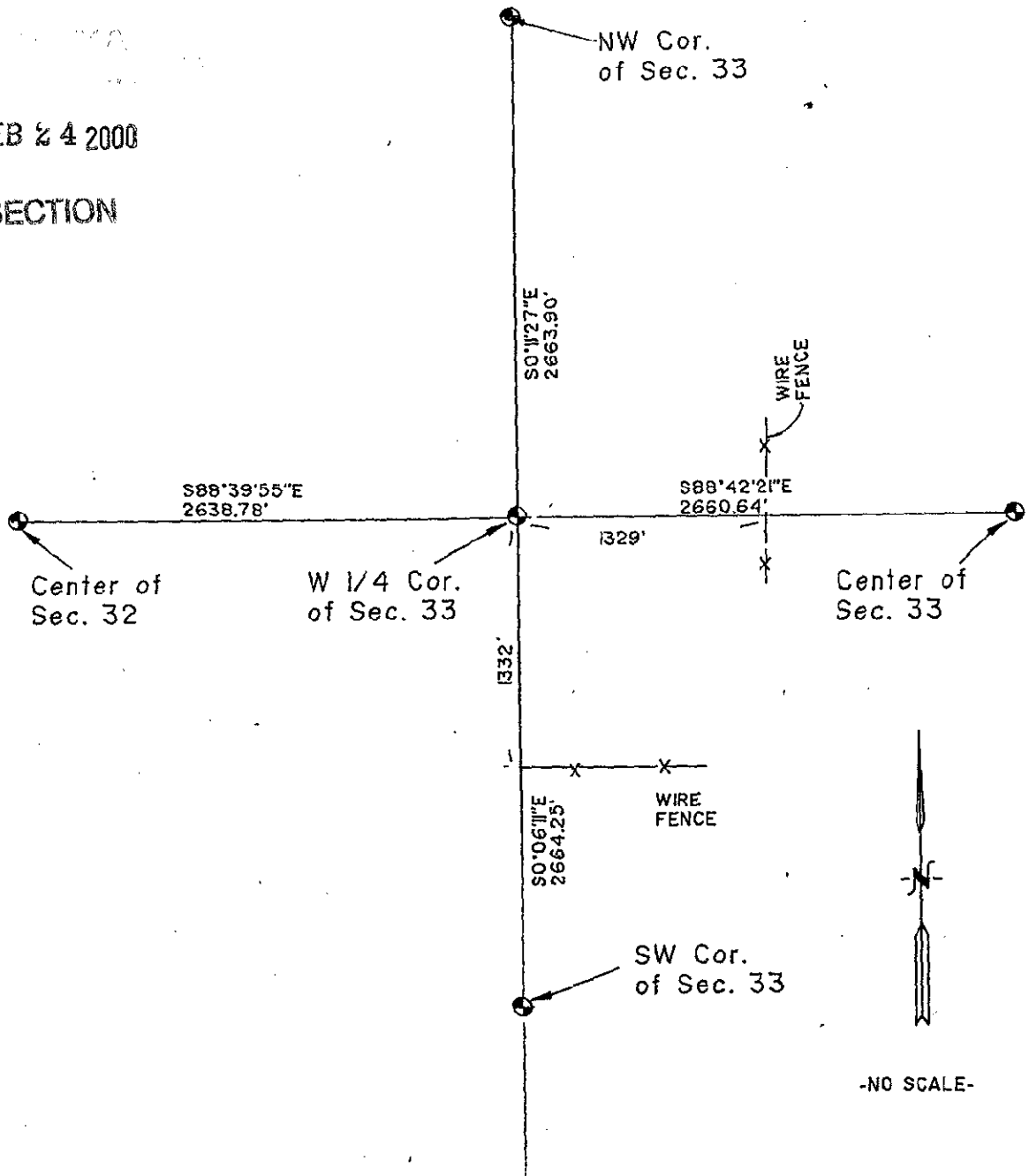
Nail in E side twin 10" Oak - SE 16.15'

Capped Iron No. 13593 - W 23.96'

1/2" rerod - WNW 24.76'

FEB 24 2000

SECTION



02/24/00 1:15  
02/24/00 1:15  
02/24/00 1:15