

**SURVEY &
DOCUMENTATION**

APR 05 1996

COMMISSION

Ottawa County Remonumentation
LAND CORNER RECORDATION CERTIFICATE
Filing Requirement of Act 74, Mich. P.A. 1970

RECORDED

95 DEC 12 PM 4: 52

Phyllis Kallman
REGISTER OF DEEDS
OTTAWA COUNTY, MI

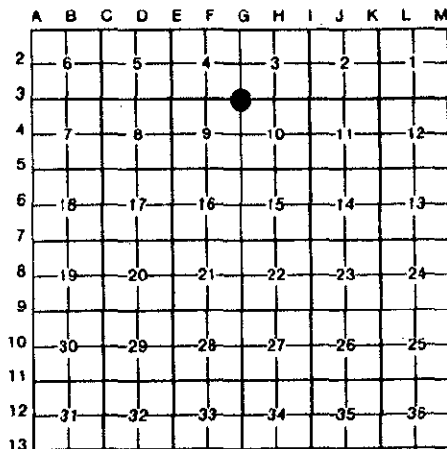
For corners in

| Ottawa (County) | Located In: | Corner Code # |
|------------------------------------|----------------------------|---------------|
| 1. Public Land Survey | T <u>T7N</u> R <u>R14W</u> | G-3 |
| | T _____ R _____ | _____ |
| | T _____ R _____ | _____ |
| | T _____ R _____ | _____ |
| 2. Property Controlling in Section | S _____ T _____ R _____ | _____ |
| | S _____ T _____ R _____ | _____ |
| 3. Miscellaneous Property in Sec. | S _____ T _____ R _____ | _____ |
| | S _____ T _____ R _____ | _____ |

Register of Deeds Stamp & File Number

4. Lot No. _____, Recorded Plat _____
5. Private Claims _____

Maurice J. Rosema, in a field survey on Sept. 6, 19 95, do hereby certify that under requirements of P.A. 74, Michigan P.A. of 1970, the corner points mentioned in lines 1 and 2 above were in conformance with regulations and rules therefore as required in the current manual of survey instructions of the United States Department of the Interior, Bureau of Land Management or by a decree of a Court of Law and/or that the corner points mentioned in lines 3, 4 and 5 above were in conformance with the rules of the Michigan Board of Land Surveyors or by a Decree of a Court of Law; established, re-established, monumented, re-monumented, recovered, found as expressed below:



NOTE: Not more than 4 corners, all in the same town and range, may be recorded on this certificate.

A. Description of original monument and accessories and/or subsequent restoration:

| | |
|-------------------------------|--|
| G-3 | L.C.R.C. recorded in Liber 1, |
| GLO - 1832 by Noah Brookfield | Page 181 - December 16, 1971 |
| for Calvin Britain D.S. | C.I. mon. |
| Set post | RR Spk in centerline of Leonard St. N 231.0' |
| 20" Beech S50°W 25 lks. | P pole ENE 156.40' |
| | SW house cor. ESE 190.30' |

B. Description of corner evidence found and/or method applied in restoring or reestablishing corner:

| | |
|--------------------------------------|---------------|
| Found C.I. mon. on N-S lawn division | |
| Found nail in W side P pole | N82°E 156.54' |
| SW cor. house (cor. of brick) | S85°E 190.24' |
| Centerline of Leonard St. bit. conc. | N 231' |

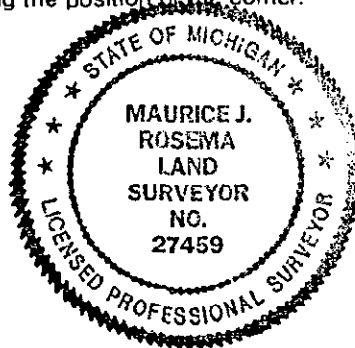
P.A. 345 OTTAWA COUNTY
PEER APPROVED 12/11/95

Kudoy D. Adewale
LDN

I hereby accept this corner as a correct and accurate perpetuation of the position of the original corner.

C. Description of monument for corner and accessories established to perpetuate locating the position of the corner:

| | |
|--------------------------------|--------------|
| G-3 | |
| C.I. mon. | |
| SW cor. house fndn. | N45°E 44.18' |
| NW cor. house (cor. of siding) | N27°E 70.85' |
| NE cor. house fndn (gar. cor.) | N40°W 68.22' |
| SE cor. house fndn. | N90°W 56.02' |



Signed by *Maurice J. Rosema* Date NOV. 20, 1995
Surveyor's Michigan License No. 27459

FORM APPROVED BY MICHIGAN STATE BOARD OF LAND SURVEYORS, JAN. 28, 1971
REVISED MAY 14, 1975
REVISED JAN., 1983