

FEB 24 2000

Ottawa County Remonumentation
LAND CORNER RECORDATION CERTIFICATE
Filing Requirement of Act 74, Mich. P.A. 1970

RECORDED

99 OCT 27 PM 1:50

For corners in SECTION

Ottawa

(County)

Located In:

Corner Code #

1. Public Land Survey

T 7NR 14W

H-7

T ___ R ___

N¼ corner, Section 22

T ___ R ___

Allendale Township

T ___ R ___

2. Property Controlling in Section

S ___ T ___ R ___

S ___ T ___ R ___

3. Miscellaneous Property in Sec.

S ___ T ___ R ___

S ___ T ___ R ___

Sam Schell
REGISTER OF DEEDS
OTTAWA COUNTY, MI

Register of Deeds Stamp & File Number

4. Lot No. _____, Recorded Plat _____

5. Private Claims _____

I, Maurice J. Rosema, in a field survey on July 28, 1999 do hereby state that under requirements of P.A. 74, Michigan P.A. of 1970, the corner points mentioned in lines 1 and 2 above were in conformance with regulations and rules therefore as required in the current manual of survey instructions of the United States Department of the Interior, Bureau of Land Management or by a decree of a Court of Law and /or that the corner points mentioned in lines 3, 4 and 5 above were in conformance with the rules of the Michigan Board of Land Surveyors or by a Decree of a Court of Law established, re-established, monumented, recovered, found as expressed below:

NOTE: Not more than 2 corners, all in the same town and range, may be recorded on this certificate.

	A	B	C	D	E	F	G	H	I	J	K	L	M
1													
2		6		5		4		3		2		1	
3													
4		7		8		9		10		11		12	
5													
6		10		17		16		15		14		13	
7								●					
8		19		20		21		22		23		24	
9													
10		30		29		28		27		26		25	
11													
12		31		32		33		34		35		36	
13													

A. Description of original monument and accessories and/or subsequent restoration:

H-7
GLO - 1832 LCRC per Liber 4, Page 330
Britain D.S. (Joiner - 1982)
10" Beech is the (over)
corner

LCRC per Liber 2, Page 531
(Spicer 1974)
(over)

LCRC per Liber 1, Page 511
(Roon - 1972)
(over)

LCRC per Liber 6, Page 180
(Joiner 1991)
(over)

B. Description of corner evidence found and/or method applied in restoring or reestablishing corner:

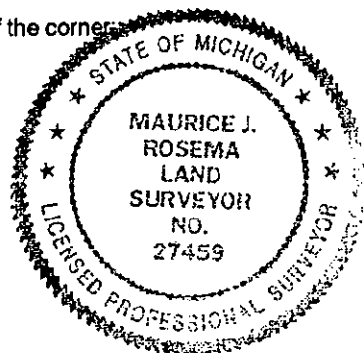
H-7
Found Cast iron monument (top broken) in mon. box
Found capped Exxel re-rod - SE. 0.11' (removed re-rod)
SE. brick house corner - N75°E 115.44'
NW. brick house corner - N55°E 145.42'
Found nail in N. side tw. 12" Oak - N88°W 62.71'

9/13/99
YDN

I hereby accept this corner as a correct and accurate perpetuation of the position of the original corner.

C. Description of monument for corner and accessories established to perpetuate locating the position of the corner:

H-7
Cast iron monument in mon. box
Set nail and remonumentation tag in NW. side tw. 15" Ash - N42°E 82.86'
Set nail and remonumentation tag in N. side tw. 12" Oak - N88°W 62.71'
Set nail and remonumentation tag in E. side Power pole - N15°W 139.50'
NW. brick house corner - N55°E 145.42'
SW. brick house corner - N75°E 115.44'
Centerline of N.-S. bit. conc. road - W. 0.5'



\$11.00 CORNER
Receipt #61757

Signed by *Maurice J. Rosema*
Surveyor's Michigan License No. 27459

Date August 30, 1999

FEB 24 2000

SECTION

LCRC per Liber 1, Page 511
(Roon - 1972)

Iron stake

Nail in face of Tele. pole - E. 51.75'

Nail in face of 12" Sycamore - W. 55.90'

Nail in face of Power pole - NNW. 139.15'

LCRC per Liber 2, Page 531
(Spicer - 1974)

1" solid iron

MBT pole - S90°E 52.15'

NW. cor. brick gar. - N55°E 145.45'

CP pole - N15°W 139.77'

12" Sycamore - N85°W 56.00'

LCRC per Liber 4, Page 330
(Merdzinski - 1982)

1" iron in mon. box

Nail in N. side 12" Oak - W. 62.74'

Nail in face of CP pole - N15°W 139'

NW. cor. brick gar. - N55°E 145.4'

SW. cor. brick hse. - N80°E 115.3'

In c/l road running N-S and on tree row W and shrubrow E

LCRC per Liber 6, Page 180
(Joiner - 1991)

Set C.I.M.

NW. cor. brick gar. - NE. 145.47'

SW. cor. brick hse. - ENE. 115.37'

Nail in N. side 12" Oak - W. 62.69'

Power pole - NW. 139.63'