

FEB 24 2000

Ottawa County Remonumentation
LAND CORNER RECORDATION CERTIFICATE
Filing Requirement of Act 74, Mich. P.A. 1970

RECORDED

99 OCT 27 PM 1:50

Gary Schubert
REGISTER OF DEEDS
OTTAWA COUNTY, MI

SECTION

For corners in

Ottawa
(County)

Located In:

Corner Code #

1. Public Land Survey

T7N R14W
T___ R___
T___ R___
T___ R___

J-3
N 1/4 corner Section 11
Polkton Township

2. Property Controlling in Section

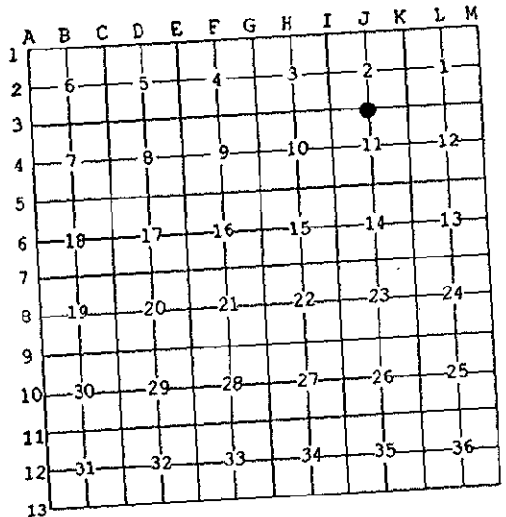
S___ T___ R___
S___ T___ R___
S___ T___ R___
S___ T___ R___

3. Miscellaneous Property in Sec.

4. Lot No. _____, Recorded Plat _____
5. Private Claims _____

Register of Deeds Stamp & File Number

Maurice J. Rosema in a field survey on Oct. 15, 1999 do hereby state that under requirements of P.A. 74, Michigan P.A. of 1970, the corner points mentioned in lines 1 and 2 above were in conformance with regulations and rules therefore as required in the current manual of survey instructions of the United States Department of the Interior, Bureau of Land Management or by a decree of a Court of Law and /or that the corner points mentioned in lines 3, 4 and 5 above were in conformance with the rules of the Michigan Board of Land Surveyors or by a Decree of a Court of Law, established, re-established, monumented, recovered, found as expressed below:



NOTE: Not more than 2 corners, all in the same town and range, may be recorded on this certificate.

A. Description of original monument and accessories and/or subsequent restoration:

J-3
GLO - 1837
J. Mullett D.S.
Set post
11" Beech - N1°W
8 links
30" Elm - S16°E
10 links
Information from the files of Joiner Engineering
1" pipe
Centerline of Leonard Street - N 146.9'
30" Ash - SW 5.29'
Nail in thorn clump - NW 11.05'
6" Ash - NE 17.66'

Witnesses from recorded survey map by
by Tru-Line Surveying, Liber 9, Page 29;
(1999) 3/4" pipe
Nail in SE side 24" Ash - - SSW 6.48'
Nail in E side thorn clump - NNW 11.81'
Nail in N side 6" Ash - ESE 41.16'
Nail in N side 6" Ash - ENE 45.25'
c/I N-S 18" G. road - W 26'
PK/tag at c/I Leonard St - N 146.90'

B. Description of corner evidence found and/or method applied in restoring or reestablishing corner:

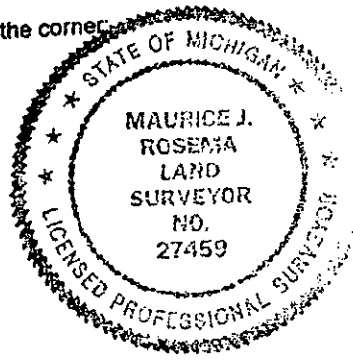
J-3
Found 1" iron pipe, replaced with 3/4" x 3" steel rod with remon. cap
Found nail in E side 6" Thornapple clump - NNW 11.77'
Center of 30" Ash - SSW 6.5'
Centerline of N-S gravel road - W 26'
Centerline of Leonard Street - N 147±

10/18/99
YDN

I hereby accept this corner as a correct and accurate perpetuation of the position of the original corner.

C. Description of monument for corner and accessories established to perpetuate locating the position of the corner:

J-3
3/4" x 3" steel rod with remonumentation cap
Set nail and remonumentation tag in W side 30" Ash - S35°W 6.87'
Set nail and remonumentation tag in E side 6" Thornapple clump - N8°W 11.77'
Set nail and remonumentation tag in N side 6" Ash - S50°E 45.92'
Set nail and remonumentation tag in S side 20" Ash - S68°W 59.74'
Set nail and remonumentation tag in S side 12" Maple - N65°W 49.53'
Centerline of N-S gravel road - W 26'



\$9.00 CORNER
Receipt #61757

Signed by *Maurice J. Rosema*
Surveyor's Michigan License No. 27459

Date October 16, 1999