

**SURVEY &
REMONUMENTATION**

FEB 27 1998

**OTTAWA COUNTY REMONUMENTATION
LAND CORNER RECORDATION CERTIFICATE
Filing Requirement of Act 74, Mich. P.A. 1970**

For corners in **SECTION**

Ottawa Located In: Corner Code #
(County) Robinson Township

1. Public Land Survey T 7N R 15W A-4
T ___ R ___ West 1/4
T ___ R ___ corner
T ___ R ___ Section 7

2. Property Controlling S ___ T ___ R ___
in Section S ___ T ___ R ___

3. Miscellaneous S ___ T ___ R ___
Property in Sec. S ___ T ___ R ___

4. Lot No. _____, Recorded Plat _____
5. Private Claims _____

I, Carl P. Englert, in a field survey on 11/26, 19 97 do hereby state that under requirements of P.A. 74, Michigan P.A. of 1970, the corner points mentioned in lines 1 and 2 above were in conformance with regulations and rules therefore as required in the current manual of survey instructions of the United States Department of the Interior, Bureau of Land Management or by a decree of a Court of Law and/or that the corner points mentioned in lines 3, 4 and 5 above were in conformance with the rules of the Michigan Board of Land Surveyors or by a Decree of a Court of Law; established, re-established, monumented, recovered, found as expressed below.

NOTE: Not more than 2 corners, all in the same town and range, may be recorded on this certificate.

A. Description of original monument and accessories and/or subsequent restoration:

A-4 W 1/4 corner Section 7
G.L.O. corner Not Set LCRC Liber 2, Page 107 LCRC Liber 3, Page 380
4/12/73 Found 1" Pipe
1" pipe Set Cast Iron Mon.
NE 60.64 T. Pole Tele. Pole NE 60.64'
ESE 59.45' 36" Oak 36" Oak ESE 59.21'
NNW 63.25' 16" Oak 12" Oak NE 39.38'
S.; 7.5' G.H. Corner Grand Haven Corner
South 7.50'

See Other Side

B. Description of corner evidence found and/or method applied in restoring or reestablishing corner:

A-4 W 1/4 corner Section 7
Found 4" Harrison Cast Iron Monument in Mon. Box 4" deep on centerline of 144th Avenue
Found T7N, R16W corner South 7.48'
Found 36" Oak ESE 59.21'

PA. 345 OTTAWA COUNTY

PEER APPROVED 62-1-97

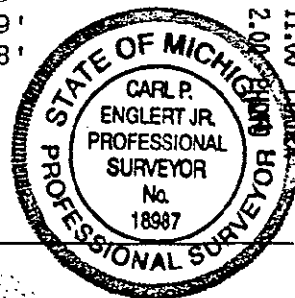
This position not established by original government surveyors.
This monument is accepted as the best available evidence of the position of the corner.

C. Description of monument for corner and accessories established to perpetuate locating the position of the corner:

A-4 W 1/4 corner Section 7
4" Harrison Cast Iron Monument in Mon. Box
O.C. Remon Tag & Nail in N Side 40" Oak S80°E 58.86'
O.C. Remon Tag & Nail in S Side 12" Triple Oak N41°E 74.49'
O.C. Remon Tag & Nail in NE Side 17" Oak N38°W 69.39'
O.C. Remon Tag & Nail in NW Side 18" Oak S37°W 58.38'
T7N, R16W corner South 7.48'

Signed by Carl P. Englert
Surveyor's Michigan License No. 18987

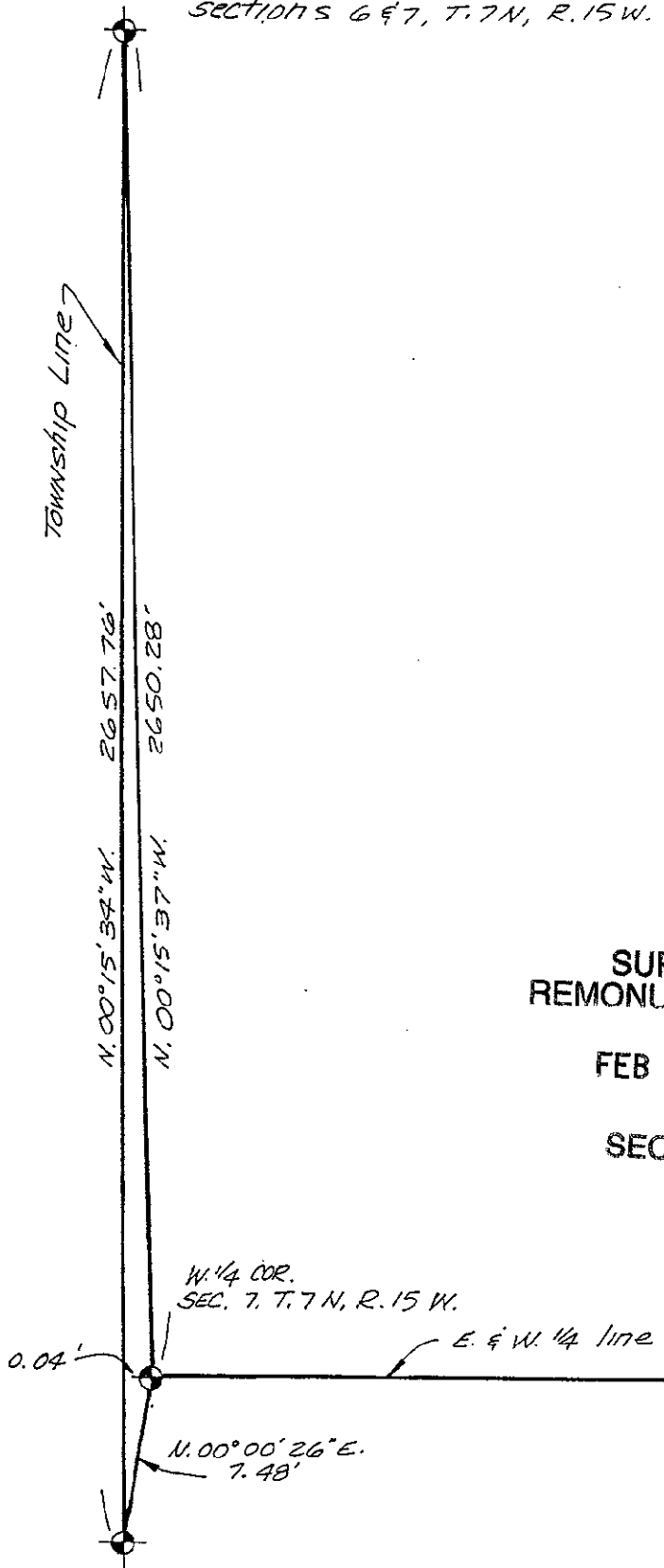
Date 12/1/1997



RECORDED
97 DEC -8 AM 11:32
Jan. [Signature]
REGISTER OF DEEDS
OTTAWA COUNTY, MI
Register of Deeds Stamp & File Number

1	A	B	C	D	E	F	G	H	I	J	K	L	M
2		6		5		4		3		2		1	
3													
4	7		8		9		10		11		12		
5													
6		19		17		16		15		14		13	
7													
8		19		20		21		22		23		24	
9													
10		30		29		28		27		26		25	
11													
12		31		32		33		34		35		36	
13													

section corner common to
 sections 1 & 2, T. 7 N, R. 16 W. and
 sections 6 & 7, T. 7 N, R. 15 W.



**SURVEY &
 REMONUMENTATION**

FEB 27 1998

SECTION

W 1/4 COR.
 SEC. 7, T. 7 N, R. 15 W.

E. & W. 1/4 line

N. 00° 00' 26" E.
 7.48'

East 1/4 cor.
 SECTION 12, T. 7 N, R. 16 W.

Distance A-4 to A-5 = 2637.43'