

SURVEY & REMONUMENTATION

APR 05 1996

OTTAWA COUNTY REMONUMENTATION LAND CORNER RECORDATION CERTIFICATE

COMMISSION Filing Requirement of Act 74, Mich. P.A. 1970

For corners in

Robinson Twp.

Ottawa
(County)

Located In:

Corner Code #

- | | | |
|------------------------------------|---------------------------|----------------------|
| 1. Public Land Survey | T <u>7N</u> R <u>15 W</u> | D - 9 |
| | T _____ R _____ | <u>S. 1/4 Corner</u> |
| | T _____ R _____ | <u>Section 20</u> |
| | T _____ R _____ | _____ |
| 2. Property Controlling in Section | S _____ T _____ R _____ | _____ |
| | S _____ T _____ R _____ | _____ |
| 3. Miscellaneous Property in Sec. | S _____ T _____ R _____ | _____ |
| | S _____ T _____ R _____ | _____ |

RECORDED

95 DEC 12 AM 11:51

Phyllis Robinson
REGISTER OF DEEDS
OTTAWA COUNTY, MI

Register of Deeds Stamp & File Number

4. Lot No. _____, Recorded Plat _____
5. Private Claims _____

	A	B	C	D	E	F	G	H	I	J	K	L	M
2	6	5	4	3	2	1							
3													
4	7	8	9	10	11	12							
5													
6	18	17	16	15	14	13							
7													
8	19	20	21	22	23	24							
9		29	28	27	26	25							
10	30												
11													
12	31	32	33	34	35	36							
13													

I, Carl P. Englert, Jr., in a field survey on October 20, 19 95, do hereby certify that under requirements of P.A. 74, Michigan P.A. of 1970, the corner points mentioned in lines 1 and 2 above were in conformance with regulations and rules therefore as required in the current manual of survey instructions of the United States Department of the Interior, Bureau of Land Management or by a decree of a Court of Law and/or that the corner points mentioned in lines 3, 4 and 5 above were in conformance with the rules of the Michigan Board of Land Surveyors or by a Decree of a Court of Law; established, re-established, monumented, re-monumented, recovered, found as expressed below:

NOTE: Not more than 4 corners, all in the same town and range, may be recorded on this certificate.

A. Description of original monument and accessories and/or subsequent restoration:

D - 9 1/4 corner common to Sections 20 & 29
original corner set May 1832
by Calvin Britain D.S.
Set 1/4 Section Post on True Line
Tamarack 4" is Post.

P.A. 345 OTTAWA COUNTY
PEER APPROVED 11/20/95

Madog D. Tidwell

B. Description of corner evidence found and/or method applied in restoring or reestablishing corner:

D - 9 1/4 corner common to Sections 20 & 29
Set 3" Long 3/4" Steel bar with Ottawa County Remonumentation Cap
1/2 way on line between the SW corner and the SE corner of Section 20.

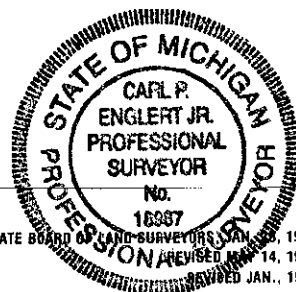
Same concept was used in Survey #3625 by John Kistler & Associates; November, 1968.

Accepted as a careful and faithful representation of the position of the original corner.
(see other side)

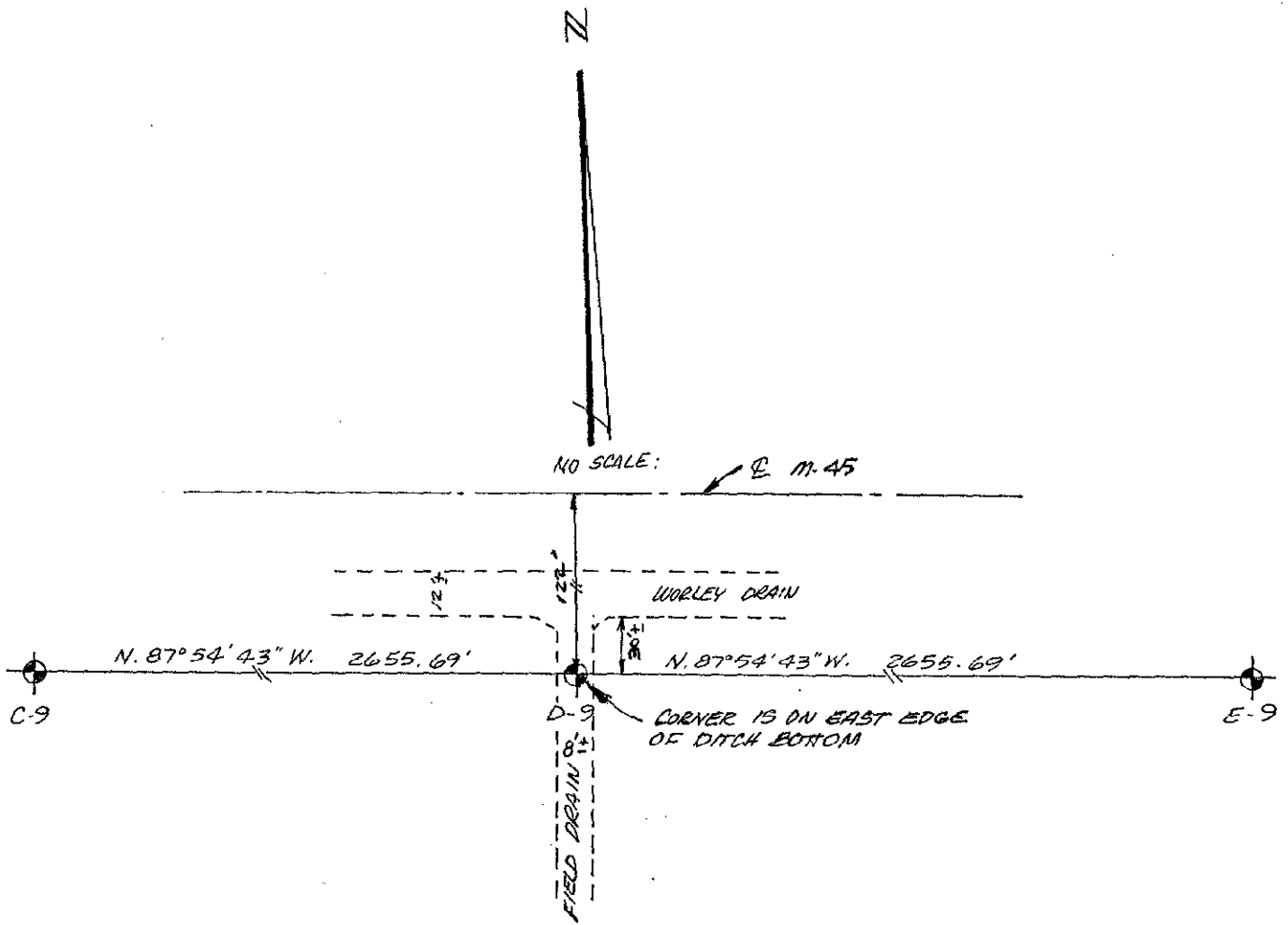
C. Description of monument for corner and accessories established to perpetuate locating the position of the corner:

D - 9 1/4 corner common to Sections 20 & 29
3' Long 3/4" Steel bar with Ottawa County Remonumentation Cap in East side of Ditch Bottom.
Ottawa County Remonumentation tag and nail in W. side 16" Ash N 14° E 77.55'
Ottawa County Remonumentation tag and nail in E. side 8" Birch N 43° W 78.94'
Ottawa County Remonumentation tag and nail in W. side 12" Ash N 4° W 167.32'
SW Corner Section 20 N 87° 54' 43" W 2655.69'
SE Corner Section 20 S 87° 54' 43" E 2655.69'
Centerline M-45, North 122'

Signed by Carl P. Englert Jr. Date 10/23/95
Surveyor's Michigan License No. 18987



FORM APPROVED BY MICHIGAN STATE BOARD OF LAND SURVEYORS JAN. 14, 1975
REVISED JAN., 1983



\$ 11.00 CORNER