

RECORDED

OTTAWA COUNTY REMONUMENTATION
LAND CORNER RECORDATION CERTIFICATE
Filing Requirement of Act 74, Mich. P.A. 1970

97 JUL 24 PM 2: 23

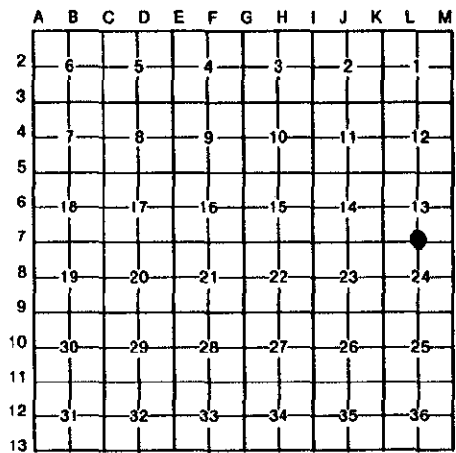
For corners in

Phyllis Williams
REGISTER OF DEEDS
OTTAWA COUNTY, MI

Ottawa (County)	Located In:	Corner Code #
1. Public Land Survey	T <u>7</u> R <u>16</u>	L-7, S $\frac{1}{4}$ corner
	T _____ R _____	Section <u>13</u>
	T _____ R _____	Grand Haven Twp
	T _____ R _____	
2. Property Controlling in Section	S _____ T _____ R _____	
	S _____ T _____ R _____	
3. Miscellaneous Property in Sec.	S _____ T _____ R _____	
	S _____ T _____ R _____	

Register of Deeds Stamp & File Number

4. Lot No. _____, Recorded Plat _____
5. Private Claims _____



I, THOMAS E. JOINER, in a field survey on December 4, 19 96, do hereby certify that under requirements of P.A. 74, Michigan P.A. of 1970, the corner points mentioned in lines 1 and 2 above were in conformance with regulations and rules therefore as required in the current manual of survey instructions of the United States Department of the Interior, Bureau of Land Management or by a decree of a Court of Law and/or that the corner points mentioned in lines 3, 4 and 5 above were in conformance with the rules of the Michigan Board of Land Surveyors or by a Decree of a Court of Law; established, re-established, monumented, re-monumented, recovered, found as expressed below:

NOTE: Not more than 4 corners, all in the same town and range, may be recorded on this certificate.

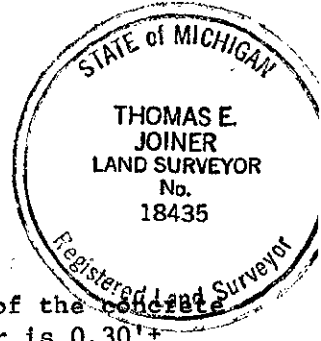
L-7A. Description of original monument and accessories and/or subsequent restoration:

Calvin Britian 1832	Liber 3, Page 168	Liber 3, Page 344
Corrected line West	R.V. Terrill May 4, 1977	John P. Clapp February 6, 1979
Between Sections 13 & 24	Found Cast iron Monument	Found Cast Iron Monument
40.42 chains set $\frac{1}{4}$ Section	18" Ash NE 24.08	18" Ash NE 24.08
Post on true line	24" Oak NE 77.29	24" Oak NE 77.29
4" Black Ash is post.	24" Maple SE 34.19	24" Maple SE 34.19
No witness's given.	8" White Pine WNW 94.63	8" White Pine WNW 94.63
	Clump 3" Maples SW 74.74	Clump 3" Maples SW 74.74
	S Edge of S Headwall S 9.16	S Edge of S Headwall S 9.16

B. Description of corner evidence found and/or method applied in restoring or reestablishing corner:

L-7 falls on top of a concrete box culvert. No monument was found

Evidence Found	18" Ash	NE	24.08
	24" Oak	NE	77.29
	24" Maple	SE	34.19
	Clump of 3" Maples	SW	74.74
	S Edge of S Headwall	S	9.16



Used witness's to establish the corner. Bored a hole 0.25'± into the top of the concrete culvert. Set 0.40 long steel bar with O.C. Remon. Cap in concrete. Corner is 0.30'± below existing gravel road.

P.A. 345 OTTAWA COUNTY
PEER APPROVED 12-9-96

C. Description of monument for corner and accessories established to perpetuate locating the position of the corner:

L-7
Remon. Cap in Box Culvert.

Ottawa County Remon tag and nail in E side	12" Oak	AZ 186°	Dist 29.90
Ottawa County Remon tag and nail in E side	19" Ash	AZ 39°	Dist 24.72
Ottawa County Remon tag and nail in N side	15" Ash	AZ 68°	Dist 43.32
Ottawa County Remon tag and nail in S side	24" Oak	AZ 76°	Dist 77.82
Ottawa County Remon tag and nail in N side	30" Maple	AZ 120°	Dist 35.71
Ottawa County Remon tag and nail in N side of 8 stem	8" Maple	AZ 260°	Dist 75.82
South edge of South Headwall		AZ 180°	Dist 9.16
North edge of North Headwall		AZ 0°	Dist 14.45

Signed by Thomas E. Joiner Date 12-6-96
Surveyor's Michigan License No. 18435