

**SURVEY & REMONUMENTATION**

DEC 01 1998

SECTION

**OTTAWA COUNTY REMONUMENTATION  
LAND CORNER RECORDATION CERTIFICATE  
Filing Requirement of Act 74, Mich. P.A. 1970**

RECORDED  
98 JUL 21 PM 12:14

*Ray Schiller*  
REGISTER OF DEEDS  
OTTAWA COUNTY, MI

For corners in

Ottawa (County)	Located in:	Corner Code #
1. Public Land Survey	T 8N R 13W	A-2 (W 1/4, 6) Wright Twp.
	T R	
	T R	
	T 8N R 14W	M-2
2. Property Controlling in Section	S T R	
	S T R	
3. Miscellaneous Property in Sec.	S T R	
	S T R	

Register of Deeds Stamp & File Number

4. Lot No. \_\_\_\_\_, Recorded Plat \_\_\_\_\_  
5. Private Claims \_\_\_\_\_

	A	B	C	D	E	F	G	H	I	J	K	L	M
1													
2	6	5	4	3	2	1							
3													
4	7	8	9	10	11	12							
5													
6	18	17	16	15	14	13							
7													
8	19	20	21	22	23	24							
9													
10	30	29	28	27	26	25							
11													
12	31	32	33	34	35	36							
13													

I, Donald W. Schiele, in a field survey on June 10, 1998 do hereby state that under requirements of P.A. 74, Michigan P.A. of 1970, the corner points mentioned in lines 1 and 2 above were in conformance with regulations and rules therefore as required in the current manual of survey instructions of the United States Department of the Interior, Bureau of Land Management or by a decree of a Court of Law and/or that the corner points mentioned in lines 3, 4 and 5 above were in conformance with the rules of the Michigan Board of Land Surveyors or by a Decree of a Court of Law; established, re-established, monumented, recovered, found as expressed below:

NOTE: Not more than 2 corners, all in the same town and range, may be recorded on this certificate.

A. Description of original monument and accessories and/or subsequent restoration:  
A-2 1/4 corner common to Sec. 6, Wright Twp. and Sec. 1, T8N, R14W, Polkton Twp.  
Original Government Corner Record: From Ottawa County Surveyor records (undated):  
Set qr sec Post from which a 1. Found stone. West 29.5, S. 2ft. to fence post.  
Lynn 24 in dia bears S35E 19 lks dist & 2. Found Stone & Iron bar.  
a db 36 " " " N45W 11 " " 3. Placed 3" Tile over rod in 9" Conc. Rd.  
Post  
RA. 345 OTTAWA COUNTY  
John Mullett, Deputy Surveyor (SEE REVERSE) PEER APPROVED 6-15-98  
April 7, 1837

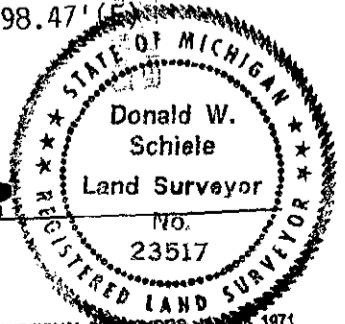
*M.D.N.*

B. Description of corner evidence found and/or method applied in restoring or reestablishing corner:  
A-2 Found PK nail & tag in asphalt road surface.  
Found Steel Bar with Ottawa County Remon Cap in Monument Box: SW cor., Sec. 6, T8N, R13W South 2662.86'  
Found nail & tag in East side of 24" Maple trunk S27°30'W 58.78'(E)  
Found 6" stub of a 1 1/2" square wood stake, 2' below asphalt road surface in rock pile, and 0.23' North, 0.09' East of found PK nail & tag. Accepted wood stake stub as a careful and faithful perpetuation of the position of the original corner.

C. Description of monument for corner and accessories established to perpetuate locating the position of the corner:  
A-2 Removed 1 1/2" square wood stake stub and replaced with 3/4" X 24" Steel Bar with Ottawa County Remon Cap, 3" below asphalt road surface in Monument Box.  
Set Ottawa County Remon Tag & nail in West side of 6" Cherry N05°E 364.53'(E)  
Set Ottawa County Remon Tag & nail in SW side of 4" Maple S13°E 133.35'(E)  
Set Ottawa County Remon Tag & nail in NW side of 24" Maple trunk S27°30'W 59.04'(E)  
Chiselled "X" in West end of concrete headwall N05°30'W 198.47'(E)  
Centerline asphalt road North & South, 0.3' East  
(SEE SKETCH ON REVERSE)

Signed by Donald W. Schiele  
Surveyor's Michigan License No. 23517

Date 6-15-1998



DEC 01 1998

SECTION

Part A., continued:

L.C.R.C. recorded in L. 2, P. 743, 2-20-75:

M-2 (T8N, R14W)

(Found) Iron Bar in 4" Tile

S.W. 59.00 24" Maple

N.E. 16" Maple 49.85

E. To E. Edge of pavement 5.25

From Tru-Line Surveying survey for  
Lemmen Realty, 3-29-90, by Maurice  
J. Rosema, as recorded in L. 7,  
Certified Survey Maps of Ottawa  
County, P. 280:

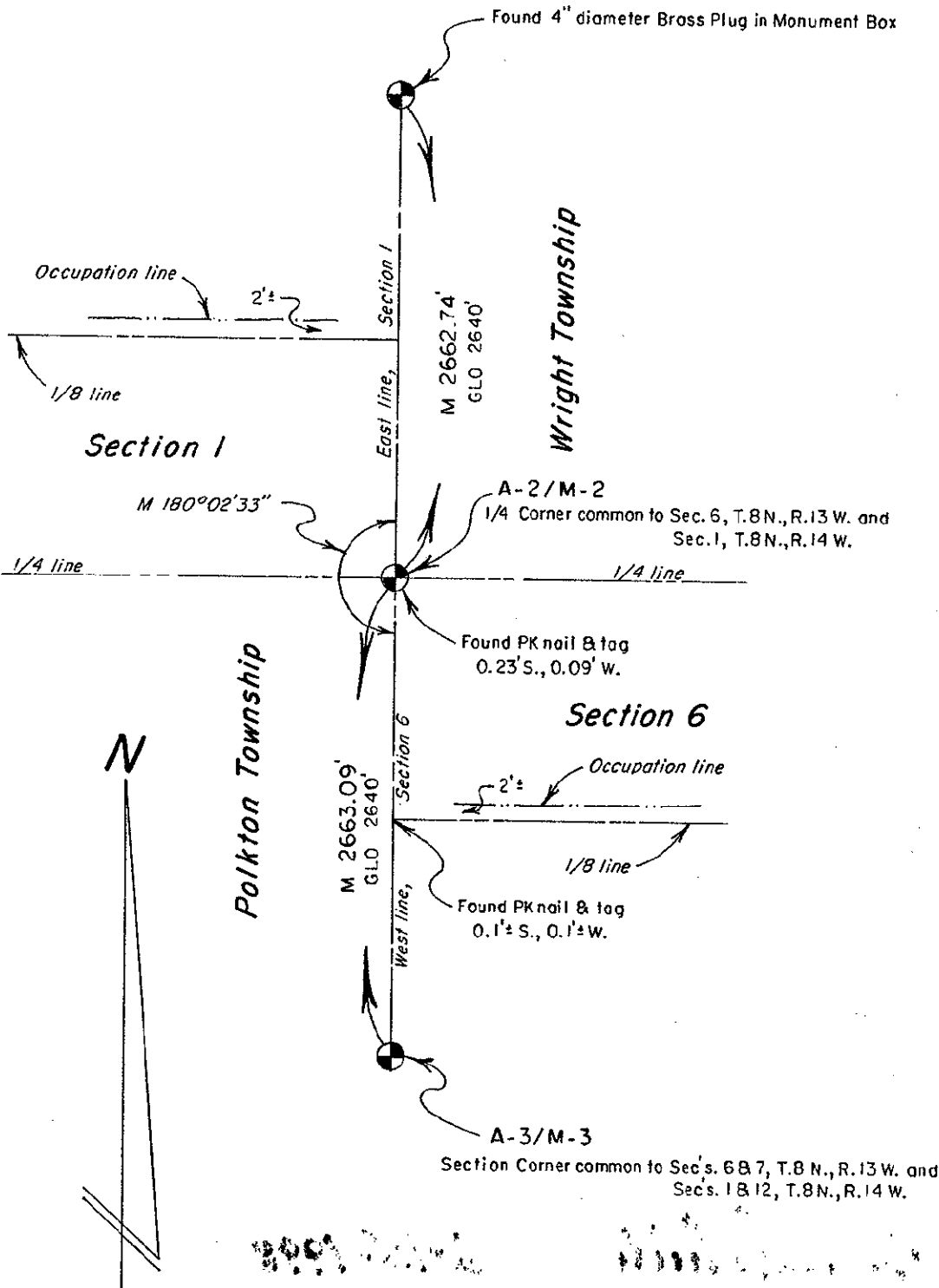
Record distance to SW corner,  
Section 6 = 2662.96'

From field notes attendant to above  
survey:

W 1/4 cor, Sec. 6, T8N, R13W

Set PK Nail & Tag

Set Nail & Tag in E. side 25" Maple --  
SSW 58.82'



No Scale