

SURVEY & REMONUMENTATION

DEC 01 1993

COMMISSION

OTTAWA COUNTY REMONUMENTATION
LAND CORNER RECORDATION CERTIFICATE
 Filing Requirement of Act 74, Mich. P.A. 1970

RECORDED

93 NOV 11 AM 11:55

Deborah Anderson
 REGISTER OF DEEDS
 OTTAWA COUNTY, MI

For corners in

Ottawa

(County)

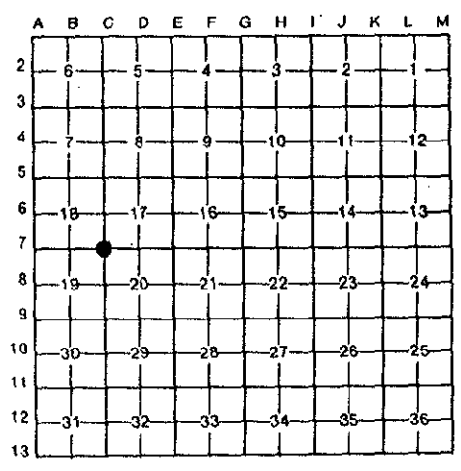
Located In:

Corner Code #

1. Public Land Survey	T <u>8N</u> R <u>13W</u>	<u>C-7 (SW, 17)</u>
	T _____ R _____	<u>Wright Twp.</u>
	T _____ R _____	_____
	T _____ R _____	_____
2. Property Controlling in Section	S _____ T _____ R _____	_____
	S _____ T _____ R _____	_____
3. Miscellaneous Property in Sec.	S _____ T _____ R _____	_____
	S _____ T _____ R _____	_____

Register of Deeds Stamp & File Number

4. Lot No. _____, Recorded Plat _____
 5. Private Claims _____



I, Donald W. Schiele, in a field survey on November 6, 19____, do hereby certify that under requirements of P.A. 74, Michigan P.A. of 1970, the corner points mentioned in lines 1 and 2 above were in conformance with regulations and rules therefore as required in the current manual of survey instructions of the United States Department of the Interior, Bureau of Land Management or by a decree of a Court of Law and/or that the corner points mentioned in lines 3, 4 and 5 above were in conformance with the rules of the Michigan Board of Land Surveyors or by a Decree of a Court of Law; established, re-established, monumented, re-monumented, recovered, found as expressed below:

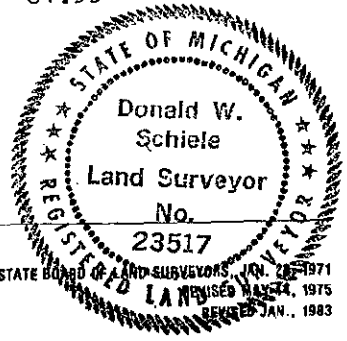
NOTE: Not more than 4 corners, all in the same town and range, may be recorded on this certificate.

A. Description of original monument and accessories and/or subsequent restoration:
 C-7 corner common to Sections 17, 18, 19 & 20, Wright Twp.
 L.C.R.C. recorded in Liber 2, Page 79, 3-23-73. L.C.R.C. recorded in Liber 5, Page 358, 12-6-88.
 Monument Box C.I.M.
 No witnesses TP NE 42.15'
 PP SW 83.03'
 TP SE 54.07'

B. Description of corner evidence found and/or method applied in restoring or reestablishing corner:
 C-7 Found Cast Iron Monument inscribed "Section Corner" in Monument Box and accepted as a careful and faithful perpetuation of the position of the original corner.
 Found nail in SE side of Post NE 42.16'
 Found nail in SW side of Telephone Pole SE 54.02'
 Found bent nail and PK nail in NE side of Power Pole SW 82.67'
 Found bent nail in NW side of Power Pole SW 83.06'

C. Description of monument for corner and accessories established to perpetuate locating the position of the corner:
 C-7 C.I.M. inscribed "Section Corner" 6" below surface in Monument Box.
 Set Ottawa County Remon Tag & nail in SE side of Post N40°E 42.18'
 Set Ottawa County Remon Tag & nail in North side of Post S73°E 139.80'
 Set Ottawa County Remon Tag & nail in SW side of Telephone Pole S39°E 54.03'
 Set Ottawa County Remon Tag & nail in NW side of Power Pole S45°W 83.06'
 Centerline 3" dia. metal High Pressure Gas Pipeline marker N56°W 51.99'
 Centerline asphalt road to North, 2' West
 On Centerline asphalt road to South
 Centerline asphalt road East and West, 3" South

Signed by Donald W. Schiele Date Nov. 8, 1993
 Surveyor's Michigan License No. 23517



FORM APPROVED BY MICHIGAN STATE BOARD OF LAND SURVEYORS, REVISED MARCH 24, 1975
 REVISED JAN., 1983