

FEB 24 2000

RECORDED

OTTAWA COUNTY REMONUMENTATION  
LAND CORNER RECORDATION CERTIFICATE  
Filing Requirement of Act 74, Mich. P.A. 1970

99 OCT 27 PM 1:50

SECTION

For corners in

Ottawa (County)	Located In:	Corner Code #
1. Public Land Survey	T 8N R13W	E-2 (W $\frac{1}{4}$ , 4) Wright Twp.
	T ___ R ___	_____
	T ___ R ___	_____
	T ___ R ___	_____
2. Property Controlling in Section	S ___ T ___ R ___	_____
	S ___ T ___ R ___	_____
3. Miscellaneous Property in Sec.	S ___ T ___ R ___	_____
	S ___ T ___ R ___	_____

*Don W. Schiele*  
REGISTER OF DEEDS  
OTTAWA COUNTY, MI

Register of Deeds Stamp & File Number

4. Lot No. \_\_\_\_\_, Recorded Plat \_\_\_\_\_  
5. Private Claims \_\_\_\_\_

I, Donald W. Schiele, in a field survey on Oct. 5, 19 99 do hereby state that under requirements of P.A. 74, Michigan P.A. of 1970, the corner points mentioned in lines 1 and 2 above were in conformance with regulations and rules therefore as required in the current manual of survey instructions of the United States Department of the Interior, Bureau of Land Management or by a decree of a Court of Law and/or that the corner points mentioned in lines 3, 4 and 5 above were in conformance with the rules of the Michigan Board of Land Surveyors or by a Decree of a Court of Law, established, re-established, monumented, recovered, found as expressed below:

NOTE: Not more than 2 corners, all in the same town and range, may be recorded on this certificate.

1	A	B	C	D	E	F	G	H	I	J	K	L	M
2		6		5	●	4		3		2		1	
3													
4		7		8		9		10		11		12	
5													
6		10		17		16		15		14		13	
7													
8		19		20		21		22		23		24	
9													
10		30		29		28		27		26		25	
11													
12		31		32		33		34		35		36	
13													

*10/18/99*  
*DS*

A. Description of original monument and accessories and/or subsequent restoration:  
E-2 1/4 corner common to Sections 4 & 5, Wright Twp.

Original Government Corner Record:  
Set qr sec post  
Post

L.C.R.C. recorded in L.3, P.136, 11-29-76  
by Carl P. Englert, Jr.:  
E-2 (Found) Rock  
N.E. 35.70 16" Ash  
N.W. 35.39 12" Tw. Ash  
S.W. 21.03 24" Maple

Swamp Ash 24 S80E. 11  
Elm 12 N24W. 26  
Enoch Hammele, Deputy Surveyor, for  
Rasselas Whitcomb, Deputy Surveyor  
Between 9-18 and 9-26, 1838

(SEE REVERSE)

B. Description of corner evidence found and/or method applied in restoring or reestablishing corner:

E-2 Found Rock at intersection of East, South and West fence remnants and accepted as a careful and faithful perpetuation of the position of the original corner.

Found nail in NW side of 20" Maple	N35°E	28.61'(E)
Q of 18" Ash	N57°E	35.7'(E)
Found nail in South side of 9" Ash	S85°30'E	25.00'(E)
Found nail in NW side of 22" Stump	S49°W	21.03'(E)
Found capped iron #24598	N31°30'W	10.12'(E)
Found nail in East side of 12" Twin Ash	N27°W	35.39'(E)
Found additional rocks below surface at corner location.		



C. Description of monument for corner and accessories established to perpetuate locating the position of the corner:

E-2 Removed all rocks, and replaced with 3/4" X 36" Steel Bar with Ottawa County Remon Cap at ground level. Placed rocks found below surface back below surface and around Steel Bar. Placed Rock accepted for corner on West side of Steel Bar.

Set Ottawa County Remon Tag and nail in SE side of 18" Ash	N57°E	35.68'(E)
Set Ottawa County Remon Tag and nail in South side of 9" Ash	S85°30'E	25.15'(E)
Set Ottawa County Remon Tag and nail in SE side of 44" Maple	S50°30'W	26.84'(E)
Capped iron #24598	N31°30'W	10.12'(E)
Set Ottawa County Remon Tag and nail in East side of 12" Twin Ash	N27°W	35.37'(E)

Fence remnants East, South and West  
Capped iron #24598 was established using improper procedures and is not utilized in this survey. (SEE SKETCH ON REVERSE)

Signed by Donald W. Schiele  
Surveyor's Michigan License No. 23517

Date OCT. 18, 1999

RECEIVED  
OCT 27 1999  
REGISTER OF DEEDS  
OTTAWA COUNTY, MI

Part A., continued:

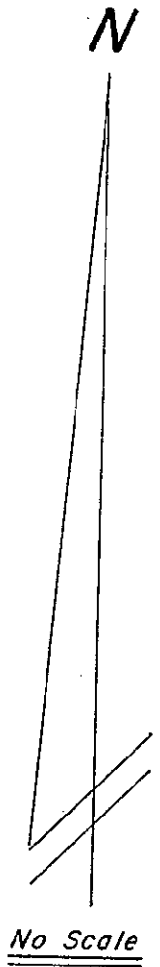
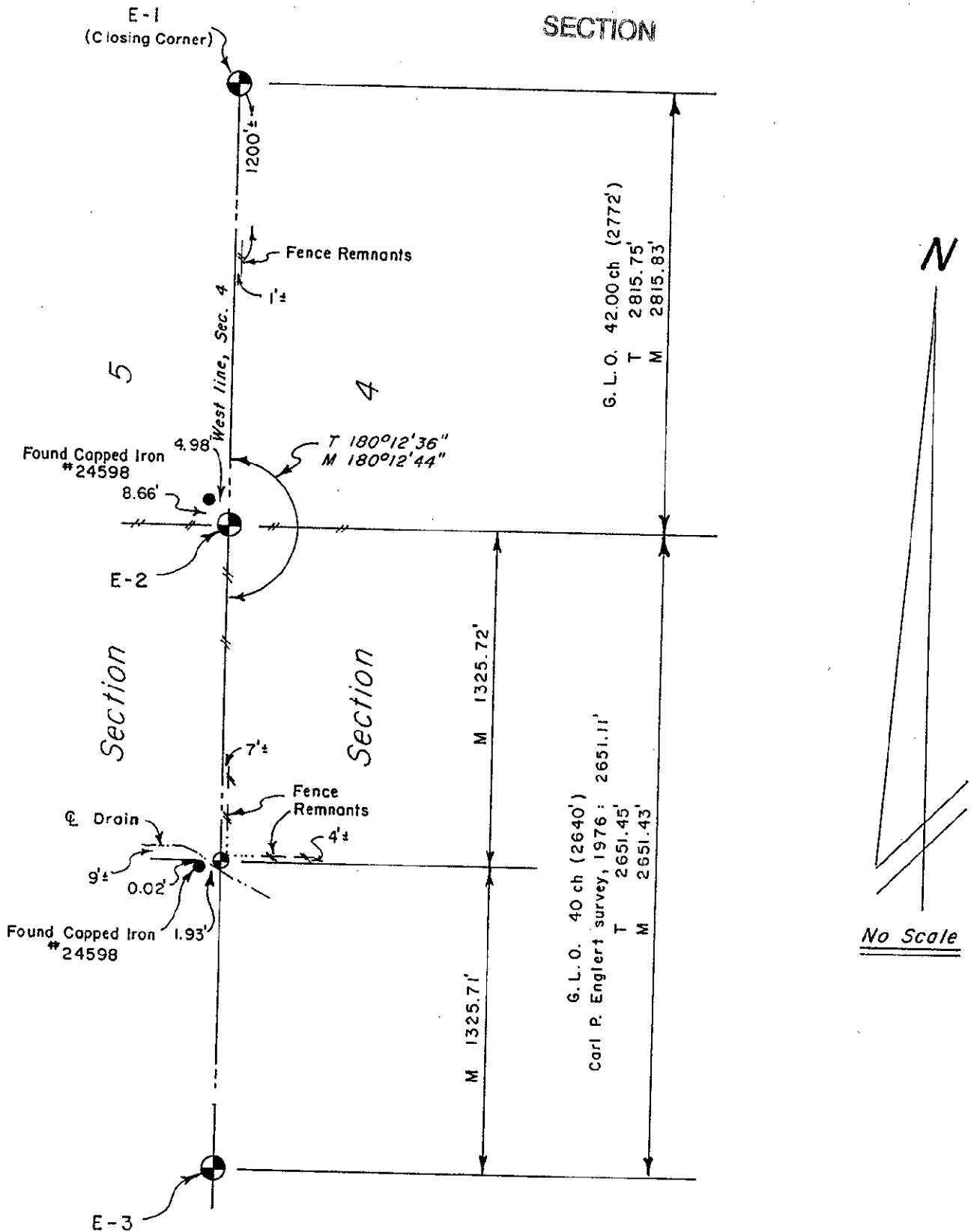
From Ottawa County Surveyor records (undated):

E-2

Stake in Corner

FEB 24 2000

SECTION



T = Tru-Line Surveying, surveyed 1990