

FEB 24 2000

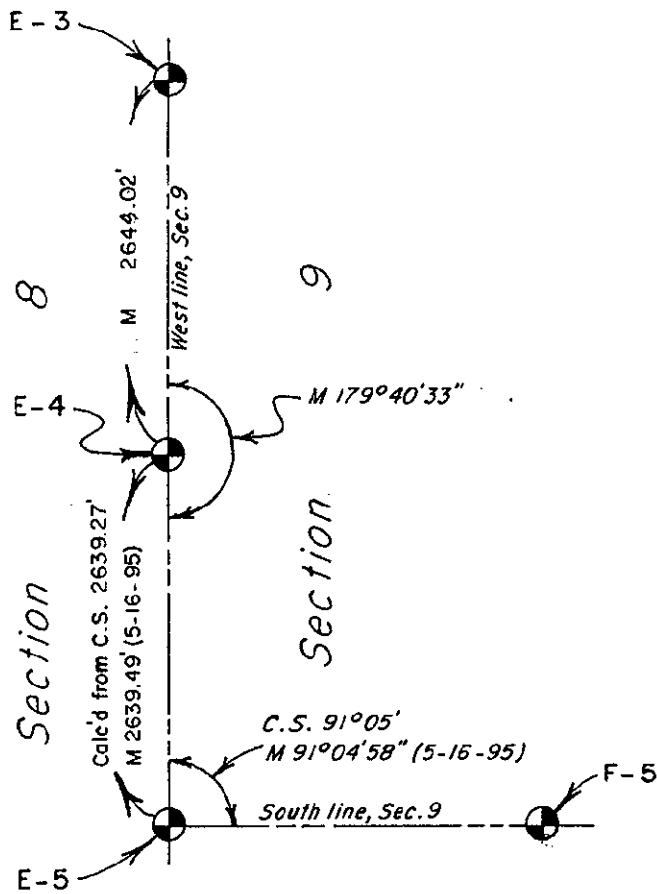
Part A continued:

SECTION

From unrecorded survey #UPS-3772, 5-16-95 by D.W. Schiele:

E-4

36" Stump	N32°E	64.0 to face
22" Stump	N08°E	85.1 to face
Nail in face of 24" Dead Elm	N84°E	54.77
Nail in NW side 12" Ash	N64°E	26.13
Nail in SE side 13" Ash	N76°E	29.45
Nail in North side 15" Dead Ash	S83°E	32.85
Nail in South side Fc. Post	N75°W	2.68



C. S.: L. 1, P. 224, Certified Survey Maps of Ottawa Co., by Kistler & Assoc., surveyed 4-28-72.