

COMMISSION

OTTAWA COUNTY REMONUMENTATION
LAND CORNER RECORDATION CERTIFICATE
Filing Requirement of Act 74, Mich. P.A. 1970

RECORDED
93 DEC 15 AM 9:27

Dorothy Robinson
REGISTER OF DEEDS
OTTAWA COUNTY, MI

For corners in
Ottawa

(County)

Located In:

Corner Code #

1. Public Land Survey	T <u>8N</u>	R <u>13W</u>	<u>E-5 (NE, 17)</u>
	T _____	R _____	<u>Wright Twp.</u>
	T _____	R _____	_____
	T _____	R _____	_____
2. Property Controlling in Section	S _____	T _____	R _____
	S _____	T _____	R _____
3. Miscellaneous Property in Sec.	S _____	T _____	R _____
	S _____	T _____	R _____

Register of Deeds Stamp & File Number

4. Lot No. _____, Recorded Plat _____
5. Private Claims _____

I, Donald W. Schiele, in a field survey on November 30, 19 93, do hereby certify that under requirements of P.A. 74, Michigan P.A. of 1970, the corner points mentioned in lines 1 and 2 above were in conformance with regulations and rules therefore as required in the current manual of survey instructions of the United States Department of the Interior, Bureau of Land Management or by a decree of a Court of Law and/or that the corner points mentioned in lines 3, 4 and 5 above were in conformance with the rules of the Michigan Board of Land Surveyors or by a Decree of a Court of Law; established, re-established, monumented, re-monumented, recovered, found as expressed below:

NOTE: Not more than 4 corners, all in the same town and range, may be recorded on this certificate.

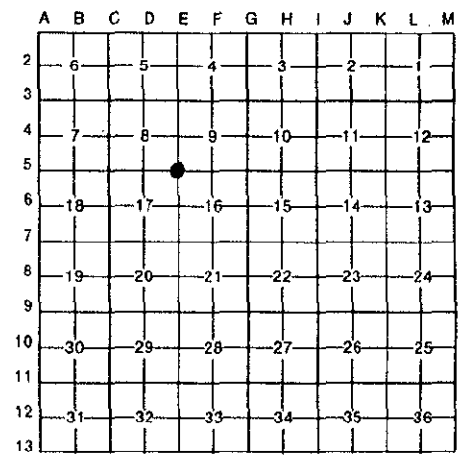
A. Description of original monument and accessories and/or subsequent restoration:
E-5 corner common to Sections 8,9,16 & 17, Wright Twp.
L.C.R.C. recorded in Liber 1, Page 391, 5-11-72
C.I.M.

"One Lane Bridge Sign"	S10°W	68.67'
"One Lane Bridge Sign"	N80°W	54.66'
St. Sign	N 5°E	22.95'
Rd. Sign	North	21.55'

B. Description of corner evidence found and/or method applied in restoring or reestablishing corner:
E-5 Found Cast Iron Monument with top broken off and accepted as a careful and faithful perpetuation of the position of the original corner.
Road Sign North 21.70'

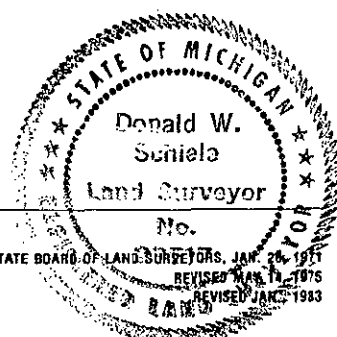
C. Description of monument for corner and accessories established to perpetuate locating the position of the corner:

E-5 Cast Iron Monument with top broken off 5" below surface.		
Centerline 6" diameter Metal Post	N15°E	41.63'
Centerline 6" diameter Metal Post	N26°E	24.54'
Set Ottawa County Remon Tag & nail in West side of 7" Elm	S10°E	150.71'(E)
Set Ottawa County Remon Tag & nail in East side of 18" Maple	S09°W	431.69'(E)
Set Ottawa County Remon Tag & nail in North side of 11" Maple	S77°W	252.30'(E)
Fence line to North, 11' East		
Centerline gravel road to South, 1' East		
On Centerline gravel road East & West		



Signed by Donald W. Schiele
Surveyor's Michigan License No. 23517

Date DEC. 6, 1993



FORM APPROVED BY MICHIGAN STATE BOARD OF LAND SURVEYORS, JAN. 26, 1971
REVISED MAR. 17, 1975
REVISED JAN. 1983