

RECORDED

OTTAWA COUNTY REMONUMENTATION  
LAND CORNER RECORDATION CERTIFICATE  
Filing Requirement of Act 74, Mich. P.A. 1970

93 DEC 15 AM 9:27

COMMISSION

For corners in  
Ottawa  
(County)

Located In:

Corner Code #

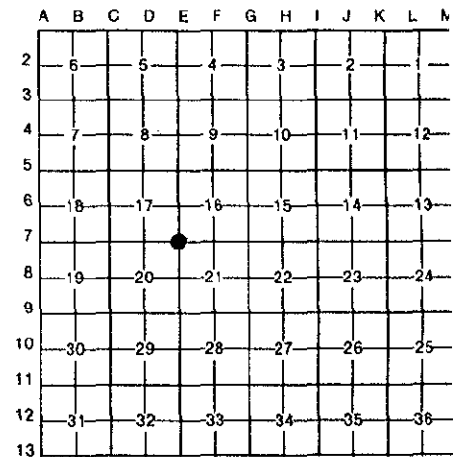
1. Public Land Survey	T <u>8N</u> R <u>13W</u>	<u>E-7 (SE, 17)</u>
	T _____ R _____	<u>Wright Twp.</u>
	T _____ R _____	_____
	T _____ R _____	_____
2. Property Controlling in Section	S _____ T _____ R _____	_____
	S _____ T _____ R _____	_____
3. Miscellaneous Property in Sec.	S _____ T _____ R _____	_____

*Phyllis Robinson*  
REGISTER OF DEEDS  
OTTAWA COUNTY, MI

Register of Deeds Stamp & File Number

4. Lot No. \_\_\_\_\_, Recorded Plat \_\_\_\_\_  
5. Private Claims \_\_\_\_\_

I, Donald W. Schiele, in a field survey on November 16, 19 93, do hereby certify that under requirements of P.A. 74, Michigan P.A. of 1970, the corner points mentioned in lines 1 and 2 above were in conformance with regulations and rules therefore as required in the current manual of survey instructions of the United States Department of the Interior, Bureau of Land Management or by a decree of a Court of Law and/or that the corner points mentioned in lines 3, 4 and 5 above were in conformance with the rules of the Michigan Board of Land Surveyors or by a Decree of a Court of Law; established, re-established, monumented, re-monumented, recovered, found as expressed below:



**NOTE: Not more than 4 corners, all in the same town and range, may be recorded on this certificate.**

A. Description of original monument and accessories and/or subsequent restoration:  
E-7 corner common to Sections 16, 17, 20 & 21, Wright Twp.

L.C.R.C. recorded in Liber 1, Page 811, 12-8-72	L.C.R.C. recorded in Liber 3, Page 269, 6-12-78	L.C.R.C. recorded in Liber 5, Page 279, 8-17-87
Monument Box	1/2" Pipe	C.I.M.
No Witnesses	18" W. Pine N35°W 72.93'	PK in PP SW 63.63
	20" W. Pine N53°W 53.75'	Nail in 22" W Pine WNW 72.82
	10" Spruce N47°E 70.00'	Nail & Bottle Cap
	Power Pole S52°W 63.59'	in 22" W Pine NW 54.90
		Nail in 9" Spruce NE 63.42

B. Description of corner evidence found and/or method applied in restoring or reestablishing corner:  
E-7 Found Cast Iron Monument inscribed "Section Corner" in Monument Box and accepted as a careful and faithful perpetuation of the position of the original corner.

Found nail in SE side of 14" Spruce	N51°E	70.26'
Found Tag # 2442 and nail in cut in South side of 14" Spruce	N51°E	69.85'
Found nail in SE side of 12" Spruce	N55°E	63.41'
Found Tag # 2442 and nail in SE side of Power Pole	S47°W	63.57'
Found nail in SW side of 23" White Pine	N55°W	72.75'
Found Tag # 14091 and nail in SE side of 24" White Pine	N39°W	53.67'
Found double-headed nail in NE side of 24" White Pine	N39°W	54.85'

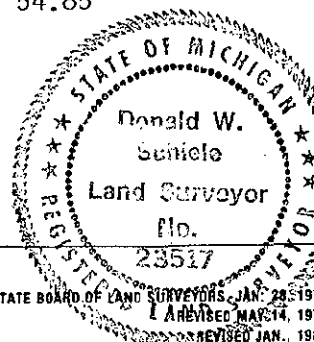
C. Description of monument for corner and accessories established to perpetuate locating the position of the corner:  
E-7 Cast Iron Monument inscribed "Section Corner" 5" below surface in Monument Box.

Set Ottawa County Remon Tag & nail in SE side of 12" Spruce	N55°E	63.07'
Set Ottawa County Remon Tag & nail in North side of Power Pole	S71°E	134.89'
Set Ottawa County Remon Tag & nail in SE side of Power Pole	S47°W	63.57'
Set Ottawa County Remon Tag & nail in SW side of 23" White Pine	N55°W	72.75'
Set Ottawa County Remon Tag & nail in NE side of 24" White Pine	N39°W	54.85'
On Centerline gravel road North & South		
Centerline asphalt road East & West 2' North		

Signed by Donald W. Schiele

Date DEC. 6, 1993

Surveyor's Michigan License No. 23517



FORM APPROVED BY MICHIGAN STATE BOARD OF LAND SURVEYORS, JAN. 28, 1971  
REVISED MAY 14, 1971  
REVISED JAN., 1988