

**SURVEY & REMONUMENTATION**

APR 24 1995

OTTAWA COUNTY REMONUMENTATION  
**LAND CORNER RECORDATION CERTIFICATE**  
 Filing Requirement of Act 74, Mich. P.A. 1970

RECORDED

94 DEC 14 AM 10:02

**COMMISSION**

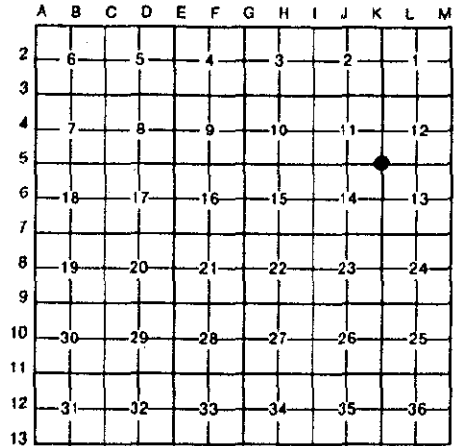
For corners in

*Robert Robinson*  
 REGISTER OF DEEDS  
 OTTAWA COUNTY, MI

Ottawa (County)	Located In:	Corner Code #
1. Public Land Survey	T 8N R 13W	K-5 (NW, 13) Wright Twp.
	T R	
	T R	
	T R	
2. Property Controlling in Section	S T R	
	S T R	
3. Miscellaneous Property in Sec.	S T R	
	S T R	

Register of Deeds Stamp & File Number

4. Lot No. \_\_\_\_\_, Recorded Plat \_\_\_\_\_  
 5. Private Claims \_\_\_\_\_



I, Donald W. Schiele, in a field survey on December 9, 19 94 do hereby certify that under requirements of P.A. 74, Michigan P.A. of 1970, the corner points mentioned in lines 1 and 2 above were in conformance with regulations and rules therefore as required in the current manual of survey instructions of the United States Department of the Interior, Bureau of Land Management or by a decree of a Court of Law and/or that the corner points mentioned in lines 3, 4 and 5 above were in conformance with the rules of the Michigan Board of Land Surveyors or by a Decree of a Court of Law; established, re-established, monumented, re-monumented, recovered, found as expressed below:

**NOTE: Not more than 4 corners, all in the same town and range, may be recorded on this certificate.**

A. Description of original monument and accessories and/or subsequent restoration:  
 K-5 corner common to Sections 11, 12, 13 & 14, Wright Twp.

Original Government Corner Record: L.C.R.C. recorded in Liber 1, Page 195, 12-23-71  
 Set corner post Sec. 11, 12, 13, 14 1/2" solid iron in centerline mon box  
 Post MBT Pole N80°E 136.86'  
 Beech 14 N19E 32 CP Pole S55°E 38.38'  
 Do 12 S46W 39 SE cor hse N50°W 144.45'

Enoch Hammele, Deputy Surveyor  
 Between 9-18 and 9-26, 1838

(SEE REVERSE)

B. Description of corner evidence found and/or method applied in restoring or reestablishing corner:

K-5 Found Cast Iron Monument inscribed "Section Corner", 7 1/2" below surface in Monument Box, and accepted as a careful and faithful perpetuation of the position of the original corner.

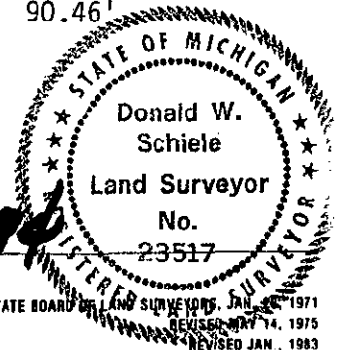
Found nail in SE side of 10" Apple	N44°30'E	72.00'
Found nail in NE side of Power Pole	S48°E	44.84'
Found nail in West side of Power Pole	S48°E	44.41'
Centerline Street Sign	S48°30'W	46.6'
SE corner, brick face to House # 837	N45°W	144.46'
Found nail in NE side of 10" Cedar	N33°30'W	90.49'

*Arday D. Newbold*  
 P.A. 345 OTTAWA COUNTY  
**PEER APPROVED** 12/12/94

C. Description of monument for corner and accessories established to perpetuate locating the position of the corner:

K-5 Cast Iron Monument inscribed "Section Corner", 7 1/2" below surface in Monument Box.  
 Set Ottawa County Remon Tag & nail in NW side of 10" Apple N44°30'E 72.19'  
 Set Ottawa County Remon Tag & nail in SW side of Power Pole S48°E 44.63'  
 Set Ottawa County Remon Tag & nail in North side of Power Pole S77°30'W 140.37'  
 SE corner, brick face to House # 837 N45°W 144.46'  
 Set Ottawa County Remon Tag & nail in NE side of 10" Cedar N33°30'W 90.46'  
 Centerline asphalt road North & South, 0.6' West  
 On centerline asphalt road East & West

Signed by Donald W. Schiele Date Dec. 12, 1994  
 Surveyor's Michigan License No. 23517



PART A. continued:

L.C.R.C. recorded in Liber 2, Page 797, 8-26-75

K-5

Steel Bar in Mon. Box

St. Sign SW 48.85'

P.P. SE 42.22'

6" Cedar NW 90.30'

L.C.R.C. recorded in Liber 6, Page 95, 1-28-91

K-5

Set CIM

Street Sign SW 46.57'

6" Cedar NW 90.52'

Tel. Pole SE 44.84'

6" Apple NE 72.02'

REMON LIBER 2 PAGE 105