

SURVEY & REMONUMENTATION

FEB 27 1998

SECTION

**OTTAWA COUNTY REMONUMENTATION
LAND CORNER RECORDATION CERTIFICATE
Filing Requirement of Act 74, Mich. P.A. 1970**

For corners in

<u>Ottawa</u> (County)	Located In:	Corner Code #
	Wright Township	LM-3
1. Public Land Survey	T 8N R 13W	Reference
	T R	Monument to
	T R	SE corner of
	T R	Section 1 and
2. Property Controlling in Section	S 1 T 8N R 13W	NE corner of
	S 12 T 8N R 13W	Section 12
3. Miscellaneous Property in Sec.	S T R	SEQUENTIAL
	S T R	CORNER # 3

RECORDED

97 DEC -8 AM 11:39

Gary Schultz
REGISTER OF DEEDS
OTTAWA COUNTY, MI

Register of Deeds Stamp & File Number

4. Lot No. _____, Recorded Plat _____
5. Private Claims _____

I, Carl P. Englert, in a field survey on 9/12, 1997 do hereby state that under requirements of P.A. 74, Michigan P.A. of 1970, the corner points mentioned in lines 1 and 2 above were in conformance with regulations and rules therefore as required in the current manual of survey instructions of the United States Department of the Interior, Bureau of Land Management or by a decree of a Court of Law and for that the corner points mentioned in lines 3, 4 and 5 above were in conformance with the rules of the Michigan Board of Land Surveyors or by a Decree of a Court of Law, established, re-established, monumented, recovered, found as expressed below:

NOTE: Not more than 2 corners, all in the same town and range, may be recorded on this certificate.

	A	B	C	D	E	F	G	H	I	J	K	L	M
1													
2	6		5		4		3		2		1		
3													X
4	7		8		9		10		11		12		
5													
6	18		17		16		15		14		13		
7													
8	19		20		21		22		23		24		
9													
10	30		29		28		27		26		25		
11													
12	31		32		33		34		35		36		
13													

A. Description of original monument and accessories and/or subsequent restoration:

M-3 NE corner Section 12 & SE corner Section 1
G.L.O., 1837, Noah Brookfield
True line between Sections 1 & 12
49.17' to Margin of Lake a 9" Beech
for Meander Post

P.A. 345 OTTAWA COUNTY
PEER APPROVED 12-1-97

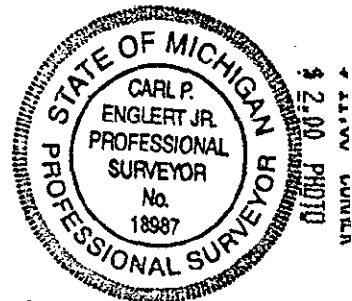
GOY

B. Description of corner evidence found and/or method applied in restoring or reestablishing corner:

M-3 NE corner Section 12 & SE corner Section 1
Set 3/4"x3' steel bar with O.C. Remon Cap 5" deep
on East extension of South line of the
SW 1/4 of Section 1 at edge of Marsh AND ACCEPTED
POSITION OF STEEL BAR WITH O.C. REMON CAP
AS A CAREFUL AND FAITHFUL PERPETUATION
OF THE ORIGINAL POSITION OF THE SOUTH
LINE OF THE SE 1/4 OF SECTION 1.

C. Description of monument for corner and accessories established to perpetuate locating the position of the corner:

M-3 NE corner Section 12 & SE corner Section 1
Reference Monument on West side Cranberry Lake
3/4"x3' Steel Bar with O.C. Remon Cap
O.C. Remon tag & nail in S. Side 12" Willow N62°W 46.86'
O.C. Remon tag & nail in SW Side P.P. S30°E 110.03'
O.C. Remon tag & nail in NW Side 10" Ash S31°W 16.67'
O.C. Remon tag & nail in NW Side 8" Ash N43°E 35.86'
Waters edge East 300'±



Signed by Carl P. Englert
Surveyor's Michigan License No. 18987

Date 12/1/1997

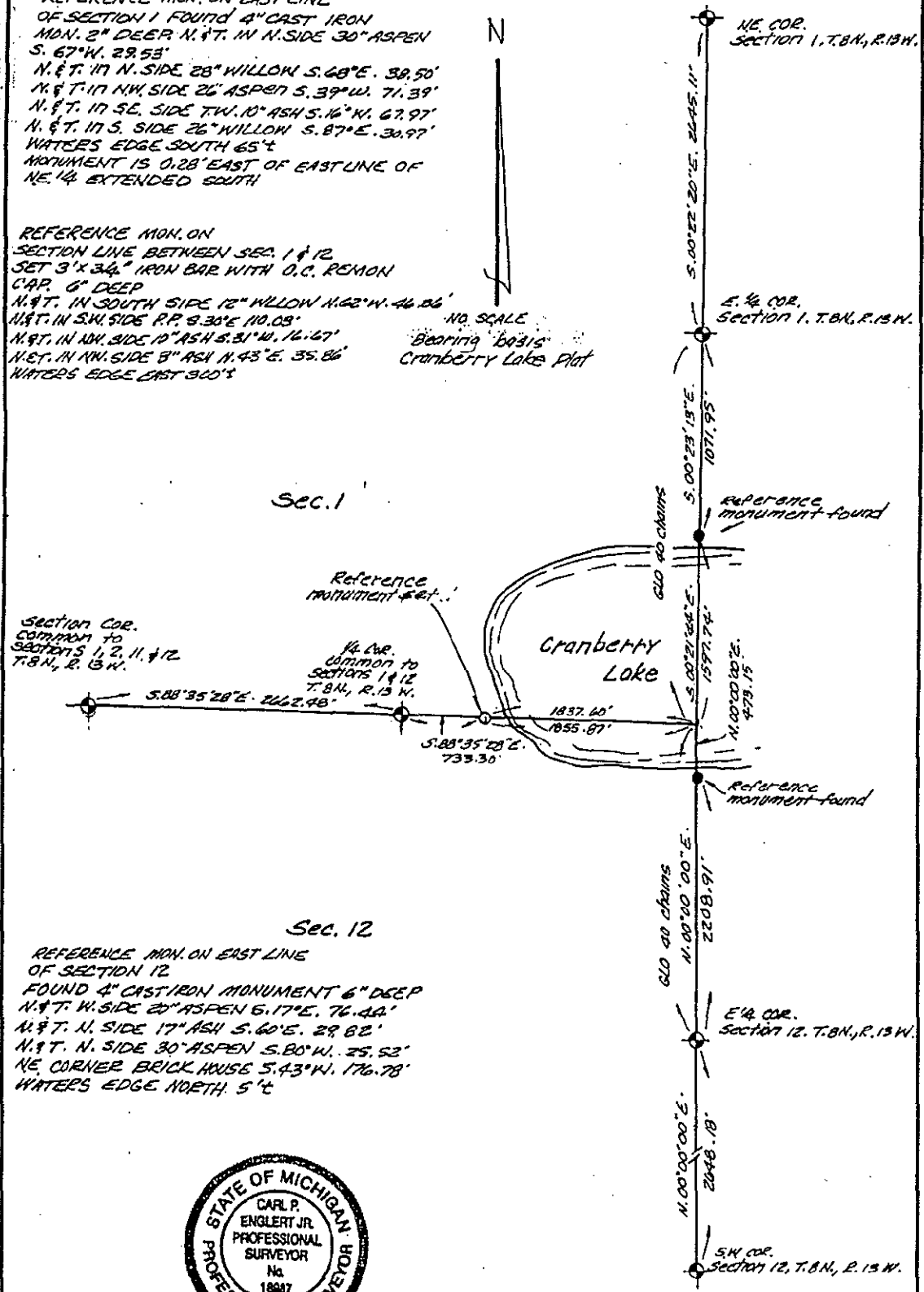
CERTIFICATE OF SURVEY

REFERENCE MON. ON EAST LINE OF SECTION 1 FOUND 4" CAST IRON MON. 2" DEEP N. 47° IN N. SIDE 30" ASPEN S. 67° W. 29.53' N. 47° IN N. SIDE 28" WILLOW S. 68° E. 39.50' N. 47° IN NW. SIDE 26" ASPEN S. 39° W. 71.39' N. 47° IN SE. SIDE TW. 10" ASH S. 16° N. 67.97' N. 47° IN S. SIDE 26" WILLOW S. 87° E. 30.97' WATER'S EDGE SOUTH 65' MONUMENT IS 0.28' EAST OF EAST LINE OF NE. 1/4 EXTENDED SOUTH

REFERENCE MON. ON SECTION LINE BETWEEN SEC. 1 & 12 SET 3" x 3/4" IRON BAR WITH O.C. REMON CAP 6" DEEP N. 47° IN SOUTH SIDE 12" WILLOW N. 62° W. 46.86' N. 47° IN SW. SIDE R.P. 8.30' E. 10.08' N. 47° IN NW. SIDE 10" ASH S. 31° W. 16.47' N. 47° IN NW. SIDE 8" ASH N. 43° E. 35.86' WATER'S EDGE EAST 300'



NO. SCALE
Bearing basis
Cranberry Lake Plat

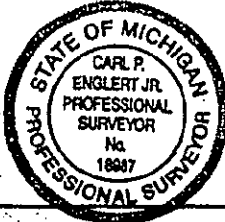


Section Cor. common to sections 1, 2, 11, & 12 T. 8 N., R. 13 W.

Sec. 1

Sec. 12

REFERENCE MON. ON EAST LINE OF SECTION 12 FOUND 4" CAST IRON MONUMENT 6" DEEP N. 47° W. SIDE 20" ASPEN S. 17° E. 76.44' N. 47° N. SIDE 17" ASH S. 60° E. 29.82' N. 47° N. SIDE 30" ASPEN S. 80° W. 25.53' NE CORNER BRICK HOUSE S. 43° W. 176.78' WATER'S EDGE NORTH 5'



 CARL P. ENGLERT JR., Professional Surveyor No. 18987		MILANOWSKI & ENGLERT ENGINEERING & SURVEYING INC. 927 Beechtree Street, Suite 3 Grand Haven, Michigan 49417 Phone: 616-847-4070 FAX: 616-847-6626	
I certify that I have surveyed the land as described and shown hereon and that there are no visible encroachments except as shown and that the requirements of P.A. 132 have been complied with. Error of Closure <u>1/44119</u> Basis of Bearings <u>1/44119</u>		FOR <u>COUNTY OF OTTAWA</u> Sec. 1 & 12, T. 8 N., R. 13 W. UPIANT TWP.	
This survey was made from the legal description shown above. The description should be compared with the Abstract Title or Title Insurance Policy for accuracy, easements and exceptions.		DATE <u>12-1-97</u>	DRAWN BY <u>BL.</u>
LEGEND <input type="checkbox"/> Set Conc. Mon. <input type="checkbox"/> Found Conc. Mon. <input type="checkbox"/> Set Capped Iron <input type="checkbox"/> Found Iron P. Platted M. Measured D. Described		SHEET <u>1</u> of <u>1</u>	JOB No. <u>5107</u>

SURVEY & REMONUMENTATION

FEB 27 1998

SECTION