

**SURVEY & REMONUMENTATION**

**FEB 27 1998**

**OTTAWA COUNTY REMONUMENTATION  
LAND CORNER RECORDATION CERTIFICATE  
Filing Requirement of Act 74, Mich. P.A. 1970**

**SECTION**

For corners in

<u>Ottawa</u> (County)	Located In:	Corner Code <u>##</u>
1. Public Land Survey	T <u>8N</u> R <u>14W</u>	<u>B-1 (N¼, 6)</u> <u>Polkton Twp.</u>
	T _____ R _____	_____
	T _____ R _____	_____
	T _____ R _____	_____
2. Property Controlling in Section	S _____ T _____ R _____	_____
	S _____ T _____ R _____	_____
3. Miscellaneous Property in Sec.	S _____ T _____ R _____	_____
	S _____ T _____ R _____	_____
4. Lot No. _____, Recorded Plat _____		
5. Private Claims _____		

**RECORDED**

**97 DEC -8 AM 11:41**

*Don Schiele*  
REGISTER OF DEEDS  
OTTAWA COUNTY, MI

**Register of Deeds Stamp & File Number**

Donald W. Schiele in a field survey on November 19, 1997, do hereby certify that under requirements of P.A. 74, Michigan P.A. of 1970, the corner points mentioned in lines 1 and 2 above were in conformance with regulations and rules therefore as required in the current manual of survey instructions of the United States Department of the Interior, Bureau of Land Management or by a decree of a Court of Law and/or that the corner points mentioned in lines 3, 4 and 5 above were in conformance with the rules of the Michigan Board of Land Surveyors or by a Decree of a Court of Law; established, re-established, monumented, re-monumented, recovered, found as expressed below:

A	B	C	D	E	F	G	H	I	J	K	L
2	6	5	4	3	2	1					
3											
4	7	8	9	10	11	12					
5											
6	18	17	16	15	14	13					
7											
8	19	20	21	22	23	24					
9											
10	30	29	28	27	26	25					
11											
12	31	32	33	34	35	36					
13											

**NOTE: Not more than 4 corners, all in the same town and range, may be recorded on this certificate.**

A. Description of original monument and accessories and/or subsequent restoration:  
B-1 North 1/4 corner, Section 6, Polkton Twp.

Original Government Survey by John Mullett, Deputy Surveyor, between 4-8 and 4-16, 1837. Corner not set.	L.C.R.C. recorded in Liber 2, Page 253, 8-6-73: B-1 1/2" Rod Found N.N.E. 29.33 10" Osage Orange S.W. 41.62 8" Stump S.E. 35.00 St. Sign	L.C.R.C. recorded in Liber 2, Page 423, 11-30-73: B-1 Fd 1/2" Rod N.N.E. 29.33' 10" Osage Orange S.W. 41.62' 8" Stump S.E. 35.00" Street Sign
---	---	--

(SEE REVERSE)

B. Description of corner evidence found and/or method applied in restoring or reestablishing corner:  
B-1 Found Cast Iron Monument (broken), 7" below surface of gravel road. This position not established by original government surveyors. This monument is accepted as the best available evidence of the position of the corner.

Found nail in East side of 10" Twin Osage Orange Centerline 9" Stump	N14°E 29.07' (E) S66°30'E 77.2'
Found nail & tag in East side of 12" Osage Orange	S68°W 86.11'
Found 1/2" Steel Bar, South 1/4 corner, Sec. 31, T9N, R14W	S90°W 59.07' (E) (not ratified)
On South line of Section 31, T9N, R14W	

**P.A. 345 OTTAWA COUNTY**  
PEER APPROVED 12-1-97  
*Don Schiele*

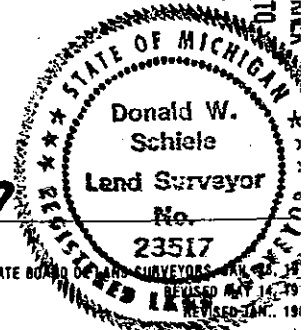
C. Description of monument for corner and accessories established to perpetuate locating the position of the corner:

B-1 Broken Cast Iron Monument, 7" below surface of gravel road.	
Set Ottawa County Remon Tag & nail in East side of 10" Twin Osage Orange	N14°E 29.03' (E)
Set Ottawa County Remon Tag & nail in NE side of 8" Pine	S49°30'E 51.89' (E)
Set Ottawa County Remon Tag & nail in NW side of 10" Pine	S36°30'W 78.48' (E)
1/2" Steel Bar, South 1/4 corner, Sec. 31, T9N, R14W (not ratified)	S90°W 59.07' (E)
Set Ottawa County Remon Tag & nail in West side of 12" Osage Orange	N16°30'W 29.84' (E)
Centerline gravel road South, 2' West	
Centerline gravel road East & West, 1' South	

(SEE SKETCH ON REVERSE)

Signed by Donald W. Schiele  
Surveyor's Michigan License No. 23517

Date Dec 5, 1997

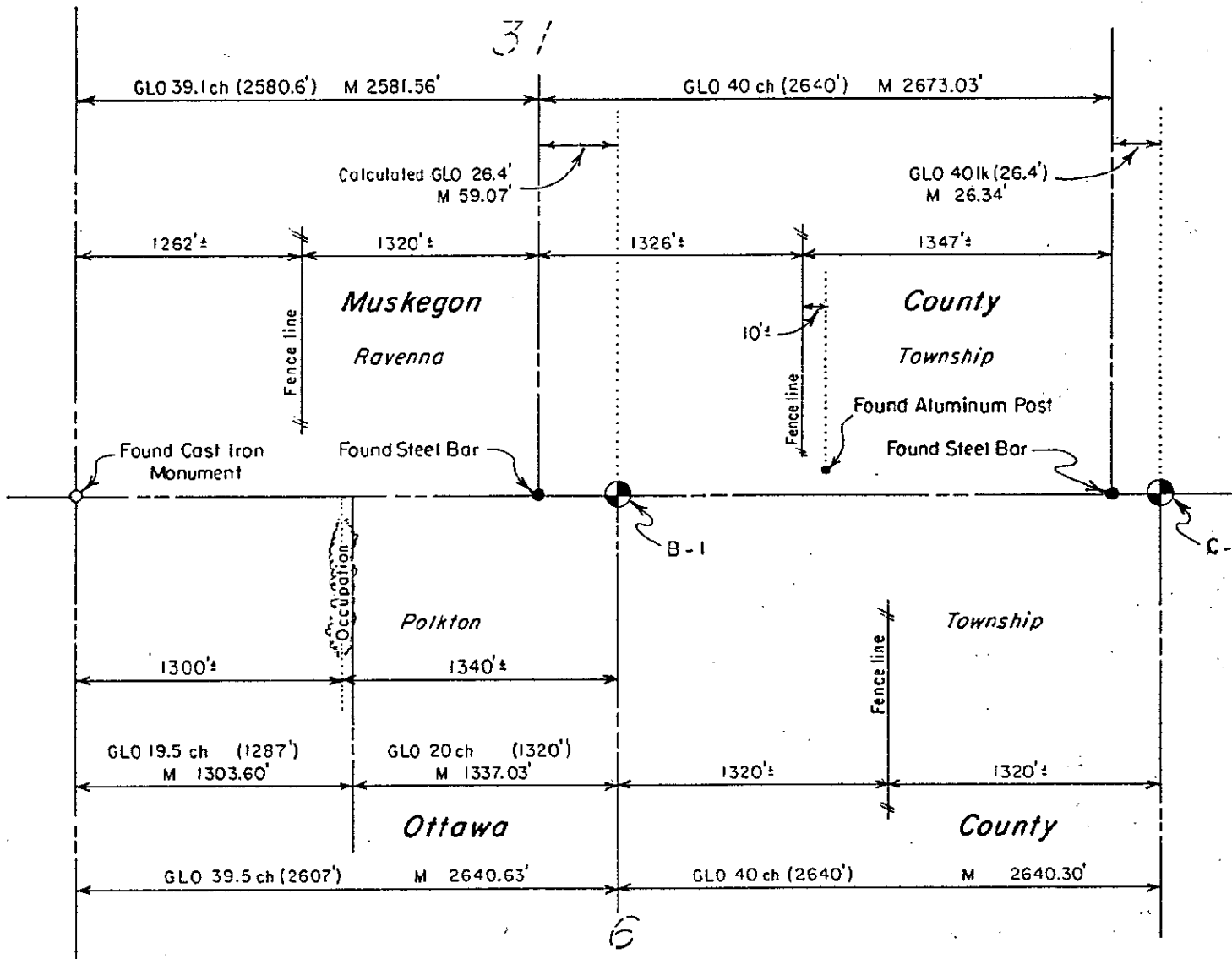


FORM APPROVED BY MICHIGAN STATE BOARD OF LAND SURVEYORS, REVISED MAY 14, 1991

Part A., continued:

L.C.R.C. recorded in Liber 4, Page 96, 8-13-80:

(B-1) Set Cast Iron Monument  
Inscribed "Section Corner"  
Street Sign SE 36.6  
9" Osage Orange ESE 76.70  
10" Osage Orange NNE 29.14  
10" Osage Orange SW 86.05



SURVEY &  
REMONUMENTATION

FEB 27 1998

SECTION