

SURVEY & REMONUMENTATION

FEB 27 1998

**SECTION OTTAWA COUNTY REMONUMENTATION
LAND CORNER RECORDATION CERTIFICATE
Filing Requirement of Act 74, Mich. P.A. 1970**

For corners in

<u>Ottawa</u> (County)	Located In:	Corner Code #
1. Public Land Survey	T <u>8N</u> R <u>14W</u>	<u>C-1 (NE, 6)</u> <u>Polkton Twp.</u>
	T _____ R _____	_____
	T _____ R _____	_____
	T _____ R _____	_____
2. Property Controlling in Section	S _____ T _____ R _____	_____
	S _____ T _____ R _____	_____
3. Miscellaneous Property in Sec.	S _____ T _____ R _____	_____
	S _____ T _____ R _____	_____
4. Lot No. _____, Recorded Plat _____		
5. Private Claims _____		

RECORDED:

97 DEC -8 AM 11:38

Harry R. Schiele
REGISTER OF DEEDS
OTTAWA COUNTY, MI

Register of Deeds Stamp & File Number

A	B	C	D	E	F	G	H	I	J	K	L	M
2	6	5	4	3	2	1						
3												
4	7	8	9	10	11	12						
5												
6	18	17	16	15	14	13						
7												
8	19	20	21	22	23	24						
9												
10	30	29	28	27	26	25						
11												
12	31	32	33	34	35	36						
13												

I, Donald W. Schiele, in a field survey on November 19, 1997, do hereby certify that under requirements of P.A. 74, Michigan P.A. of 1970, the corner points mentioned in lines 1 and 2 above were in conformance with regulations and rules therefore as required in the current manual of survey instructions of the United States Department of the Interior, Bureau of Land Management or by a decree of a Court of Law and/or that the corner points mentioned in lines 3, 4 and 5 above were in conformance with the rules of the Michigan Board of Land Surveyors or by a Decree of a Court of Law; established, re-established, monumented, re-monumented, recovered, found as expressed below:

NOTE: Not more than 4 corners, all in the same town and range, may be recorded on this certificate.

A. Description of original monument and accessories and/or subsequent restoration:

C-1 NE corner of Section 6 & NW corner of Section 5, Polkton Twp.

Original Government Corner Record: L.C.R.C. recorded in Liber 3,

Set post corner secs. 5 & 6 Page 120, 10-21-76:

Post C-1: Set 3/4" pinched iron holding government distance
 Sugar 9 S34E 14 from SW corner of Section 32, T9N, R14 W
 Beech 7 S19W 17 5/8" solid rod W 26.4'
 John Mullett, Deputy Surveyor Center st. sign post N 21.7'
 April 16, 1837 PK in SE side P. Pole SW 73.63'
 (SEE REVERSE) Sq. spike in E'ly side fence post NW 41.71'
 Centerline gravel N 1.7'

B. Description of corner evidence found and/or method applied in restoring or reestablishing corner:

C-1 Found Cast Iron Monument (broken), 2" below surface of gravel road, and accepted as a careful and faithful perpetuation of the position of the original corner.

Found PK nail in SE side of Power Pole S38°W 73.53'(E)
 Found 1/2" Steel Bar, SE corner, Sec. 31, T9N, R14W S90°W 26.34'(not ratified)
 South end, 36" Corrugated Metal Culvert S81°30'E 126.5'
 Centerline gravel road East & West North 2'
 On South line of Section 32, T9N, R14W

PA. 345 OTTAWA COUNTY

PEER APPROVED 12-1-97

YDN

C. Description of monument for corner and accessories established to perpetuate locating the position of the corner:

C-1 Broken Cast Iron Monument, 2" below surface of gravel road.
 Set Ottawa County Remon Tag & nail in South side of 13" Spruce N75°E 187.81'(E)
 Set Ottawa County Remon Tag & nail in North side of Power Pole S78°30'E 291.17'(E)
 Set Ottawa County Remon Tag & nail in SE side of Power Pole S38°W 73.53'(E)
 1/2" Steel Bar, SE corner, Sec. 31, T9N, R14W (not ratified) S90°W 26.34'
 Set Ottawa County Remon Tag & nail in NE side of corner fence post N45°30'W 40.02'(E)
 On centerline gravel road South
 Centerline gravel road East & West, 2' North

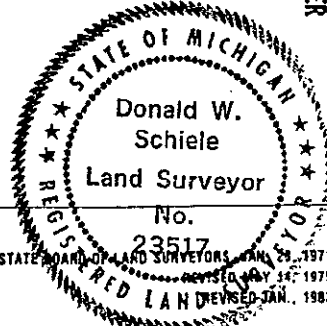
\$ 11.00 CORNER
\$ 2.00 PHOTO

(SEE SKETCH ON REVERSE)

Signed by Donald W. Schiele

Date Dec. 1, 1997

Surveyor's Michigan License No. 23517

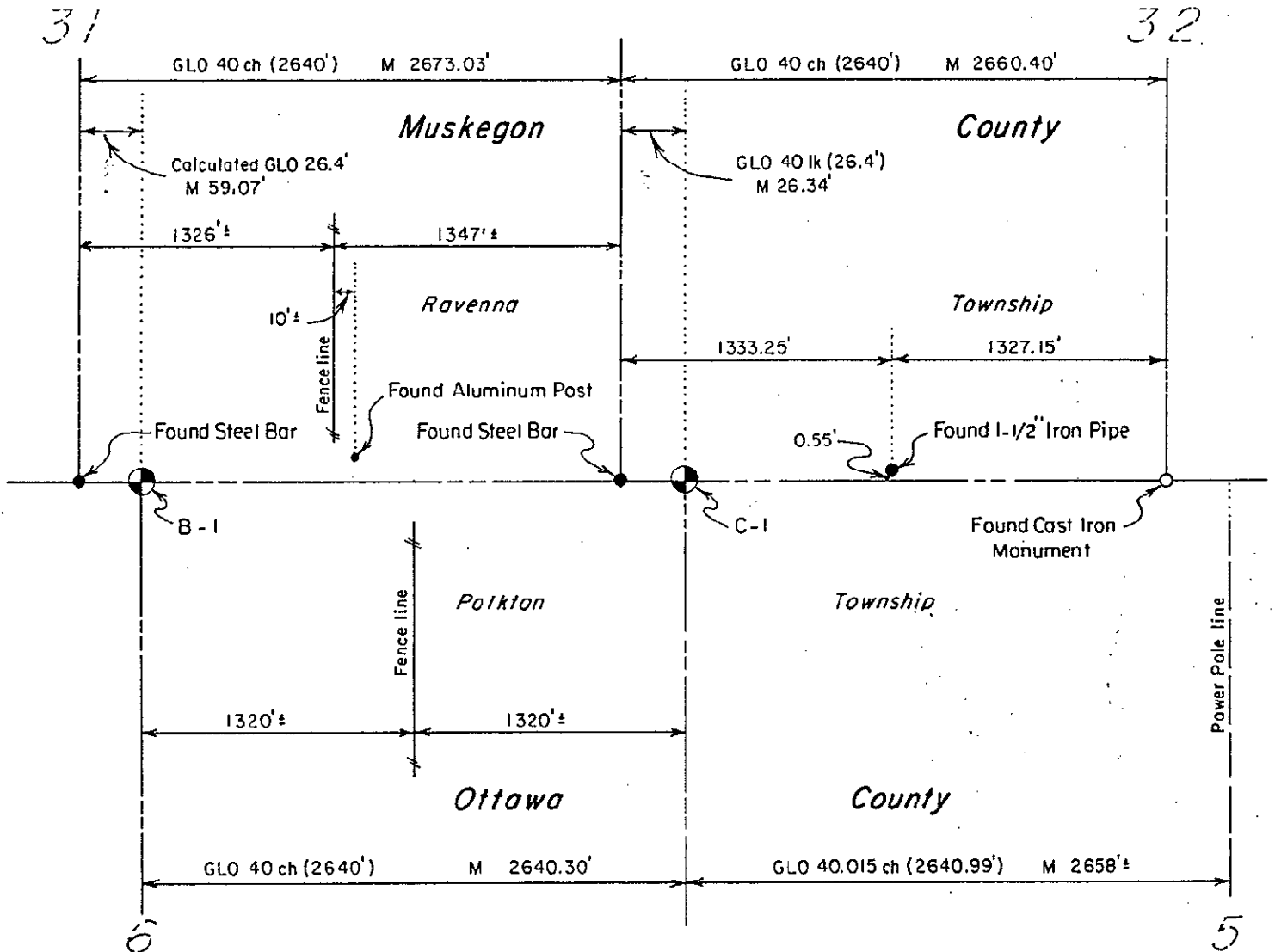


FORM APPROVED BY MICHIGAN STATE BOARD OF LAND SURVEYORS, REVISED MAY 14, 1975

Part A., continued:

L.C.R.C. recorded in Liber 4, Page 100, 8-13-80:

C-1 Set Cast Iron Monument Inscribed "Section Corner"
 C/L Street Sign North 21.82
 C/L Gravel Road North 1.7
 Power Pole SW 73.62
 South End 36" Corr. Culv. ESE 126.39



SURVEY &
 REMONUMENTATION

FEB 27 1998

SECTION