

**SURVEY &
REMONUMENTATION**

APR 24 1995

OTTAWA COUNTY REMONUMENTATION
LAND CORNER RECORDATION CERTIFICATE
Filing Requirement of Act 74, Mich. P.A. 1970

RECORDED

94 DEC 14 AM 9:40

COMMISSION

For corners in

Ottawa County
(County)

Located In:

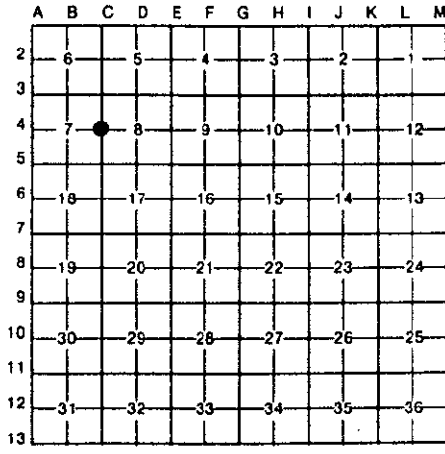
Corner Code #

- | | | | | | |
|------------------------------------|---|----|---|-----|---------------------------|
| 1. Public Land Survey | T | 8N | R | 14W | C-4 (W $\frac{1}{4}$, 8) |
| | T | | R | | Polkton Twp. |
| | T | | R | | |
| | T | | R | | |
| 2. Property Controlling in Section | S | | T | R | |
| | S | | T | R | |
| 3. Miscellaneous Property in Sec. | S | | T | R | |
| | S | | T | R | |
4. Lot No. _____, Recorded Plat _____
5. Private Claims _____

Richard S. Hallman
REGISTER OF DEEDS
OTTAWA COUNTY, MI

Register of Deeds Stamp & File Number

I, Donald W. Schiele, in a field survey on December 10, 19 94 do hereby certify that under requirements of P.A. 74, Michigan P.A. of 1970, the corner points mentioned in lines 1 and 2 above were in conformance with regulations and rules therefore as required in the current manual of survey instructions of the United States Department of the Interior, Bureau of Land Management or by a decree of a Court of Law and/or that the corner points mentioned in lines 3, 4 and 5 above were in conformance with the rules of the Michigan Board of Land Surveyors or by a Decree of a Court of Law: established, re-established, monumented, re-monumented, recovered, found as expressed below:



NOTE: Not more than 4 corners, all in the same town and range, may be recorded on this certificate.

A. Description of original monument and accessories and/or subsequent restoration:

C-4 $\frac{1}{4}$ corner common to Sections 7 & 8, Polkton Twp.

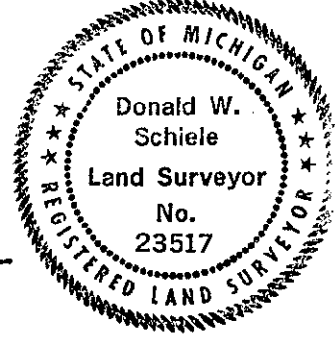
Original Government L.C.R.C. recorded in Liber 2,
Corner Record: Page 67, 2-16-73
Set qr section post 5/8" Rod
between Sec. 7 & 8 East P.P. 40.96'
Post WSW 8" Ash 36.57'
Beech 8 S52W 28 SW 10" Ash 51.85'
Do 10 N39E 18
John Mullett, Deputy Surveyor
April 15, 1837

L.C.R.C. recorded in Liber 4,
Page 99, 8-13-80
Set Cast Iron Monument inscribed
"Section Corner"
Power Pole East 40.55'
13" Ash SW 51.32'
46" Oak West 54.02'
8" Stump WSW 36.69'

B. Description of corner evidence found and/or method applied in restoring or reestablishing corner:

C-4 Found Cast Iron Monument inscribed "Section Corner", 6 $\frac{1}{2}$ " below surface in Monument Box, and accepted as a careful and faithful perpetuation of the position of the original corner.

Found nail & Tag # 18435 in North side of Power Pole	N85°30'E	40.59'
Found nail in North side of Power Pole	N85°30'E	40.62'
Found PK nail in South side of 50" Oak	S87°30'W	55.23'



P.A. 345 OTTAWA COUNTY
PEER APPROVED 12/12/94
Harold P. Newbold

C. Description of monument for corner and accessories established to perpetuate locating the position of the corner:

C-4 Cast Iron Monument inscribed "Section Corner", 6 $\frac{1}{2}$ " below surface in Monument Box.
Set Ottawa County Remon Tag & nail in West side of Power Pole N09°30'E 243.05' (E)
Set Ottawa County Remon Tag & nail in North side of Power Pole N85°30'E 40.53'
Set Ottawa County Remon Tag & nail in West side of Power Pole S09°30'E 244.14' (E)
Set Ottawa County Remon Tag & nail in South side of 50" Oak S87°30'W 55.82'
SW corner, foundation to House # 18055 N11°W 289.78' (E)
Centerline asphalt road North & South, 0.3' East
On occupation line to East
On fence line to West

Signed by Donald W. Schiele Date Dec. 12, 1994
Surveyor's Michigan License No. 23517