

SURVEY & REMONUMENTATION

APR 24 1995

OTTAWA COUNTY REMONUMENTATION
LAND CORNER RECORDATION CERTIFICATE
 Filing Requirement of Act 74, Mich. P.A. 1970

RECORDED

94 DEC 14 AM 9:40

COMMISSION

For corners in

Ottawa
 (County)

Located In:

Corner Code #

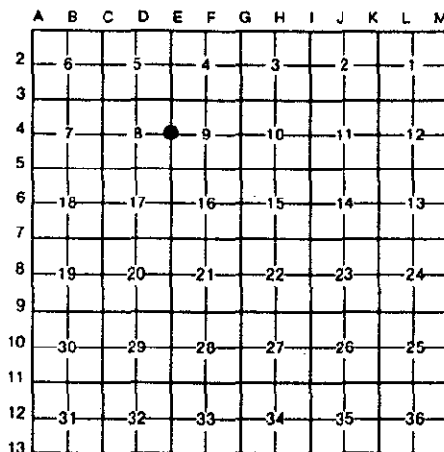
1. Public Land Survey	T 8N R 14W	E-4 (W $\frac{1}{4}$, 9)
	T _____ R _____	Polkton Twp.
	T _____ R _____	_____
	T _____ R _____	_____
2. Property Controlling in Section	S _____ T _____ R _____	_____
	S _____ T _____ R _____	_____
3. Miscellaneous Property in Sec.	S _____ T _____ R _____	_____
	S _____ T _____ R _____	_____

Elizabeth Chittman
 REGISTER OF DEEDS
 OTTAWA COUNTY, MI

Register of Deeds Stamp & File Number

4. Lot No. _____, Recorded Plat _____
 5. Private Claims _____

I, Donald W. Schiele, in a field survey on December 6, 19 94
 do hereby certify that under requirements of P.A. 74, Michigan P.A. of 1970, the corner points mentioned in lines 1 and 2 above were in conformance with regulations and rules therefore as required in the current manual of survey instructions of the United States Department of the Interior, Bureau of Land Management or by a decree of a Court of Law and/or that the corner points mentioned in lines 3, 4 and 5 above were in conformance with the rules of the Michigan Board of Land Surveyors or by a Decree of a Court of Law; established, re-established, monumented, re-monumented, recovered, found as expressed below:



NOTE: Not more than 4 corners, all in the same town and range, may be recorded on this certificate.

A. Description of original monument and accessories and/or subsequent restoration:
 E-4 $\frac{1}{4}$ corner common to Sections 8 & 9, Polkton Twp.

Original Government Corner Record: L.C.R.C. recorded in Liber 4, Page 287, 1-5-82
 Set qr section post between Sec. 8 & 9 Set Cast Iron Monument
 Post NW Tele. Pole 43.25'
 Sugar 6 S21W 22 E Power Pole 53.15'
 Do 7 N17E 05
 John Mullett, Deputy Surveyor
 April 13, 1837

B. Description of corner evidence found and/or method applied in restoring or reestablishing corner:

E-4 Found Cast Iron Monument inscribed "Section Corner", 1 $\frac{1}{2}$ " below surface in Monument Box, and accepted as a careful and faithful perpetuation of the position of the original corner.
 Found nail in North side of Pole S89°30'E 53.15'
 Found nail in SW side of Telephone Pole N44°W 43.22'

P.A. 345 OTTAWA COUNTY
 PEER APPROVED 12/12/94

Medoy P. Nedewold



C. Description of monument for corner and accessories established to perpetuate locating the position of the corner:

E-4 Cast Iron Monument inscribed "Section Corner", 1 $\frac{1}{2}$ " below surface in Monument Box.
 Set Ottawa County Remon Tag & nail in NW side of Power Pole N45°30'E 45.09'
 Set Ottawa County Remon Tag & nail in West side of Power Pole S11°E 199.11'
 Set Ottawa County Remon Tag & nail in East side of Telephone Pole S11°W 164.86'
 Set Ottawa County Remon Tag & nail in NE side of Telephone Pole N44°W 43.17'
 On centerline asphalt road North & South
 On occupation lines East & West

Signed by Donald W. Schiele Date Dec. 12, 1994
 Surveyor's Michigan License No. 23517