

RECORDED

93 DEC 15 AM 9:27

OTTAWA COUNTY REMONUMENTATION
LAND CORNER RECORDATION CERTIFICATE
Filing Requirement of Act 74, Mich. P.A. 1970

Phyllis Ruderman
REGISTER OF DEEDS
OTTAWA COUNTY, MI

For corners in

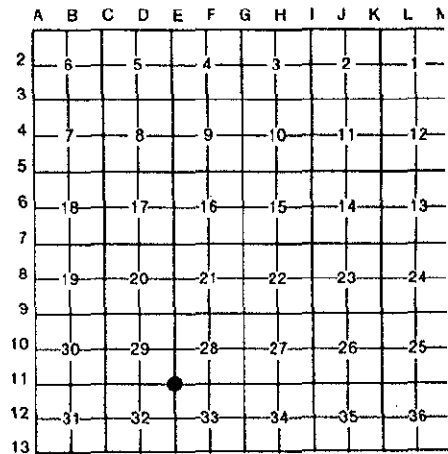
Ottawa (County)	Located In:	Corner Code #
1. Public Land Survey	T <u>8N</u> R <u>14W</u>	<u>E-11 (SW, 28)</u> <u>Polkton Twp.</u>
	T _____ R _____	_____
	T _____ R _____	_____
	T _____ R _____	_____
2. Property Controlling in Section	S _____ T _____ R _____	_____
	S _____ T _____ R _____	_____
3. Miscellaneous Property in Sec.	S _____ T _____ R _____	_____
	S _____ T _____ R _____	_____

Register of Deeds Stamp & File Number

4. Lot No. _____, Recorded Plat _____
5. Private Claims _____

I, Donald W. Schiele, in a field survey on December 4, 19 93, do hereby certify that under requirements of P.A. 74, Michigan P.A. of 1970, the corner points mentioned in lines 1 and 2 above were in conformance with regulations and rules therefore as required in the current manual of survey instructions of the United States Department of the Interior, Bureau of Land Management or by a decree of a Court of Law and/or that the corner points mentioned in lines 3, 4 and 5 above were in conformance with the rules of the Michigan Board of Land Surveyors or by a Decree of a Court of Law; established, re-established, monumented, re-monumented, recovered, found as expressed below:

NOTE: Not more than 4 corners, all in the same town and range, may be recorded on this certificate.



A. Description of original monument and accessories and/or subsequent restoration:

E-11 corner common to Sections 28, 29, 32 & 33, Polkton Twp.	L.C.R.C. recorded in Liber 3, Page 183, 9-16-
L.C.R.C. recorded in Liber 1, Page 577, 8-21-72	C.I.M.
C.I.M. on C.L. Garfield St.	NNE Tel. Ped. 23.53'
On line with fence to South	SW P.P. 108.21'
Power Pole SW 108.11'	S. C.L. 3" Cedar 59.6'
Telephone Box NE 23.51'	

B. Description of corner evidence found and/or method applied in restoring or reestablishing corner:

E-11 Found Cast Iron Monument inscribed "Section Corner" in Monument Box, and accepted as a careful and faithful perpetuation of the position of the original corner.

Centerline 9" Juniper S02°W 59.6'

On line with old fence to South

On centerline Garfield Street

C. Description of monument for corner and accessories established to perpetuate locating the position of the corner:

E-11 Cast Iron Monument inscribed "Section Corner" 4" below surface in Monument Box.

Set Ottawa County Remon Tag & nail in NE side of Power Pole	S48°E	134.16'(E)
Set Ottawa County Remon Tag & nail in East side of 9" Juniper	S02°W	59.65'
Set Ottawa County Remon Tag & nail in NW side of Power Pole	S56°W	156.94'(E)
Chiselled "X" in North end of 18" Concrete Culvert	N80°W	219.93'(E)

On brush row and old fence line to South

On centerline asphalt road East and West

Signed by Donald W. Schiele
Surveyor's Michigan License No. 23517

Date DEC. 6, 1993

