

SURVEY & REMONUMENTATION

APR 24 1995

COMMISSION

OTTAWA COUNTY REMONUMENTATION LAND CORNER RECORDATION CERTIFICATE Filing Requirement of Act 74, Mich. P.A. 1970

RECORDED

94 DEC 14 AM 9:40

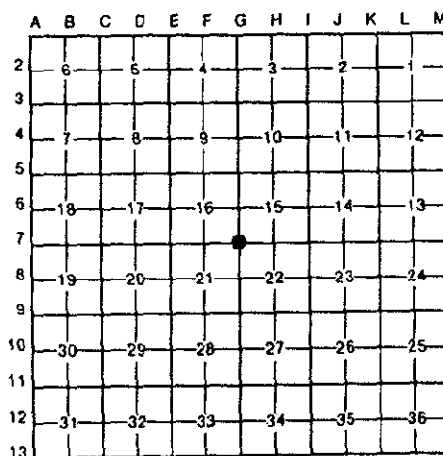
Richard C. Ballman
REGISTER OF DEEDS
OTTAWA COUNTY, MI

For corners in

Ottawa (County)	Located In:	Corner Code #
1. Public Land Survey	T 8N R 14W	G-7 (NW, 22) Polkton Twp.
	T _____ R _____	_____
	T _____ R _____	_____
	T _____ R _____	_____
2. Property Controlling in Section	S _____ T _____ R _____	_____
	S _____ T _____ R _____	_____
3. Miscellaneous Property in Sec.	S _____ T _____ R _____	_____
	S _____ T _____ R _____	_____

Register of Deeds Stamp & File Number

4. Lot No. _____, Recorded Plat _____
5. Private Claims _____



I, Donald W. Schiele, in a field survey on December 6, 19 94, do hereby certify that under requirements of P.A. 74, Michigan P.A. of 1970, the corner points mentioned in lines 1 and 2 above were in conformance with regulations and rules therefore as required in the current manual of survey instructions of the United States Department of the Interior, Bureau of Land Management or by a decree of a Court of Law and/or that the corner points mentioned in lines 3, 4 and 5 above were in conformance with the rules of the Michigan Board of Land Surveyors or by a Decree of a Court of Law; established, re-established, monumented, re-monumented, recovered, found as expressed below:

NOTE: Not more than 4 corners, all in the same town and range, may be recorded on this certificate.

A. Description of original monument and accessories and/or subsequent restoration:

G-7 corner common to Sections 15, 16, 21 & 22, Polkton Twp.
Original Government Corner Record: L.C.R.C. recorded in Liber 6, Page 27, 1-3-90
Set corner post Sec. 15, 16, 21, 22 Set CIM
Post 44" Catalpa NW 86.65'
Beech 16 S49E 34 30" Maple NE 54.50'
Sugar 22 N 9E 28 30" Maple SE 72.50'
John Mullett, Deputy Surveyor PP SW 64.28'
April 11, 1837

3. Description of corner evidence found and/or method applied in restoring or reestablishing corner:

G-7 Found Cast Iron Monument inscribed "Section Corner", 4 1/2" below surface in Monument Box, and accepted as a careful and faithful perpetuation of the position of the original corner.

Found nail in SE side of 38" Maple	N54°E	54.49'
Found nail in SW side of 38" Maple	S23°E	72.50'
Found nail in NW side of Power Pole	S35°30'W	64.30'
Found nail in SW side of 50" Catalpa	N65°W	86.64'

P.A. 345 OTTAWA COUNTY
PEER APPROVED 12/12/94

Richard D. Newell

C. Description of monument for corner and accessories established to perpetuate locating the position of the corner:

G-7 Cast Iron Monument inscribed "Section Corner", 4 1/2" below surface in Monument Box.
Set Ottawa County Remon Tag & nail in SE side of 38" Maple N54°E 54.49'
Set Ottawa County Remon Tag & nail in NE side of 25" Spruce S55°E 89.13'
Set Ottawa County Remon Tag & nail in NW side of Power Pole S35°30'W 64.37'
Set Ottawa County Remon Tag & nail in SW side of 50" Catalpa N65°W 86.32'
Set Ottawa County Remon Tag & nail in NE side of 25" Ash N24°W 89.29'
Centerline gravel road North & South, 1' West
Centerline asphalt road East & West, 0.9' South



Signed by Donald W. Schiele

Date Dec. 12, 1994

Surveyor's Michigan License No. 23517