

1993

COMMISSION

OTTAWA COUNTY REMONUMENTATION  
LAND CORNER RECORDATION CERTIFICATE  
Filing Requirement of Act 74, Mich. P.A. 1970

RECORDED

93 DEC 16 PM 1:01

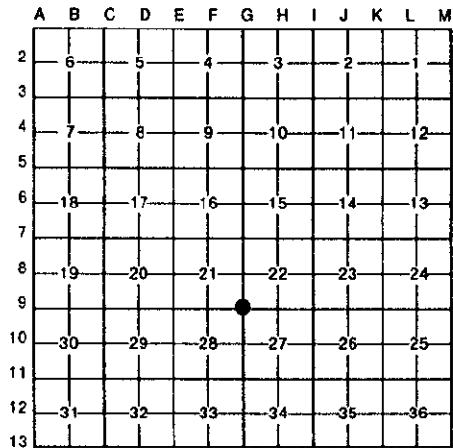
For corners in

*Deborah Redman*  
REGISTER OF DEEDS  
OTTAWA COUNTY, MI

Ottawa (County)	Located In:	Corner Code #
1. Public Land Survey	T 8N R 14W	G-9 (NE, 28) Polkton Twp.
	T _____ R _____	_____
	T _____ R _____	_____
	T _____ R _____	_____
2. Property Controlling in Section	S _____ T _____ R _____	_____
	S _____ T _____ R _____	_____
3. Miscellaneous Property in Sec.	S _____ T _____ R _____	_____
	S _____ T _____ R _____	_____

Register of Deeds Stamp & File Number

4. Lot No. \_\_\_\_\_, Recorded Plat \_\_\_\_\_  
5. Private Claims \_\_\_\_\_



I, Donald W. Schiele, in a field survey on December 4, 19 93, do hereby certify that under requirements of P.A. 74, Michigan P.A. of 1970, the corner points mentioned in lines 1 and 2 above were in conformance with regulations and rules therefore as required in the current manual of survey instructions of the United States Department of the Interior, Bureau of Land Management or by a decree of a Court of Law and/or that the corner points mentioned in lines 3, 4 and 5 above were in conformance with the rules of the Michigan Board of Land Surveyors or by a Decree of a Court of Law; established, re-established, monumented, re-monumented, recovered, found as expressed below:

**NOTE: Not more than 4 corners, all in the same town and range, may be recorded on this certificate.**

A. Description of original monument and accessories and/or subsequent restoration:  
G-9 corner common to Sections 21, 22, 27 & 28, Polkton Twp.

L.C.R.C. recorded in Liber 2, Page 625, 10-9-74 Iron and Stone S 50.90' P.P. N.W. 43.67' P.P. N.E. 100.23' to S.E. Cor. bldg.	L.C.R.C. recorded in Liber 4, Page 304, 4-1-82 C.I.M. Power Pole South 50.86' Tele. Ped. NNW 25.57' SW Cor. Bldg. NNE 82.52' SE Cor. Bldg. NE 100.25'	L.C.R.C. recorded in Liber 5, Page 205, 5-3-85 C.I.M. C.L. Telephone Box NNW 25.5' Nail & B.C. in W side P pole S 50.85 SW cor of bldg (cor of brick) NNE 82.42 SE cor of bldg
--	---	--

Also: See L.C.R.C. recorded in Liber 2, Page 731, 1-14-75.

B. Description of corner evidence found and/or method applied in restoring or reestablishing corner: (cor of brick) NE 100.22  
G-9 Found Cast Iron Monument with top broken off 8" below surface in Monument Box  
2" below surface of asphalt road and accepted as a careful and faithful perpetuation of the position of the original corner.

SW corner brick veneer to Building # 7193	NE	82.41'
SE corner brick veneer to Building # 7193	NE	100.12'
Found PK nail in East side of Power Pole	South	50.91'
Found nail & bottle cap in West side of Power Pole	South	50.90'
Centerline Telephone Pedestal	NNW	25.54'
Found PK nail in East side of Power Pole	N06°W	40.33'

C. Description of monument for corner and accessories established to perpetuate locating the position of the corner:  
G-9 Set 3/4" X 4" solid bar with Ottawa County Remon Cap over broken Cast Iron Monument, 2 1/2" below surface in raised Monument Box.

SW corner brick veneer to Building # 7193	N14°E	82.41'
SE corner brick veneer to Building # 7193	N38°E	100.12'
Set Ottawa County Remon Tag & nail in West side of Power Pole	S01°W	50.90'
Set Ottawa County Remon Tag & nail in East side of Power Pole	N06°W	40.40'
Pole line to North, 4' West		
Centerline asphalt road East & West, 2' South		
On centerline tangent line of asphalt road to West		

Signed by Donald W. Schiele  
Surveyor's Michigan License No. 23517

Date Dec. 6, 1993

