

**SURVEY & REMONUMENTATION**

APR 24 1995

COMMISSION

OTTAWA COUNTY REMONUMENTATION  
**LAND CORNER RECORDATION CERTIFICATE**  
 Filing Requirement of Act 74, Mich. P.A. 1970

RECORDED

94 DEC 15 AM 11:52

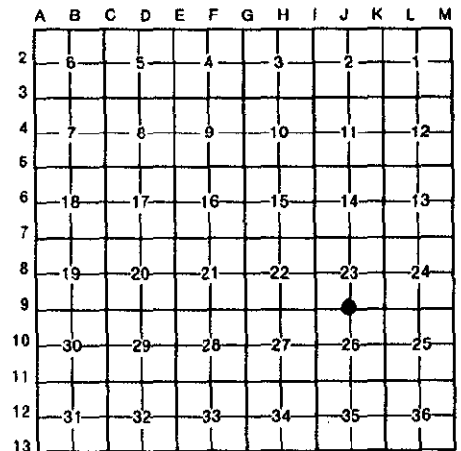
*Phyllis Kellman*  
 REGISTER OF DEEDS  
 OTTAWA COUNTY, MI

For corners in

Ottawa (County)	Located In:	Corner Code #
1. Public Land Survey	T <u>8N</u> R <u>14W</u>	J-9 (S $\frac{1}{4}$ , 23) Polkton Twp.
	T _____ R _____	_____
	T _____ R _____	_____
	T _____ R _____	_____
2. Property Controlling in Section	S _____ T _____ R _____	_____
	S _____ T _____ R _____	_____
3. Miscellaneous Property in Sec.	S _____ T _____ R _____	_____
	S _____ T _____ R _____	_____

Register of Deeds Stamp & File Number

4. Lot No. \_\_\_\_\_, Recorded Plat \_\_\_\_\_  
 5. Private Claims \_\_\_\_\_



I, Donald W. Schiele, in a field survey on December 1, 19 94, do hereby certify that under requirements of P.A. 74, Michigan P.A. of 1970, the corner points mentioned in lines 1 and 2 above were in conformance with regulations and rules therefore as required in the current manual of survey instructions of the United States Department of the Interior, Bureau of Land Management or by a decree of a Court of Law and/or that the corner points mentioned in lines 3, 4 and 5 above were in conformance with the rules of the Michigan Board of Land Surveyors or by a Decree of a Court of Law; established, re-established, monumented, re-monumented, recovered, found as expressed below:

**NOTE: Not more than 4 corners, all in the same town and range, may be recorded on this certificate.**

A. Description of original monument and accessories and/or subsequent restoration:

J-9  $\frac{1}{4}$  corner common to Sections 23 & 26, Polkton Twp.  
 Original Government Corner Record: L.C.R.C. recorded in Liber 1, Page 711, 10-27-72  
 Set qr section post on true line between Sec. 23 & 26  
 Post 1" Pipe in Mon. Box.  
 Pine 18 S76E 09 N.E. P.P. 68.65'  
 Hemlock 6 N75W 11 N.W. T.P. 37.57'  
 John Mullett, Deputy Surveyor S.W. T.P. 42.57'  
 April 9, 1837 S.E. P.P. 38.60'

(SEE REVERSE)

B. Description of corner evidence found and/or method applied in restoring or reestablishing corner:

J-9 Found  $\frac{1}{2}$ " X 18" Steel Bar at road surface, and accepted as a careful and faithful perpetuation of the position of the original corner.  
 Found PK nail in West side of Power Pole N39°30'E 68.74'  
 Found nail in SE side of Power Pole N39°30'E 68.54'  
 Found PK nail in SW side of Power Pole S48°30'E 44.83'  
 Found nail in SE side of Telephone Pole S20°W 56.06'  
 Found PK nail in North side of Power Pole S69°30'W 78.77'  
 Found PK nail in South side of Telephone Pole N69°W 72.99'  
 Found PK nail in East side of Telephone Pole N22°W 37.60'  
 Found nail in East side of Telephone Pole N22°W 37.51'  
 Found nail in East side of 32" Maple N17°W 45.95'



C. Description of monument for corner and accessories established to perpetuate locating the position of the corner:

J-9 Removed  $\frac{1}{2}$ " X 18" Steel Bar and replaced with 3/4" X 24" Steel Bar with Ottawa County Remon Cap, 2" below surface in Monument Box.  
 Set Ottawa County Remon Tag & nail in NW side of Power Pole N39°30'E 68.79'  
 Set Ottawa County Remon Tag & nail in SE side of 20" Maple N68°E 68.66'  
 NW corner, brick face to Building # 20 S46°30'E 84.41'  
 Set Ottawa County Remon Tag & nail in SE side of Telephone Pole S20°W 56.04'  
 Set Ottawa County Remon Tag & nail in NW side of Power Pole S69°30'W 78.87'  
 Set Ottawa County Remon Tag & nail in East side of 32" Maple N17°W 45.42'  
 On centerline asphalt roads Northeast & South  
 Centerline asphalt road East & West, 0.5' South

PEER APPROVED *[Signature]* Date DEC. 12, 1994

Signed by Donald W. Schiele  
 Surveyor's Michigan License No. 23517

PART A. continued:

L.C.R.C. recorded in Liber 1, Page 773, 12-4-72

J-9

Found 1" Pipe in Mon. Box

NE P.P. 68.65'

NW T.P. 37.57'

SW T.P. 42.57'

SE P.P. 38.60'

L.C.R.C. recorded in Liber 3, Page 121, 10-21-76

J-9 Found Solid Iron in Monument Box

Nail in P. Pole SE 38.35'

Nail in T. Pole NW 37.63'

Nail in T. Pole SW 42.76'

L.C.R.C. recorded in Liber 5, Page 21, 3-4-83

J-9

7/2" iron rod

NE 61.25' to PK and flag in S side P.P.

SE 38.39' to PK and flag in NE side PP

SSW 42.80' to PK and flag in W side TP

WSW 78.77' to PK and flag in N side PP

WNW 73.02' to PK and flag in S side TP

NW 37.66' to PK and flag in E side TP