

FEB 24 2000

RECORDED

OTTAWA COUNTY REMONUMENTATION
LAND CORNER RECORDATION CERTIFICATE
Filing Requirement of Act 74, Mich. P.A. 1970

99 SEP 23 PM 3:21

SECTION

For corners in

Ottawa

(County)

Located In:

Corner Code #

Crockery Township

1. Public Land Survey

T8N R15W

C-1

T R

NW corner

T R

Section 5

T R

2. Property Controlling
in Section

S T R

S T R

3. Miscellaneous
Property in Sec.

S T R

S T R

Dany Mullett
REGISTER OF DEEDS
OTTAWA COUNTY, MI

Register of Deeds Stamp & File Number

4. Lot No. _____, Recorded Plat _____

5. Private Claims _____

| | | | | | | | | | | | | | |
|----|---|----|---|----|---|----|---|----|---|----|---|----|---|
| | A | B | C | D | E | F | G | H | I | J | K | L | M |
| 1 | | | 6 | | | | | | | | | | |
| 2 | | 6 | | 5 | | 4 | | 3 | | 2 | | 1 | |
| 3 | | | | | | | | | | | | | |
| 4 | | 7 | | 8 | | 9 | | 10 | | 11 | | 12 | |
| 5 | | | | | | | | | | | | | |
| 6 | | 10 | | 17 | | 16 | | 15 | | 14 | | 13 | |
| 7 | | | | | | | | | | | | | |
| 8 | | 19 | | 20 | | 21 | | 22 | | 23 | | 24 | |
| 9 | | | | | | | | | | | | | |
| 10 | | 30 | | 29 | | 28 | | 27 | | 26 | | 25 | |
| 11 | | | | | | | | | | | | | |
| 12 | | 31 | | 32 | | 33 | | 34 | | 35 | | 36 | |
| 13 | | | | | | | | | | | | | |

I, Carl P. Englert, in a field survey on 6/10, 1999 do hereby state that under requirements of P.A. 74, Michigan P.A. of 1970, the corner points mentioned in lines 1 and 2 above were in conformance with regulations and rules therefore as required in the current manual of survey instructions of the United States Department of the Interior, Bureau of Land Management or by a decree of a Court of Law and /or that the corner points mentioned in lines 3, 4 and 5 above were in conformance with the rules of the Michigan Board of Land Surveyors or by a Decree of a Court of Law, established, re-established, monumented, recovered, found as expressed below:

NOTE: Not more than 2 corners, all in the same town and range, may be recorded on this certificate.

A. Description of original monument and accessories and/or subsequent restoration:

C-1 NW corner Section 5, Common to Southwest corner (C-13) T9N, R15W
John Mullett 1837, Intersected North Boundary at Post
Beech 15" S26°E 10 Links Muskegon County Tie Book (no date)
Found 1 1/4" Iron
E 20" Oak 6.7'
SW 41.45' 10" Maple
S 89°E 24" Oak 6.7'
WSW 80.4' 8" Maple

See Other Side

B. Description of corner evidence found and/or method applied in restoring or reestablishing corner:

C-1 Found 4" Harrison Cast Iron Monument at Grade
Found 36" Oak S89°E 5.41'
Found 12" W. Pine NW 9.63'
Found 12" Maple SW 40.40'
Found 15" Maple SW 79.31'

Accepted as a careful and faithful perpetuation of the original position of the corner.

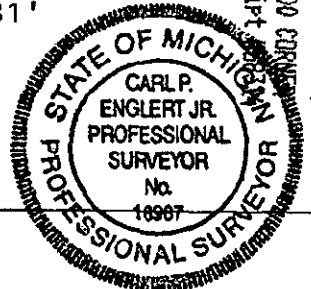
C. Description of monument for corner and accessories established to perpetuate locating the position of the corner:

C-1 4" Harrison Cast Iron Monument
O.C. Remon Tag and Nail in W Side 36" Oak East 5.41'
O.C. Remon Tag and Nail in E Side 12" W. Pine N20°W 9.63'
O.C. Remon Tag and Nail in NE Side 15" Maple S66°W 40.40'
O.C. Remon Tag and Nail in NE Side 15" Maple S41°W 79.31'

9/13/99
YDZ

Signed by Carl P. Englert
Surveyor's Michigan License No. 18987

Date 9/13/1999



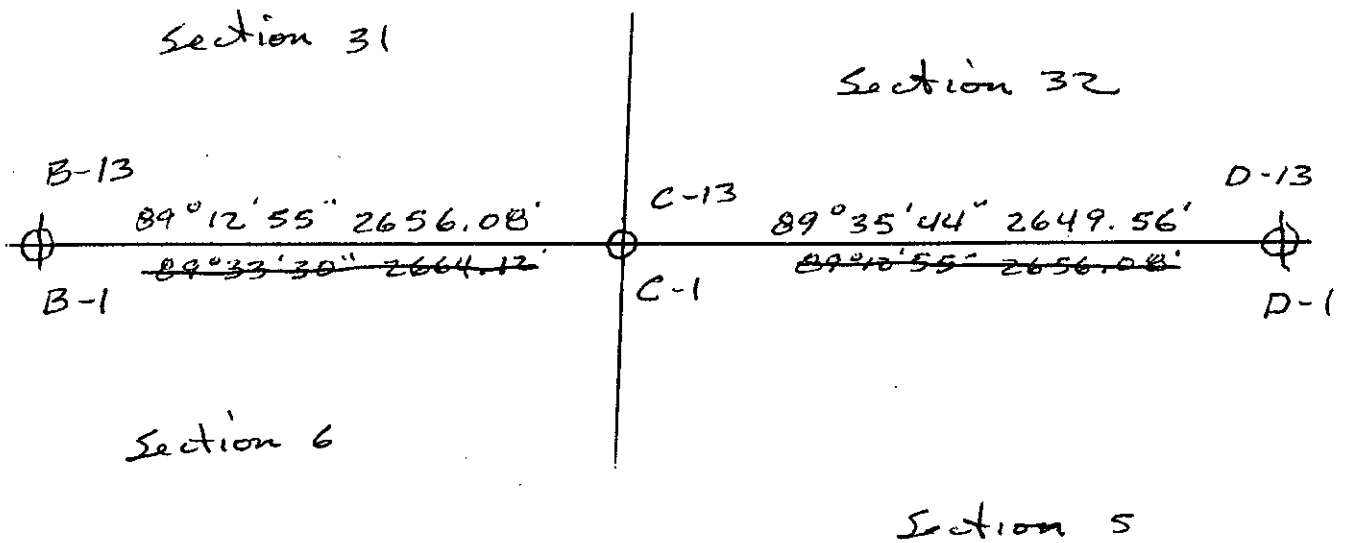
FEB 24 2000

SECTION

C-1, T8N, R15W

LCRC Liber 4, Page 33, Kirk Van Order 1980
Found Stone without Mark
Set Cast Iron Monument
Tie Nail in face of 28" Oak ESE 5.64'
Tie Nail in side of 3" W. Pine NW 9.99'
Tie Nail in face of 12" Maple SW 40.6'
Tie Nail in side of 11" Maple SW 79.9'

T9N, R15W



T8N, R15W