

SURVEY & REMONUMENTATION

APR 05 1996

**OTTAWA COUNTY REMONUMENTATION
LAND CORNER RECORDATION CERTIFICATE**

COMMISSION

Filing Requirement of Act 74, Mich. P.A. 1970

For corners in Ottawa (County)	Located In: Crockery Twp	Corner Code #
1. Public Land Survey	T 8 N R 15 W T _____ R _____ T _____ R _____ T _____ R _____	G - 10 E 1/4 Corner Section 28
2. Property Controlling in Section	S _____ T _____ R _____ S _____ T _____ R _____	
3. Miscellaneous Property in Sec.	S _____ T _____ R _____ S _____ T _____ R _____	

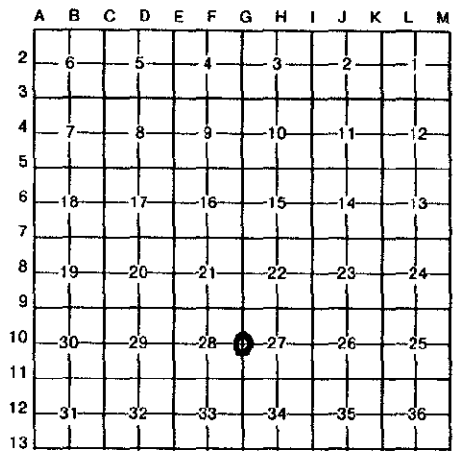
RECORDED

95 DEC 12 AM 11:51

Phyllis Robinson
REGISTER OF DEEDS
OTTAWA COUNTY, MI

Register of Deeds Stamp & File Number

4. Lot No. _____, Recorded Plat _____
5. Private Claims _____



I, Carl P. Englert, Jr., in a field survey on October 18, 19 95, do hereby certify that under requirements of P.A. 74, Michigan P.A. of 1970, the corner points mentioned in lines 1 and 2 above were in conformance with regulations and rules therefore as required in the current manual of survey instructions of the United States Department of the Interior, Bureau of Land Management or by a decree of a Court of Law and/or that the corner points mentioned in lines 3, 4 and 5 above were in conformance with the rules of the Michigan Board of Land Surveyors or by a Decree of a Court of Law; established, re-established, monumented, re-monumented, recovered, found as expressed below:

NOTE: Not more than 4 corners, all in the same town and range, may be recorded on this certificate.

A. Description of original monument and accessories and/or subsequent restoration:

G - 10 1/4 corner common to Sections 27 & 28 Original Corner set March 1832 by John Mullett, D.S. Set 1/4 Section Post Elm 10" N 56° W 19 Links Sugar 8" S 30° E 14 Links	G - 10 3/5/73 Carl Englert Set 5/8" Rod on line between NE corner and SE corner at occupation lines East and West. W. 35.47' 5" Elm E. 38.43' Tele Cable Marker
--	---

see other side

B. Description of corner evidence found and/or method applied in restoring or reestablishing corner:

G - 10 1/4 corner common to Sections 27 & 28
Found CIM in Mon Box 5'± West of CL Asphalt Road
Found 10" Elm West 35.5'±

Also used as the corner in Survey #903 by Joiner Engineering, 7/19/1976.

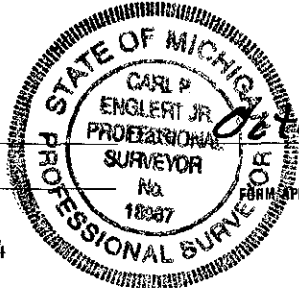
Accepted as a careful and faithful perpetuation of the position of the original corner.

P.A. 345 OTTAWA COUNTY
PEER APPROVED 10/23/95
Andrey D. Nedwell 907

C. Description of monument for corner and accessories established to perpetuate locating the position of the corner:

G - 10 1/4 corner common to Sections 27 & 28
4" CIM in Mon Box
Ottawa County Remonumentation Tag and Nail in S. side 10" Triple Elm S 84° W 35.40'
Ottawa County Remonumentation Tag and Nail in S. side P.P. N 86° W 159.25'
Ottawa County Remonumentation Tag and Nail in N. side P.P. N 60° W 158.92'
Ottawa County Remonumentation Tag and Nail in E. side 24" Hickory N 10° W 324.30'
Ottawa County Remonumentation Tag and Nail in NE side P.P. S 30° E 341.88'

Signed by Carl P. Englert Jr.
Surveyor's Michigan License No. 1B987



October 23, 1995

LCRC Liber 4, Page 28 (1/24/80)

G-11 Found 1" Pipe

Old Ties; (1975)

P.P.

NE Hse. Cor.

⊕ Flag Pole

28" Chinese Elm

E	34.00'
SW	59.17'
W	79.67'
S	3.5' +/-

SURVEY &
REMONUMENTATION

JEC 9 5 2000

SECTION