

**SURVEY &  
REMONUMENTATION**

JUN 28 1999

OTTAWA COUNTY REMONUMENTATION  
LAND CORNER RECORDATION CERTIFICATE  
Filing Requirement of Act 74, Mich. P.A. 1970

RECORDED

98 NOV -4 PM 2:31

For corners in

**SECTION**

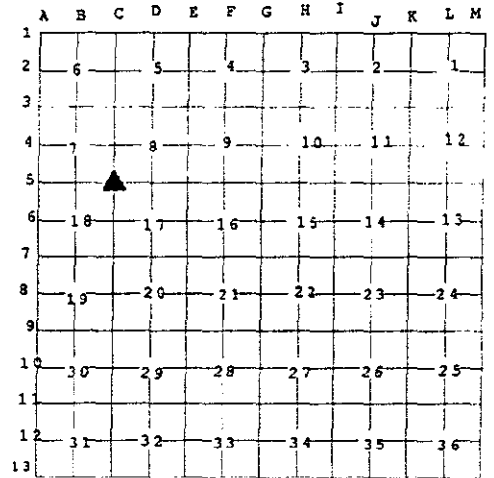
<u>Ottawa</u> (County)	Located In:	Corner Code
1. Public Land Survey	T <u>8N</u> R <u>16W</u>	<u>C-5</u>
	T _____ R _____	<u>(SE 7)</u>
	T _____ R _____	<u>SPRING LAKE TWP</u>
	T _____ R _____	_____
2. Property Controlling in Section	S _____ T _____ R _____	_____
	S _____ T _____ R _____	_____
3. Miscellaneous Property in Sec.	S _____ T _____ R _____	_____
	S _____ T _____ R _____	_____

*Ray Schultz*  
REGISTER OF DEEDS  
OTTAWA COUNTY, MI

Register of Deeds Stamp & File  
Number

4. Lot No. \_\_\_\_\_, Recorded Plat \_\_\_\_\_  
5. Private Claims \_\_\_\_\_

I, Robert E. Lemke, in a field survey on April 14, 1998 do hereby state that under requirements of P.A. 74, Michigan P.A. of 1970, the corner points mentioned in lines 1 and 2 above were in conformance with regulations and rules therefore as required in the current manual of survey instructions of the United States Department of the Interior, Bureau of Land Management or by a decree of a Court of Law and /or that the corner points mentioned in lines 3, 4 and 5 above were in conformance with the rules of the Michigan Board of Land Surveyors or by a Decree of a Court of Law; established, re-established, monumented, recovered, found as expressed below:



**NOTE:** Not more than 2 corners, all in the same town and range, may be recorded on this certificate.

A. Description of original monument and accessories and/or subsequent restoration:  
( see back of page )

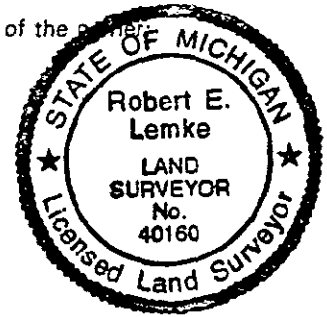
B. Description of corner evidence found and/or method applied in restoring or reestablishing corner:

C-5  
found cast iron monument and old concrete monument on ground  
witness's per (liber 5, page 54)  
6" quad Oak S 5° W 35.05' (m=36.80') to Nail  
14" Tw Cherry S 30° W 72.20' (m=72.50') to Nail  
10" Tw. Oak S 54° E 53.05' (m=53.50') to Nail  
And is accepted as a careful and faithful perpetuation of the position of the original corner.

10/19/98  
*RDZ*

C. Description of monument for corner and accessories established to perpetuate locating the position of the corner:

C-5  
Cast Iron Monument  
Set O.C. Remon. Nail & tag E. side 36" Quad Oak S 15° W 36.90'  
Set O.C. Remon. Nail & tag W. side 36" Twin Oak S 35° E 53.55'  
Set O.C. Remon. Nail & tag NW side 10" Maple S 73° W 47.80'  
Set O.C. Remon. Nail & tag W. side 3" Cherry N 10° E 21.35'  
Set O.C. Remon. Nail & tag SW side 12" Cherry N 30° W 85.30'



APPROVED REMONUMENTATION CORNER  
P.A.345 OF 1990  
OTTAWA COUNTY

DATE APPROVED \_\_\_\_\_

COUNTY REP. \_\_\_\_\_

Date

4/14/98  
#11.00 CORNER  
Receipt #18213  
\$2.00 PHOTO  
Receipt #00113

Signed by Robert E. Lemke  
SDI Consultants, Ltd.  
Surveyor's Michigan License No. 40160

A: Description of original monument and accessories and / or subsequent restoration: C-5 continued

C-5  
GLO May 1832  
North between sections 17 and 18  
80.00 chains  
Set post corner sec 7,8,17,18  
Hemlock 9" S 86° W 09 lks  
Beech 10" N 53° E 28 lks

C-5  
County Surveyor notes  
1964 SE corner Section 7  
Found Brick & Placed Iron  
Sign Post SE 43.1'  
3" Sass NE 48.3'  
SW to CL 6" B. Oak 35.9'  
NW to 6" W. Oak 59.2'  
SE to CL 4" Sass 74.4'

C-5  
LCRC (liber 5, page 54)  
T.E. Joiner, May 17, 1983  
Found concrete monument  
Sign Post SE 43.1'  
3" Sassafras NE 48.3'  
6" Blk Oak SW 25.9'  
6" White Oak NW 59.2'  
Part C  
Set cast iron monument  
6" Cherry N 40° W 52.00'  
6" Quad Oak S 5° W 35.05'  
14" Tw. Cherry S 30° W 72.20'  
10" Tw. Oak S 54° E 53.05'

SURVEY &  
REMONUMENTATION

JUN 28 1999

SECTION