

SURVEY & REMONUMENTATION

APR 05 1996

COMMISSION

OTTAWA COUNTY REMONUMENTATION
LAND CORNER RECORDATION CERTIFICATE
 Filing Requirement of Act 74, Mich. P.A. 1970

For corners in

Ottawa (County)	Located In:	Corner Code ##
1. Public Land Survey	T <u>8N</u> R <u>16W</u>	<u>E-6, E$\frac{1}{2}$ corner</u> <u>Section 17</u> <u>Spring Lake Twp</u>
	T _____ R _____	_____
	T _____ R _____	_____
	T _____ R _____	_____
2. Property Controlling in Section	S _____ T _____ R _____	_____
	S _____ T _____ R _____	_____
3. Miscellaneous Property in Sec.	S _____ T _____ R _____	_____
	S _____ T _____ R _____	_____

RECORDED

95 NOV 29 PM 1:33

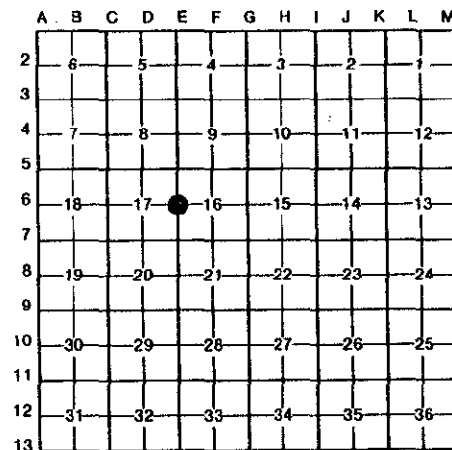
D. J. ...
 REGISTER OF DEEDS
 OTTAWA COUNTY, MI

Register of Deeds Stamp & File Number

4. Lot No. _____, Recorded Plat _____
 5. Private Claims _____

I, Thomas E. Joiner, in a field survey on 11-9-, 19 95, do hereby certify that under requirements of P.A. 74, Michigan P.A. of 1970, the corner points mentioned in lines 1 and 2 above were in conformance with regulations and rules therefore as required in the current manual of survey instructions of the United States Department of the Interior, Bureau of Land Management or by a decree of a Court of Law and/or that the corner points mentioned in lines 3, 4 and 5 above were in conformance with the rules of the Michigan Board of Land Surveyors or by a Decree of a Court of Law; established, re-established, monumented, re-monumented, recovered, found as expressed below:

NOTE: Not more than 4 corners, all in the same town and range, may be recorded on this certificate.



A. Description of original monument and accessories and/or subsequent restoration:

03-30-1837	Liber 3, Page 192	09-23-77
Post Set By J. Mullett	Found Iron Pipe	
S 57°E 18 15" Beech	Set Cast Iron Monument	
N 05°E 10 24" Elm	NW 27.47 10" Jack Pine	
	S 23.73 12" Oak	
	N 24.10 10" Black Cherry	
	SW 1.82 6" Dead Tree	
	NNW 19.45 12" Oak	

B. Description of corner evidence found and/or method applied in restoring or reestablishing corner:

Found Cast Iron Monument in Monument Box and accepted as a careful and faithful perpetuation of the position of the original corner.

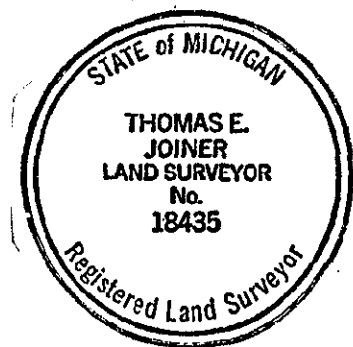
Liber 3, Page 192
 Intersection of Fence Lines

P.A. 345 OTTAWA COUNTY
 PEER APPROVED 11/20/95

Kendy P. McDowell
LDJ

C. Description of monument for corner and accessories established to perpetuate locating the position of the corner:

Cast Iron Monument		
O.C. Remon Tag & Nail in E side of Power Pole	AZ 185°	97.92
NW corner of Block Foundation	AZ 85°	90.0
Top Operating Bolt on Hydrant	AZ 40°	188.47
Top Operating Bolt on Hydrant	AZ 147°	82.20



Signed by Thomas E. Joiner
 Surveyor's Michigan License No. 18435

Date 11-16-95