

RECORDED

97 JUL 24 PM 2:25

OTTAWA COUNTY REMONUMENTATION  
LAND CORNER RECORDATION CERTIFICATE  
Filing Requirement of Act 74, Mich. P.A. 1970

*Thomas E. Joiner*  
REGISTER OF DEEDS  
OTTAWA COUNTY, MI

SURVEY &  
REMONUMENTATION

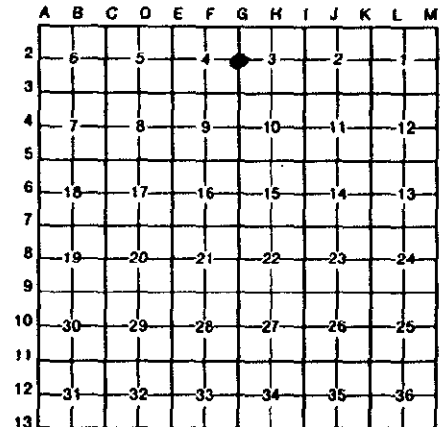
JEC 05 2000

Register of Deeds Stamp & File Number

For corners in

Ottawa (County)	Located In:	Corner Code #
1. Public Land Survey	T <u>8N</u> R <u>16W</u>	<u>G-2, W<math>\frac{1}{2}</math> corn.</u>
	T _____ R _____	<u>Section 3</u>
	T _____ R _____	<u>Spring Lake Twp</u>
	T _____ R _____	_____
2. Property Controlling In Section	S _____ T _____ R _____	_____
	S _____ T _____ R _____	_____
3. Miscellaneous Property in Sec.	S _____ T _____ R _____	_____
	S _____ T _____ R _____	_____

4. Lot No. \_\_\_\_\_, Recorded Plat \_\_\_\_\_  
5. Private Claims \_\_\_\_\_



I, Thomas E. Joiner, in a field survey on April 7, 19 97, do hereby certify that under requirements of P.A. 74, Michigan P.A. of 1970, the corner points mentioned in lines 1 and 2 above were in conformance with regulations and rules therefore as required in the current manual of survey instructions of the United States Department of the Interior, Bureau of Land Management or by a decree of a Court of Law and/or that the corner points mentioned in lines 3, 4 and 5 above were in conformance with the rules of the Michigan Board of Land Surveyors or by a Decree of a Court of Law; established, re-established, monumented, re-monumented, recovered, found as expressed below:

**NOTE: Not more than 4 corners, all in the same town and range, may be recorded on this certificate.**

A. Description of original monument and accessories and/or subsequent restoration:

G-2 Spring Lake Township  
Calvin Britain D.S.  
April 1, 1837  
Set Quarter Section Post  
Hemlock 12" S 47° E 06 Links  
Hemlock 10" S 78° W 23 Links

Liber 1 Page 715  
Gas Pipe  
4-12-62 G.G.  
Pine N 31° W 30.5'  
Pine S 79° W 49'  
W 22:30 E 53.16' 6" Ironwood  
S 61° E 34.40' 12" Maple

Liber 1 Page 715 cont.  
Found Boat Spike  
NW Power Pole 69.45'  
SW Power Pole 62.78'  
SE 20" Maple 34.75'

SEE REVERSE SIDE

B. Description of corner evidence found and/or method applied in restoring or reestablishing corner:

G-2 Spring Lake Township  
Found cast iron monument in box and accepted as a careful and faithful perpetuation of the position of the original corner.

Liber 1 Page 715  
Boat Spike  
NW Power Pole 69.45'  
SW Power Pole 62.78'

Liber 5 Page 132  
Set C.I.M.  
20" Maple SE 66.30'  
Power Pole NE 70.43'  
Power Pole NW 70.12'  
Guy Pole SW 62.80'

Liber 5 Page 153-A  
NE 70.48 to nail in NW side of pole  
SE 66.31 to nail in NE side of 26" Maple  
NW 70.13 to nail in SW side of Power Pole

PA. 345 OTTAWA COUNTY

PEER APPROVED 4-21-97 *T.E.J.*

C. Description of monument for corner and accessories established to perpetuate locating the position of the corner:

G-2 Spring Lake Township  
Found cast iron monument in box  
O.C. Remon tag & nail in S side power pole AZ 43° Dist. 70.35'  
O.C. Remon tag & nail in NE side 30" Maple AZ 128° Dist. 66.30'  
O.C. Remon tag & nail in SE side guy pole AZ 215° Dist. 62.83'  
G, Top operating bolt of hydrant AZ 310° Dist. 49.84'



Signed by Thomas E. Joiner  
Surveyor's Michigan License No. 18435

Date 4-8-97

SURVEY &  
REMONUMENTATION

DEC 6 5 2000

A. continued

Liber 5 Page 132  
Set C.I.M.  
20" Maple SE 66.30'  
Power Pole NE 70.43'  
Power Pole NW 70.12'  
Guy Pole SW 62.80'

SECTION

Liber 5 Page 153-A  
F.C.I.M.  
NE 70.48' to nail in NW side of Power Pole  
SE 66.31' to nail in NE side of 26" Maple  
SW 64.82' to nail in NW side of Power Pole  
NW 70.13' to Nail in SW side of Power Pole