

SURVEY & REMONUMENTATION

APR 24 1995

COMMISSION

**OTTAWA COUNTY REMONUMENTATION
LAND CORNER RECORDATION CERTIFICATE
Filing Requirement of Act 74, Mich. P.A. 1970**

RECORDED

94 DEC 15 AM 11:45

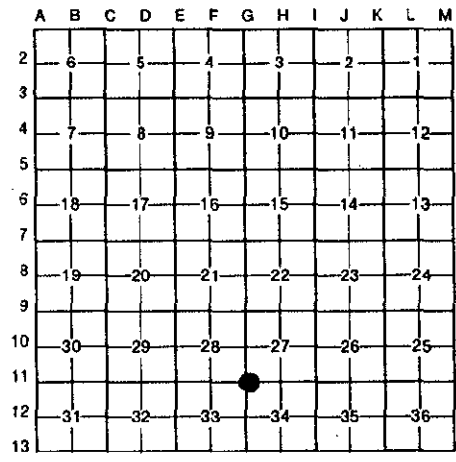
D. J. ...
REGISTER OF DEEDS
OTTAWA COUNTY, MI

For corners in

Ottawa (County)	Located In:	Corner Code #
1. Public Land Survey	T 8N R 16W	G-11 SW Cor.
	T _____ R _____	Section 27
	T _____ R _____	Spring Lake Twp
	T _____ R _____	
2. Property Controlling in Section	S _____ T _____ R _____	
	S _____ T _____ R _____	
3. Miscellaneous Property in Sec.	S _____ T _____ R _____	
	S _____ T _____ R _____	

Register of Deeds Stamp & File Number

4. Lot No. _____, Recorded Plat _____
5. Private Claims _____



I, THOMAS E. JOINER in a field survey on 11-29-94, 19 94, do hereby certify that under requirements of P.A. 74, Michigan P.A. of 1970, the corner points mentioned in lines 1 and 2 above were in conformance with regulations and rules therefore as required in the current manual of survey instructions of the United States Department of the Interior, Bureau of Land Management or by a decree of a Court of Law and/or that the corner points mentioned in lines 3, 4 and 5 above were in conformance with the rules of the Michigan Board of Land Surveyors or by a Decree of a Court of Law; established, re-established, monumented, re-monumented, recovered, found as expressed below:

NOTE: Not more than 4 corners, all in the same town and range, may be recorded on this certificate.

A. Description of original monument and accessories and/or subsequent restoration:		
05-26-1832	Liber 5, Pg. 263, 01-16-87	Liber 1, Pg. 653, 10-13-72
Post Set by John Mullet	Set Cast Iron Monument	Found 1 1/2" Bar in Mon. Box
N 78°W 10 8" Hemlock	NW 61.59 ⊗ Top Hydrant	SW 51.09 Light Support Pole
S 52°E 8 5" Pine	SW 51.43 PK North side Light Pole	NW 61.66 ⊗ Hydrant
	SE 50.28 ⊗ Top Hydrant	NE 68.73 Power Pole
	ESE 73.48 PK W side Power Pole	SE 73.78 Power Pole
	ENE 67.03 PK W side Power Pole	
	NE 77.57 SW cor. Brick Bldg. face	
	NNE 60.12 PK South side 12" Maple	

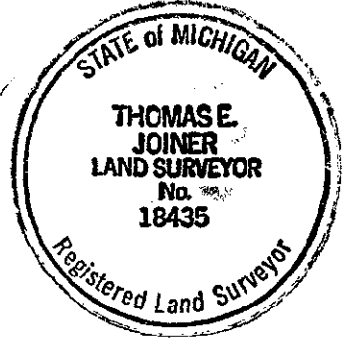
B. Description of corner evidence found and/or method applied in restoring or reestablishing corner:
Found Cast Iron Monument in Monument Box and accepted as a careful and faithful perpetuation of the position of the original corner.

Liber 5, Pg. 263, 01-16-87	Liber 1, Pg. 653, 10-13-72
NW 61.59 ⊗ Top Hydrant	NW 61.66 ⊗ Hydrant
SE 50.28 ⊗ Top Hydrant	NE 68.73 Power Pole
ESE 73.48 PK W side Power Pole	SE 73.78 Power Pole
ENE 67.03 PK W side Power Pole	
NE 77.57 SW cor. Brick Bldg. face	
NNE 60.12 PK S side 12" Maple	

PA. 345 OTTAWA COUNTY
PEER APPROVED 12/12/94

C. Description of monument for corner and accessories established to perpetuate locating the position of the corner:
Cast Iron Monument in Monument Box

SW Cor. Brick Bldg. #1720	Az. 58° 77.53
⊗ Top Operating Nut on Hydrant	Az. 148° 50.28
Center of MH Cover	Az. 226° 50.45
⊗ Top Operating Nut on Hydrant	Az. 294° 61.58



Signed by Thomas E. Joiner Date 12-12-94
Surveyor's Michigan License No. 18435