

**OTTAWA COUNTY REMONUMENTATION
LAND CORNER RECORDATION CERTIFICATE
Filing Requirement of Act 74, Mich. P.A. 1970**

For corners in

| | | |
|---------------------------------------|------------------------------------|-----------------------|
| <u>Ottawa</u> (County) | Located In: Grand Haven City | Corner Code # H-9 |
| 1. Public Land Survey | T <u>8</u> N R <u>16</u> W | <u>Reference mon.</u> |
| | T ___ R ___ | <u>to Meander</u> |
| | T ___ R ___ | <u>Post and N.</u> |
| 2. Property Controlling in Section | S ___ T ___ R ___ | <u>1/4 corner of</u> |
| | S ___ T ___ R ___ | <u>Section 27</u> |
| 3. Miscellaneous Property in Sec. | S ___ T ___ R ___ | _____ |
| | S ___ T ___ R ___ | _____ |

RECORDED

96 DEC 20 PM 12:20

Dorothy Redman
REGISTER OF DEEDS
OTTAWA COUNTY, MI

Register of Deeds Stamp & File Number

4. Lot No. _____, Recorded Plat _____
5. Private Claims _____

I, Carl P. Englert, in a field survey on 11/25, 1996 do hereby state that under requirements of P.A. 74, Michigan P.A. of 1970, the corner points mentioned in lines 1 and 2 above were in conformance with regulations and rules therefore as required in the current manual of survey instructions of the United States Department of the Interior, Bureau of Land Management or by a decree of a Court of Law and/or that the corner points mentioned in lines 3, 4 and 5 above were in conformance with the rules of the Michigan Board of Land Surveyors or by a Decree of a Court of Law; established, re-established, monumented, recovered, found as expressed below:

NOTE: Not more than 2 corners, all in the same town and range, may be recorded on this certificate.

| | | | | | | | | | | | | | |
|----|---|----|---|----|---|----|---|-----|---|----|---|----|---|
| 1 | A | B | C | D | E | F | G | H | I | J | K | L | M |
| 2 | | 6 | | 5 | | 4 | | 3 | | 2 | | 1 | |
| 3 | | | | | | | | | | | | | |
| 4 | | 7 | | 8 | | 9 | | 10 | | 11 | | 12 | |
| 5 | | | | | | | | | | | | | |
| 6 | | 18 | | 17 | | 16 | | 15 | | 14 | | 13 | |
| 7 | | | | | | | | | | | | | |
| 8 | | 19 | | 20 | | 21 | | 22 | | 23 | | 24 | |
| 9 | | | | | | | | * ⊕ | | | | | |
| 10 | | 30 | | 29 | | 28 | | 27 | | 26 | | 25 | |
| 11 | | | | | | | | | | | | | |
| 12 | | 31 | | 32 | | 33 | | 34 | | 35 | | 36 | |
| 13 | | | | | | | | | | | | | |

A. Description of original monument and accessories and/or subsequent restoration:

H-9 1/4 corner common to Sections 22 & 27
G.L.O. Mullett 1837
East Corrected between 22 & 27 (Runs East from 1832 Meander Post)
10.40 over to Island and Set post in Marsh. No trees.
50.40 Section Corner

P.A. 345 OTTAWA COUNTY
PEER APPROVED 12-9-96

B. Description of corner evidence found and/or method applied in restoring or reestablishing corner:

H-9 1/4 corner common to Sections 22 & 27
Corner and Meander Post lost
Established Meander Post on line from G-9 to existing Iron Stakes
along Section line
Established H-9 by Single Prop. Measurement between 1832 Meander
Post and I-9

See Other Side

Accepted as a careful and faithful reestablishment of the position of the original corner.

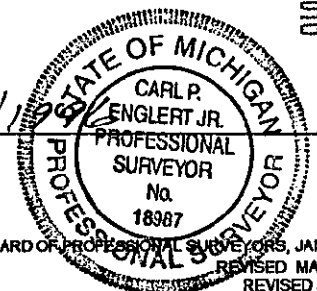
C. Description of monument for corner and accessories established to perpetuate locating the position of the corner:

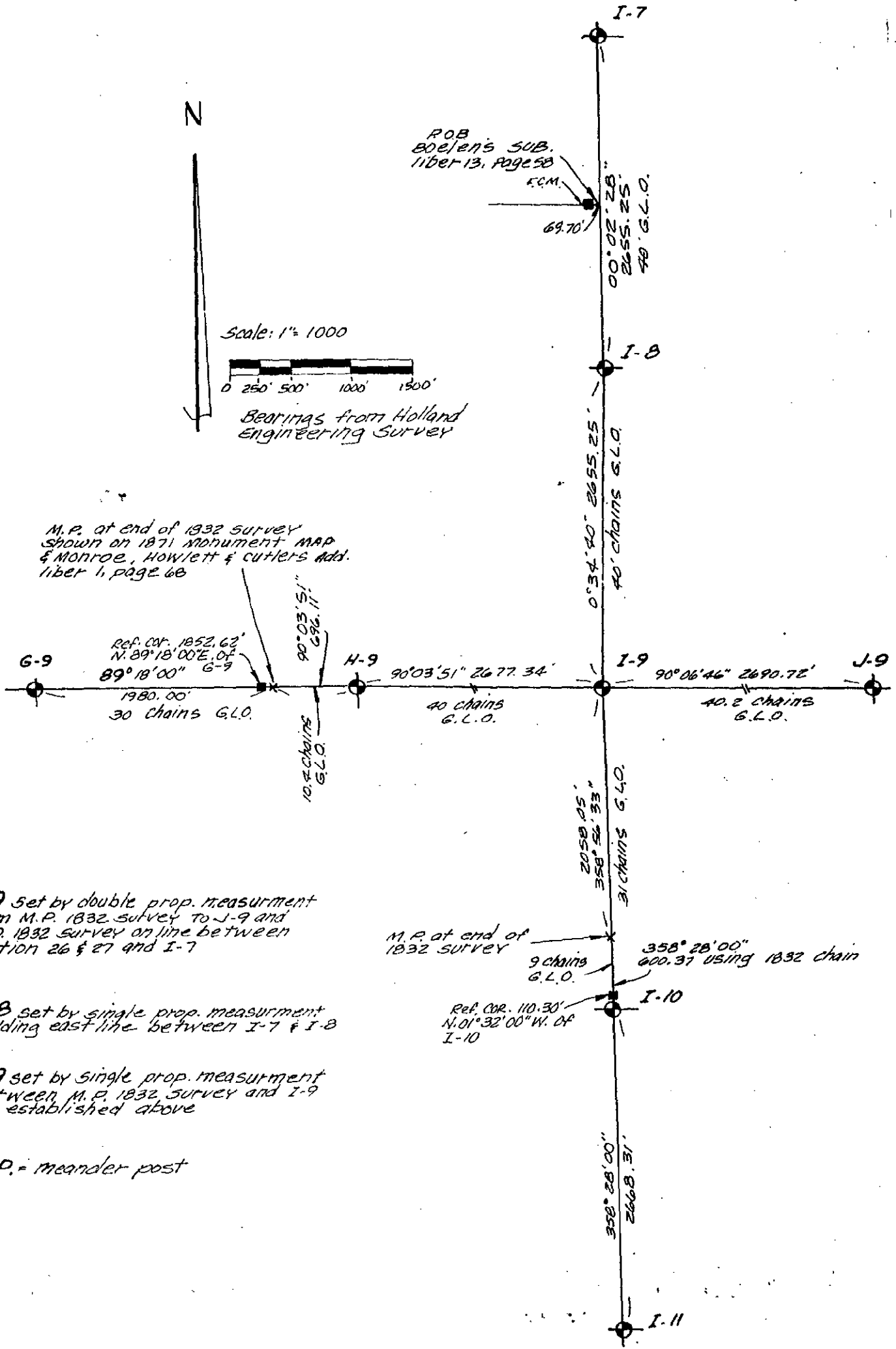
H-9 1/4 corner common to Sections 22 & 27
Reference corner to 1832 Meander Post and H-9, Set 3/4"x3' Iron Bar
with O.C. Remon Cap.
O.C. Remon Nail & Tag in E. Side 50" Oak S6°W 61.31'
O.C. Remon Nail & Tag in S. Side Guy Pole S64°W 72.61'
O.C. Remon Nail & Tag in S. Side 50" Oak N75°W 70.02'
Near corner Concrete Step Hse #1809 N6°E 24.08'
SW corner Hse #1809 foundation N75°E 33.78'
Reference Mon. 1.3' SW of Edge of Sidewalk 6" deep

\$ 11.00 CORNER
\$ 1.00 PHOTO
\$ 1.00 PHOTO

Signed by Carl P. Englert
Surveyor's Michigan License No. 18987

Date 12/13/1996





I-9 set by double prop. measurement from M.P. 1832 survey to J-9 and M.P. 1832 survey on line between section 26 & 27 and I-7

I-8 set by single prop. measurement holding east line between I-7 & I-8

I-9 set by single prop. measurement between M.P. 1832 survey and I-9 as established above

M.P. = meander post