

**OTTAWA COUNTY REMONUMENTATION  
LAND CORNER RECORDATION CERTIFICATE**  
Filing Requirement of Act 74, Mich. P.A. 1970

For corners in  
Ottawa  
(County)

Located In: Spring Lake  
Twp. Corner Code #

|                                       |                          |                           |
|---------------------------------------|--------------------------|---------------------------|
| 1. Public Land Survey                 | T <u>8N</u> R <u>16W</u> | <u>I-8</u>                |
|                                       | T ___ R ___              | Reference Mon.            |
|                                       | T ___ R ___              | to E $\frac{1}{4}$ corner |
|                                       | T ___ R ___              | Section 22 and            |
|                                       | T ___ R ___              | SE corner                 |
| 2. Property Controlling<br>in Section | S ___ T ___ R ___        | Section 22                |
|                                       | S ___ T ___ R ___        | (I-9)                     |
| 3. Miscellaneous<br>Property in Sec.  | S ___ T ___ R ___        |                           |

**RECORDED**  
96 DEC 20 PM 12: 20

*Register of Deeds*  
REGISTER OF DEEDS  
OTTAWA COUNTY, MI

Register of Deeds Stamp & File Number

4. Lot No. \_\_\_\_\_, Recorded Plat \_\_\_\_\_  
5. Private Claims \_\_\_\_\_

|    |    |   |    |   |    |   |    |   |    |   |    |   |   |
|----|----|---|----|---|----|---|----|---|----|---|----|---|---|
|    | A  | B | C  | D | E  | F | G  | H | I  | J | K  | L | M |
| 1  |    |   |    |   |    |   |    |   |    |   |    |   |   |
| 2  | 6  |   | 5  |   | 4  |   | 3  |   | 2  |   |    |   |   |
| 3  |    |   |    |   |    |   |    |   |    |   |    |   |   |
| 4  | 7  |   | 8  |   | 9  |   | 10 |   | 11 |   | 12 |   |   |
| 5  |    |   |    |   |    |   |    |   |    |   |    |   |   |
| 6  | 18 |   | 17 |   | 16 |   | 15 |   | 14 |   | 13 |   |   |
| 7  |    |   |    |   |    |   |    |   |    |   |    |   |   |
| 8  | 19 |   | 20 |   | 21 |   | 22 | * | 23 |   | 24 |   |   |
| 9  |    |   |    |   |    |   |    |   |    |   |    |   |   |
| 10 | 30 |   | 29 |   | 28 |   | 27 |   | 26 |   | 25 |   |   |
| 11 |    |   |    |   |    |   |    |   |    |   |    |   |   |
| 12 | 31 |   | 32 |   | 33 |   | 34 |   | 35 |   | 36 |   |   |
| 13 |    |   |    |   |    |   |    |   |    |   |    |   |   |

I, Carl P. Englert, in a field survey on 12/12, 1996 do hereby state that under requirements of P.A. 74, Michigan P.A. of 1970, the corner points mentioned in lines 1 and 2 above were in conformance with regulations and rules therefore as required in the current manual of survey instructions of the United States Department of the Interior, Bureau of Land Management or by a decree of a Court of Law and/or that the corner points mentioned in lines 3, 4 and 5 above were in conformance with the rules of the Michigan Board of Land Surveyors or by a Decree of a Court of Law; established, re-established, monumented, recovered, found as expressed below:

NOTE: Not more than 2 corners, all in the same town and range, may be recorded on this certificate.

A. Description of original monument and accessories and/or subsequent restoration:

I-8 1/4 corner common to Sections 22 & 23  
G.L.O. 1837 Mullett  
40.00 1/4 Section corner in Bayou

P.A. 345 OTTAWA COUNTY  
PEER APPROVED 12.9.96

*J. D. M.*

B. Description of corner evidence found and/or method applied in restoring or reestablishing corner:

I-8 1/4 corner common to Sections 22 & 23  
Corner is lost  
Established corner 1/2 distance between I-7 and I-9 on the Southerly extension of a line from I-7 to the East line of Boelen's Subdivision, L. 13, P. 58.  
See Other Side

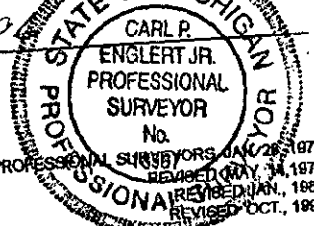
Accepted as a careful and faithful reestablishment of the position of the original corner.

C. Description of monument for corner and accessories established to perpetuate locating the position of the corner:

I-8 1/4 corner common to Sections 22 & 23  
Reference Monument to I-8 & I-9  
Set 3/4"x3' long Iron Bar with O.C. Remon Cap 6" deep  
O.C. Remon tag & nail in W. Side P.P. N160E 72.84'  
O.C. Remon tag & nail in S.E. Side 20" Maple N390E 54.30'  
O.C. Remon tag & nail in N.W. Side 30" Maple S300W 3.77'  
O.C. Remon tag & nail in N.E. Side 26" Catalpa S600E 25.74'  
Top Center Hydrant N640W 67.07'

\$ 11.00 CORNER  
\$ 1.00 PHOTO  
\$ 1.00 PHOTO

Signed by Carl P. Englert Jr.  
Surveyor's Michigan License No. 18987

Date 12/13/1996  


FORM APPROVED BY MICHIGAN STATE BOARD OF PROFESSIONAL SURVEYORS, JAN 28, 1971  
REVISED MAY 14, 1975  
REVISED JAN., 1983  
REVISED OCT., 1985

N

P.O.B.  
Boelen's SUB.  
Liber 13, Page 58

E.C.M.

Ref. Mon. 1392.00'  
S. 00° 02' 28" W. of I-7

69.70'

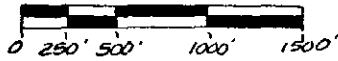
I-7

00° 02' 28"  
2655.25'  
40' G.L.O.

I-8

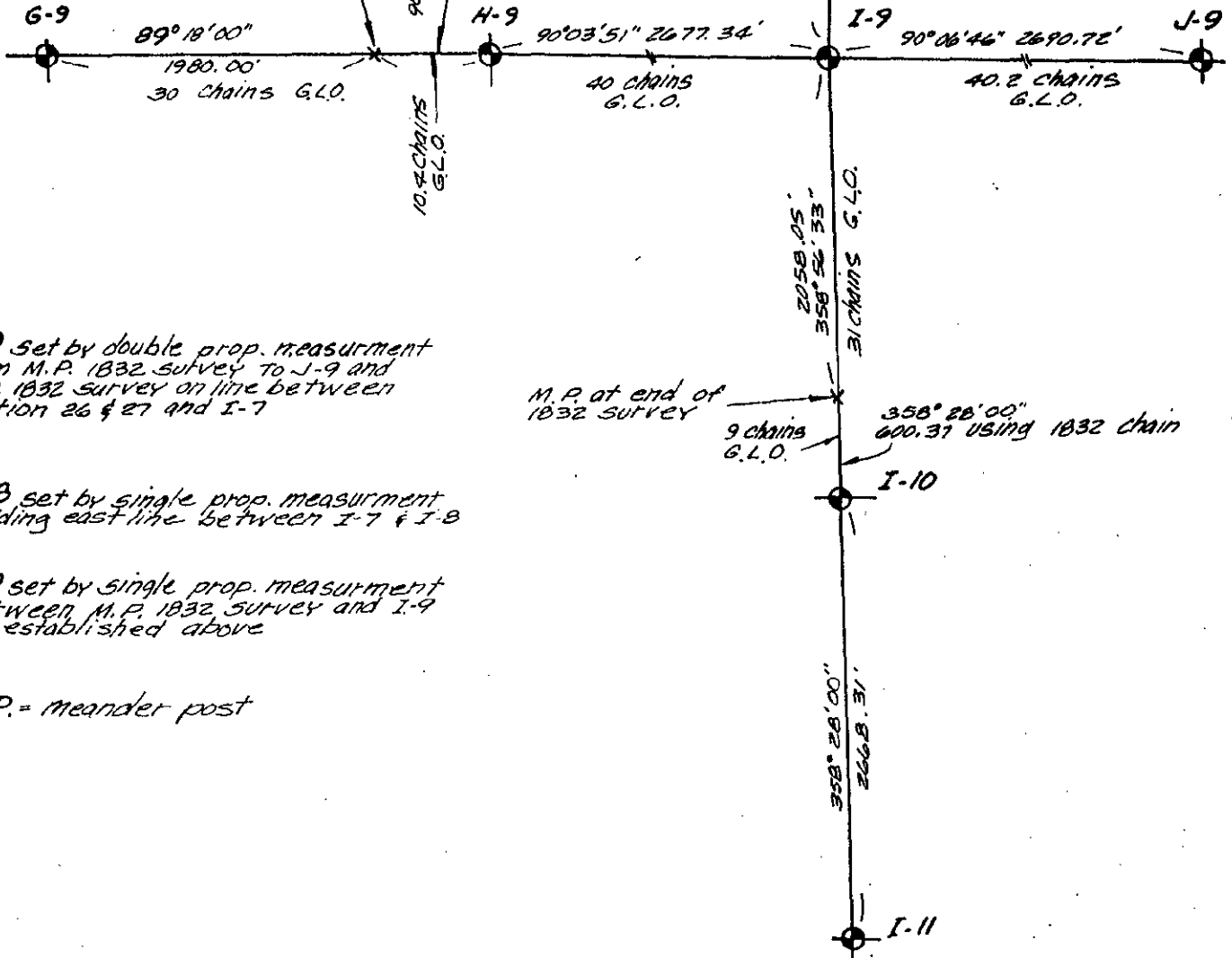
0° 34' 40" 2655.25'  
40' chains G.L.O.

Scale: 1" = 1000



Bearings from Holland  
Engineering Survey

M.P. at end of 1832 survey  
shown on 1871 monument map  
& Monroe, Howlett & Cutlers Add.  
Liber 1, page 68



I-9 set by double prop. measurement  
from M.P. 1832 survey to J-9 and  
M.P. 1832 survey on line between  
section 26 & 27 and I-7

M.P. at end of  
1832 survey

358° 28' 00"  
600.31 using 1832 chain

I-8 set by single prop. measurement  
holding east line between I-7 & I-9

I-9 set by single prop. measurement  
between M.P. 1832 survey and I-9  
as established above

M.P. = meander post