

**OTTAWA COUNTY REMONUMENTATION
LAND CORNER RECORDATION CERTIFICATE
Filing Requirement of Act 74, Mich. P.A. 1970**

For corners in

<u>Ottawa</u> (County)	Located In: <u>Spring Lake</u> <u>Twp.</u>	Corner Code # <u>I-9</u>
1. Public Land Survey	<u>T 8N R 16W</u>	<u>Reference Mon.</u>
	<u>T ___ R ___</u>	<u>to NW corner</u>
	<u>T ___ R ___</u>	<u>Section 26</u>
2. Property Controlling in Section	<u>S ___ T ___ R ___</u>	
3. Miscellaneous Property in Sec.	<u>S ___ T ___ R ___</u>	<u>Seg. #1</u>

RECORDED
96 DEC 20 PM 12:20
Ruby-Ann Hollman
REGISTER OF DEEDS
OTTAWA COUNTY, MI

Register of Deeds Stamp & File Number

4. Lot No. _____, Recorded Plat _____
5. Private Claims _____

I, Carl P. Englert, in a field survey on 12/12, 1996 do hereby state that under requirements of P.A. 74, Michigan P.A. of 1970, the corner points mentioned in lines 1 and 2 above were in conformance with regulations and rules therefore as required in the current manual of survey instructions of the United States Department of the Interior, Bureau of Land Management or by a decree of a Court of Law and /or that the corner points mentioned in lines 3, 4 and 5 above were in conformance with the rules of the Michigan Board of Land Surveyors or by a Decree of a Court of Law; established, re-established, monumented, recovered, found as expressed below:

NOTE: Not more than 2 corners, all in the same town and range, may be recorded on this certificate.

1	A	B	C	D	E	F	G	H	I	J	K	L	M
2		6		5		4		3		2		1	
3													
4		7		8		9		10		11		12	
5													
6		10		17		16		15		14		13	
7													
8		19		20		21		22		23		24	
9									27				
10		30		29		28		27		26		25	
11													
12		31		32		33		34		35		36	
13													

A. Description of original monument and accessories and/or subsequent restoration:
I-9 Section corner common to Sections 22, 23, 26 & 27
G.L.O. 1837 Mullett
Set post corner Sections 22, 23, 26 & 27 on Island on low wetland
Raised a mound

PA. 345 OTTAWA COUNTY
PEER APPROVED 12-9-96
M.D.N.

B. Description of corner evidence found and/or method applied in restoring or reestablishing corner:
I-9 Section corner common to Sections 22, 23, 26 & 27
Lost corner
Established by double prop. measurement from meander post (1832) on South bank of Grand River and corner I-7, and 1832 meander post on South line of Section 22 and corner J-9

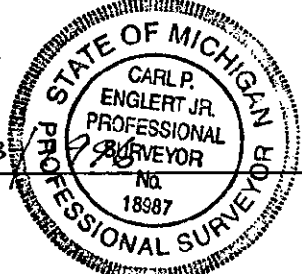
Accepted as a careful and faithful reestablishment of the position of the original corner.
See Other Side

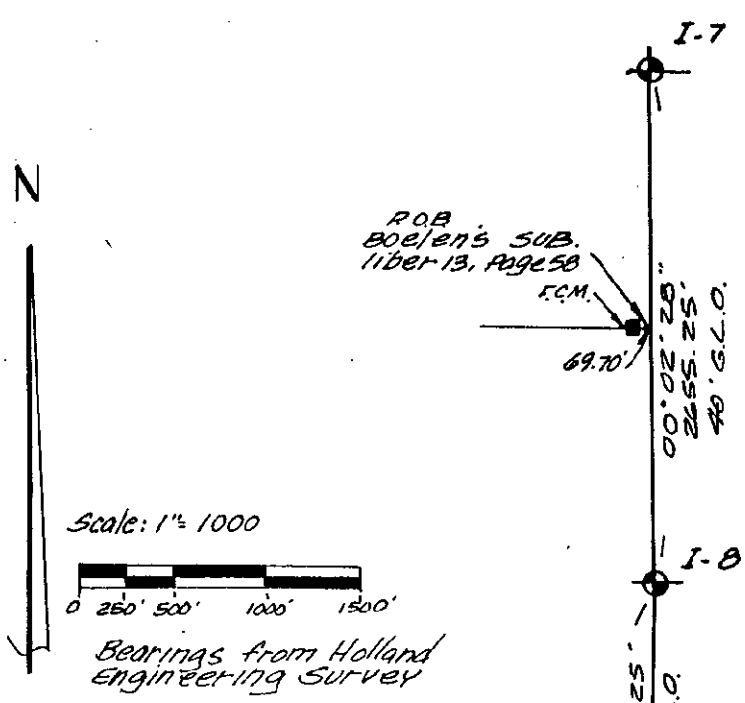
C. Description of monument for corner and accessories established to perpetuate locating the position of the corner:
I-9 Section corner common to Sections 22, 23, 26 & 27
Using J-9 as reference corner as entire line from J-9 to I-9 is in marsh or river.
4" Harrison Cast Iron Monument (O.C. Remon Corner Liber 2, Page 557)
NW Corner Section 27 S89°46'54"W 5353.34' (11-16-95)
N 1/4 Corner Section 26 S89°53'14"E 2690.72'
NE Corner Section 22 N01°18'34"E 5310.45'
W 1/4 Corner Section 26 S01°09'54"E 2658.41'

\$ 11.00
\$ 1.00
PHOTO
PHOTO
CORNERS

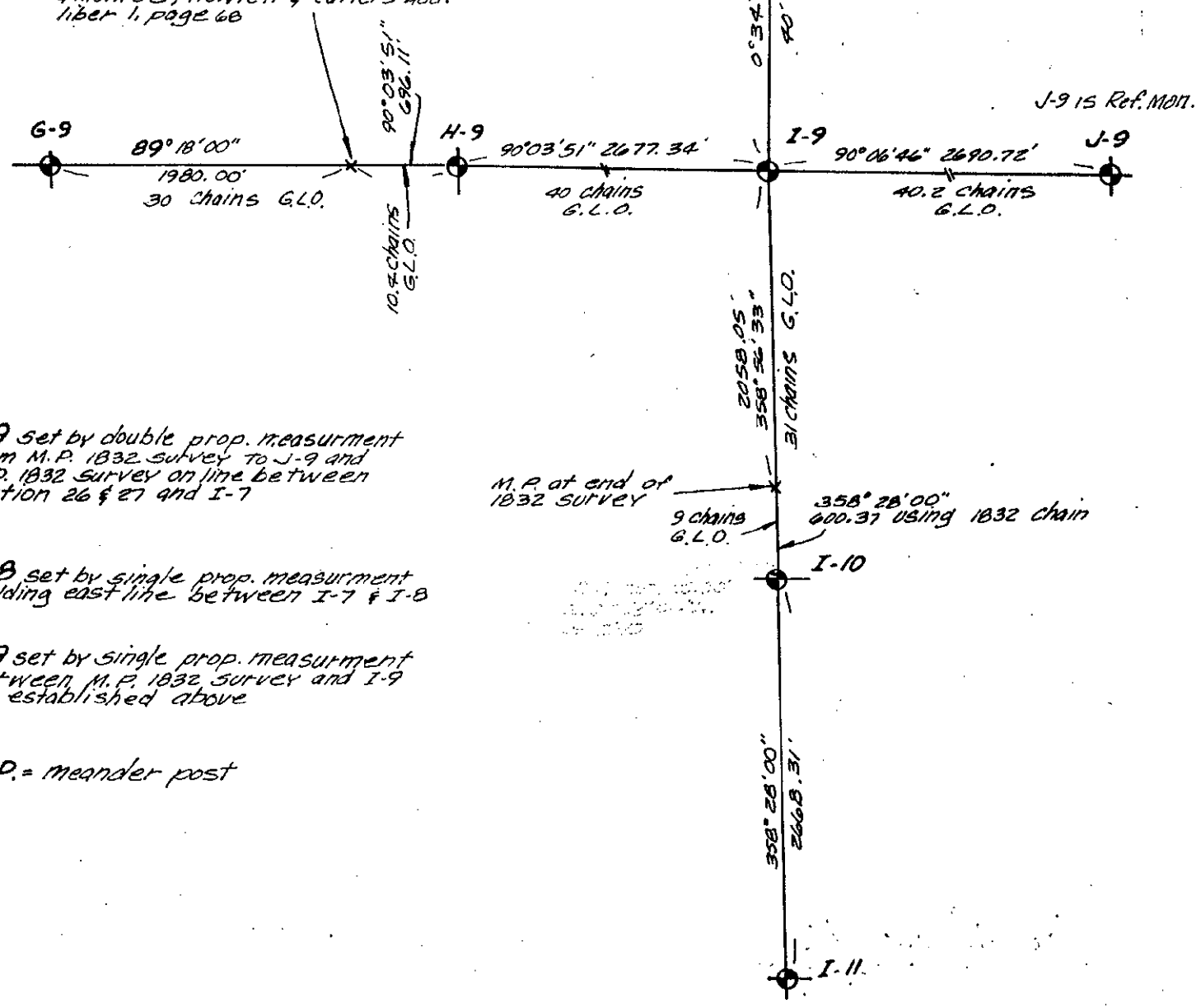
Signed by Carl P. Englert
Surveyor's Michigan License No. 18987

Date 12/13/96





M.P. at end of 1832 survey shown on 1871 Monument Map of Monroe, Howlett & Cutlers Add. Liber 1, page 66



I-9 set by double prop. measurement from M.P. 1832 survey to J-9 and M.P. 1832 survey on line between section 26 & 27 and I-7

I-8 set by single prop. measurement holding east line between I-7 & I-8

I-9 set by single prop. measurement between M.P. 1832 survey and I-9 as established above

M.P. = meander post