

1993
COMMISSION

OTTAWA COUNTY REMONUMENTATION
LAND CORNER RECORDATION CERTIFICATE
Filing Requirement of Act 74, Mich. P.A. 1970

RECORDED

93 DEC 16 PM 1:01

Dorothy Kullman
REGISTER OF DEEDS
OTTAWA COUNTY, MI

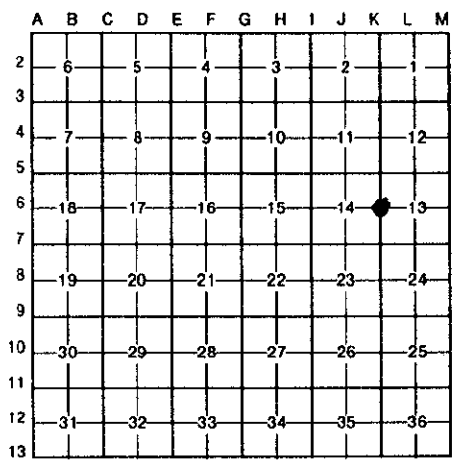
For corners in

Ottawa (County)	Located In:	Corner Code #
1. Public Land Survey	T 8N R 16W	K-6 W 1/4 corner Section 13
	T _____ R _____	_____
	T _____ R _____	_____
	T _____ R _____	_____
2. Property Controlling in Section	S _____ T _____ R _____	_____
	S _____ T _____ R _____	_____
3. Miscellaneous Property in Sec.	S _____ T _____ R _____	_____
	S _____ T _____ R _____	_____

Register of Deeds Stamp & File Number

4. Lot No. _____, Recorded Plat _____
5. Private Claims _____

I, THOMAS E. JOINER in a field survey on 10-28- 19 93, do hereby certify that under requirements of P.A. 74, Michigan P.A. of 1970, the corner points mentioned in lines 1 and 2 above were in conformance with regulations and rules therefore as required in the current manual of survey instructions of the United States Department of the Interior, Bureau of Land Management or by a decree of a Court of Law and/or that the corner points mentioned in lines 3, 4 and 5 above were in conformance with the rules of the Michigan Board of Land Surveyors or by a Decree of a Court of Law; established, re-established, monumented, re-monumented, recovered, found as expressed below:



NOTE: Not more than 4 corners, all in the same town and range, may be recorded on this certificate.

A. Description of original monument and accessories and/or subsequent restoration:

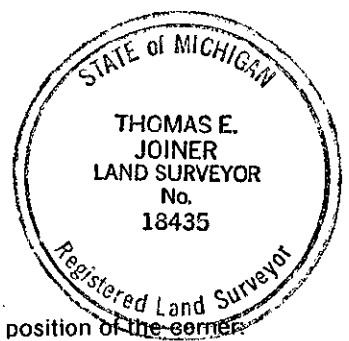
Cast Iron Monument Inscribed Liber 1 Pg. 357 4-10-72
"Ottawa County Section Corner"

- 5.5° W 65.00 12" White Oak
- S 45° W 59.54 16" Yellow Birch
- N 80° W 63.16 14" Maple
- N 45° W 18.30 12" Maple
- East 39.37 16" White Pine

B. Description of corner evidence found and/or method applied in restoring or reestablishing corner:

Found cast iron monument and accepted as a careful and faithful perpetuation of the position of the original corner.

- S.W. 65.00 12" Oak
- S.W. 59.54 16" Birch
- N.W. 18.30 12" Maple
- East 39.37 16" Pine



C. Description of monument for corner and accessories established to perpetuate locating the position of the corner:

Cast Iron Monument

- O.C. Remon tag & nail North side of 20" Pine AZ. 91° 30' 00" 40.30
- O.C. Remon tag & nail South side 10" Twin Maple AZ. 20° 15' 00" 50.20
- O.C. Remon tag & nail Southeast side 16" Maple AZ. 302° 40' 00" 18.29
- O.C. Remon tag & nail North side of 10" Ash AZ. 269° 02' 00" 12.00

Signed by Thomas E. Joiner Date 11-9-93
Surveyor's Michigan License No. 18435