

**OTTAWA COUNTY REMONUMENTATION  
LAND CORNER RECORDATION CERTIFICATE  
Filing Requirement of Act 74, Mich. P.A. 1970**

For corners in

Ottawa (County) Located In: Spring Lake Corner Code # Def #2  
T8N R16W K-10  
 1. Public Land Survey T R Reference  
T R corner to  
T R E 1/2 corner  
 2. Property Controlling S T R Section 26 and  
 in Section S T R Meander corner  
 3. Miscellaneous S T R on South Bank  
 Property in Sec. S T R of Grand River

**RECORDED**

96 DEC 20 PM 12: 20

*Elizabeth S. Hollman*  
 REGISTER OF DEEDS  
 OTTAWA COUNTY, MI

Register of Deeds Stamp & File Number

4. Lot No. \_\_\_\_\_, Recorded Plat \_\_\_\_\_  
 5. Private Claims \_\_\_\_\_

I, Carl P. Englert, in a field survey on 11/12, 1996 do hereby state that under requirements of P.A. 74, Michigan P.A. of 1970, the corner points mentioned in lines 1 and 2 above were in conformance with regulations and rules therefore as required in the current manual of survey instructions of the United States Department of the Interior, Bureau of Land Management or by a decree of a Court of Law and/or that the corner points mentioned in lines 3, 4 and 5 above were in conformance with the rules of the Michigan Board of Land Surveyors or by a Decree of a Court of Law; established, re-established, monumented, recovered, found as expressed below:

NOTE: Not more than 2 corners, all in the same town and range, may be recorded on this certificate.

A	B	C	D	E	F	G	H	I	J	K	L	M
1												
2	6	5	4	3	2	1						
3												
4	7	8	9	10	11	12						
5												
6	18	17	16	15	14	13						
7												
8	19	20	21	22	23	24						
9												
10	30	29	28	27	26	25						
11												
12	31	32	33	34	35	36						
13												

A. Description of original monument and accessories and/or subsequent restoration:

K-10 1/4 corner common to Sections 25 & 26  
 G.L.O. 1832 Britain  
 40.00 Set 1/2 mile post in Marsh  
 45.84 Grand River and set Meander Post  
 Raised a Mound No bearing trees  
 Marsh as before

P.A. 345 OTTAWA COUNTY  
 PEER APPROVED 12-9-96

*C.P. Englert*

B. Description of corner evidence found and/or method applied in restoring or reestablishing corner:

K-10 1/4 corner common to Sections 25 & 26  
 Corner and Meander Post Lost  
 Established corner by measuring North with 1832 Chain to Intersect line from K-9 to Found Iron Spike 1319.70' South of K-9. This is also East line of Oak Park Plat and West line of Plumwood Sub.

See Other Side

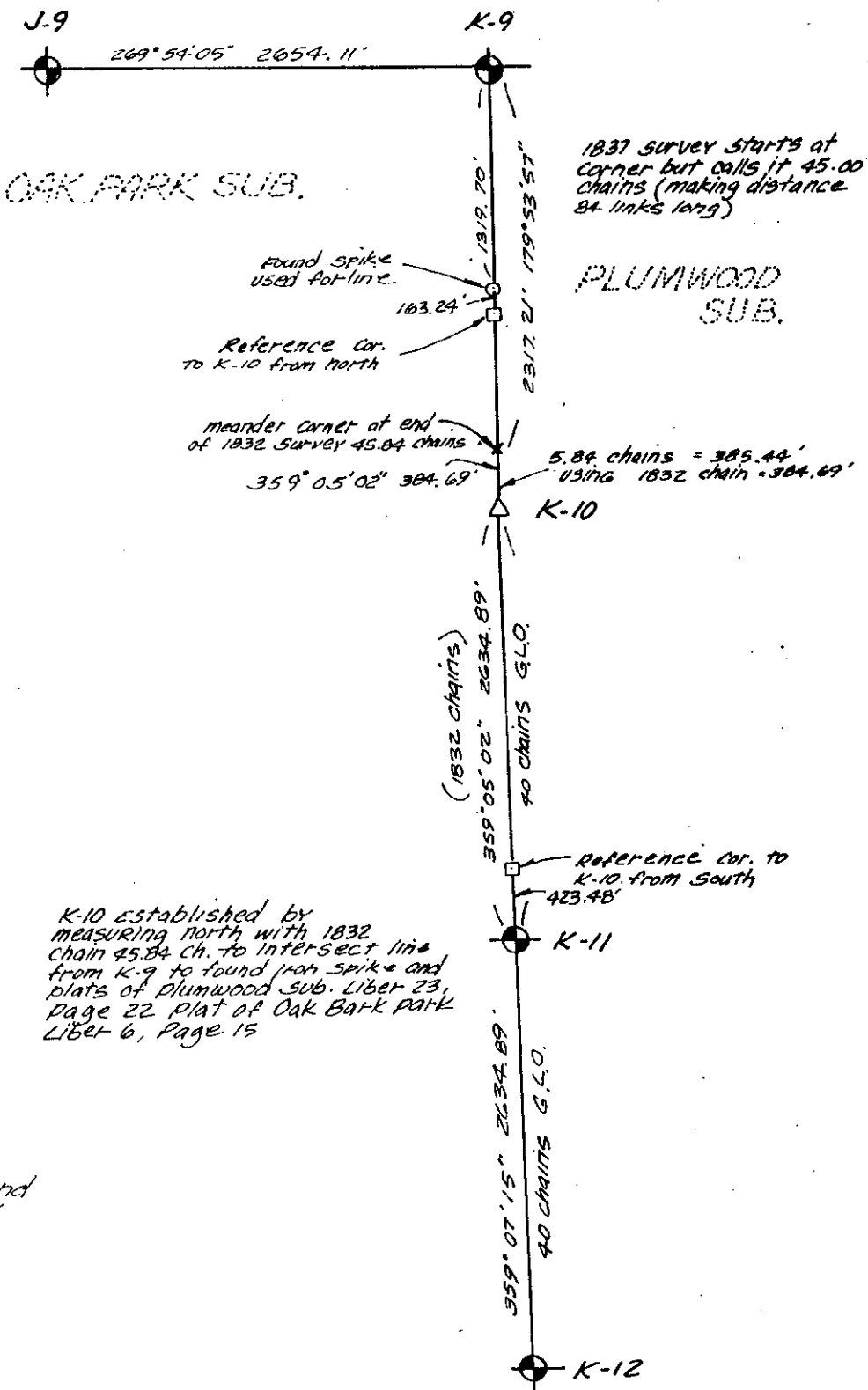
Accepted as a careful and faithful reestablishment of the position of the original corner.

C. Description of monument for corner and accessories established to perpetuate locating the position of the corner:

K-10 1/4 corner common to Sections 25 & 26  
 Reference corner on line from K-9 to position of Meander Post (1832),  
 Set 3/4"x3' Iron Bar with O.C. Remon Cap  
 O.C. Remon nail & tag in NE Side 12" Maple S25°E 34.71'  
 O.C. Remon nail & tag in SE Side 30" Oak N54°E 55.72'  
 O.C. Remon nail & tag in NE Side 20" Pine N33°W 52.24'  
 O.C. Remon nail & tag in NE side 14" Aspen N65°W 33.25'  
 Waters edge of Grand River 60'± South

Signed by Carl P. Englert  
 Surveyor's Michigan License No. 18927

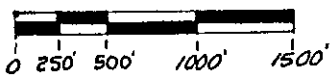
Date 12/13/1996  
 \$ 11.00 CORNER  
 \$ 1.00 PERMANENT  
 \$ 1.00 PROTECTIVE  
 STATE OF MICHIGAN  
 CARL P. ENGLERT JR.  
 PROFESSIONAL SURVEYOR  
 No. 18927  
 PROFESSIONAL SURVEYOR



N



Scale: 1" = 1000'



Bearings from Holland Engineering Survey

K-10 established by measuring north with 1832 chain 45.84 ch. to intersect line from K-9 to found iron spike and plats of Plumwood Sub. Liber 23, Page 22 plat of Oak Bark park Liber 6, Page 15