

OTTAWA COUNTY REMONUMENTATION

RECORDED

LAND CORNER RECORDATION CERTIFICATE
Filing Requirement of Act 74, Mich. P.A. 1970

97 JUL 24 PM 2: 25

For corners in
Ottawa

Rhysia B. Coleman
REGISTER OF DEEDS
OTTAWA COUNTY, MI

Located In:	Corner Code #
Chester Twp. 9N 13W	B-1, N 1/4 cor.
T R	Sec. 6
T R	
T R	
T R	
S T R	
S T R	
S T R	
S T R	

Register of Deeds Stamp & File Number

4. Lot No. _____, Recorded Plat _____
5. Private Claims _____

I, Randal D. Feenstra, in a field survey on March 25, 19 96 do hereby state that under requirements of P.A. 74, Michigan P.A. of 1970, the corner points mentioned in lines 1 and 2 above were in conformance with regulations and rules therefore as required in the current manual of survey instructions of the United States Department of the Interior, Bureau of Land Management or by a decree of a Court of Law and /or that the corner points mentioned in lines 3, 4 and 5 above were in conformance with the rules of the Michigan Board of Land Surveyors or by a Decree of a Court of Law; established, re-established, monumented, recovered, found as expressed below:

A	B	C	D	E	F	G	H	I	J	K	L	M
2	6	5	4	3	2	1						
3												
4	7	8	9	10	11	12						
5												
6	18	17	16	15	14	13						
7												
8	19	20	21	22	23	24						
9												
10	30	29	28	27	26	25						
11												
12	31	32	33	34	35	36						
13												

NOTE: Not more than 2 corners, all in the same town and range, may be recorded on this certificate.

A. Description of original monument and accessories and/or subsequent restoration:

G.L.O.	L-5, P-271, (1987)	L-6, P-122 (1990)
Not Set	1/2" capped rerod	Cast Iron Monument
	P.K. W. side P.Pole	Musk. cor. W 131.70'
	NW cor. hse.fndn.	Maple clump S 30.63'
	Spike NW side 6" maple	1/2" Iron Rod NE 34.82'
	Iron West 131.99'	NW cor. brick face SE 110.10'

B. Description of corner evidence found and/or method applied in restoring or reestablishing corner:

B-1 Found: Broken Cast Iron Monument in Gravel

Nail E. side Maple Clump	S 30.62'
1/2" Iron rod	Az. 58° 34.82'
NW Corner Brick Face	Az. 137° 110.02'
Pk. Nail W side P. Pole	Az. 182° 62.79'
1" Pipe (Musk. cor.)	W 131.80'
Spike NW side 10" maple	Az. 221° 52.5'± (overgrown)

This position not established by original government surveyors. This monument is accepted as the best available evidence of the position of the corner.

P.A. 345 OTTAWA COUNTY

PEER APPROVED 12-9-96

C. Description of monument for corner and accessories established to perpetuate locating the position of the corner:

B-1 Broken Cast Iron Monument in Gravel (0.04' S. of Townline, See Sketch on Back)	
Ottawa County Remon Nail & Tag in W side P. Pole	Az. 182° 62.78'
Ottawa County Remon Nail & Tag in NW side 10" Maple	Az. 221° 52.31'
Brick face NW cor. house	Az. 137° 110.02'
1" Pipe (Musk. cor.)	W 131.80'
"X" on N. End conc. culv.	Az. 7° 24.55'
Centerline E-W Gravel Road 1'N	

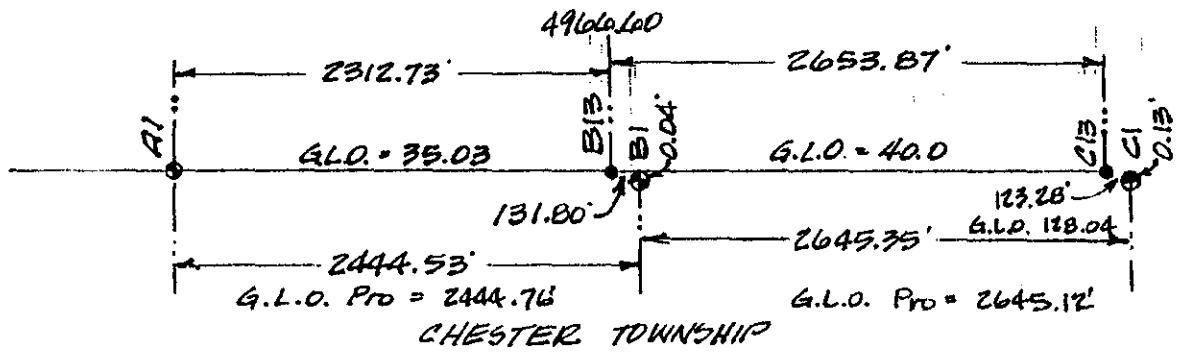


\$ 11.00 CORNER

Signed by Randal D. Feenstra
Surveyor's Michigan License No. 37275

Date September 16, 1996

MUSKEGON COUNTY



11.00 CORNER