

RECORDED

OTTAWA COUNTY REMONUMENTATION

97 JUL 24 PM 2: 24

LAND CORNER RECORDATION CERTIFICATE
Filing Requirement of Act 74, Mich. P.A. 1970

Phyllis Kallman
REGISTER OF DEEDS
OTTAWA COUNTY, MI

For corners in
Ottawa

(County)

Located In:	Chester Twp. 9N 13W	Corner Code #	C-1, NE cor.
1. Public Land Survey	T <u> </u> R <u> </u>		Sec. 6
	T <u> </u> R <u> </u>		
	T <u> </u> R <u> </u>		
	T <u> </u> R <u> </u>		
2. Property Controlling in Section	S <u> </u> T <u> </u> R <u> </u>		
	S <u> </u> T <u> </u> R <u> </u>		
3. Miscellaneous Property in Sec.	S <u> </u> T <u> </u> R <u> </u>		
	S <u> </u> T <u> </u> R <u> </u>		

Register of Deeds Stamp & File Number

4. Lot No. _____, Recorded Plat _____
5. Private Claims _____

I, Randal D. Feenstra, in a field survey on Sept. 10, 1996 do hereby state that under requirements of P.A. 74, Michigan P.A. of 1970, the corner points mentioned in lines 1 and 2 above were in conformance with regulations and rules therefore as required in the current manual of survey instructions of the United States Department of the Interior, Bureau of Land Management or by a decree of a Court of Law and /or that the corner points mentioned in lines 3, 4 and 5 above were in conformance with the rules of the Michigan Board of Land Surveyors or by a Decree of a Court of Law; established, re-established, monumented, recovered, found as expressed below:

NOTE: Not more than 2 corners, all in the same town and range, may be recorded on this certificate.

A	B	C	D	E	F	G	H	I	J	K	L	M
1												
2	6	5	4	3	2	1						
3												
4	7	8	9	10	11	12						
5												
6	18	17	16	15	14	13						
7												
8	19	20	21	22	23	24						
9												
10	30	29	28	27	26	25						
11												
12	31	32	33	34	35	36						
13												

A. Description of original monument and accessories and/or subsequent restoration:

G.L.O. (1838)	L-5, P-271, (1987)	L-6, P-122 (1990)
Rasselas Whitcomb	1" Solid Bar	Cast Iron Monument
10" Beech N64°E 14 lks	Rerod W123.25'	3/4" solid iron Musk cor. W 123.24'
12" Hemlock N45°W 31 lks	CL St. sign post S30°E 43.0'	6" Poplar NNE 84.86'
	CL STOP sign post N80°E 83.0'	7" Cherry SE 103.78'
		CL STOP sign WSW 49.00'

B. Description of corner evidence found and/or method applied in restoring or reestablishing corner:

C-1 Cast Iron Monument in Gravel

3/4" Solid Iron - Muskegon Corner W 123.28'

CL Stop sign Az. 242° 49.08'

P.A. 345 OTTAWA COUNTY
PEER APPROVED 12-9-96

R.D.F.

Accepted as a careful and faithful perpetuation of the position of the original corner.

C. Description of monument for corner and accessories established to perpetuate locating the position of the corner:

C-1 Cast Iron Monument in Gravel (0.13' of Townline, See Sketch on Back)

3/4" Solid Iron - Muskegon corner W 123.28'

Ottawa County Remon Nail & Tag in SE side 10" Poplar Az. 18° 84.74'

Ottawa County Remon Nail & Tag in W side P. Pole Az. 166° 139.98'

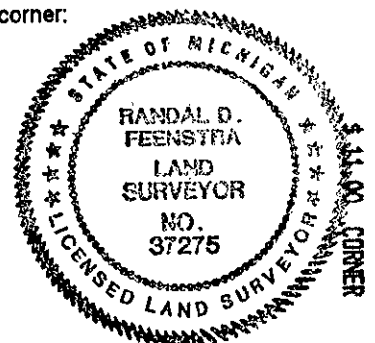
Ottawa County Remon Nail & Tag in S side P. Pole Az. 65° 75.85'

CL Stop Sign Az. 242° 49.08'

On CL bit. road to S

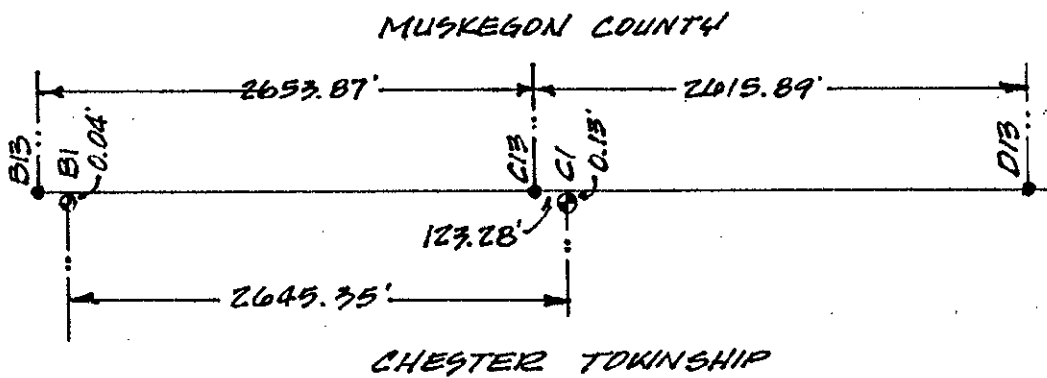
On CL gravel road to E

CL gravel road to W 2' S



Signed by Randal D. Feenstra
Surveyor's Michigan License No. 37275

Date September 16, 1996



NOTE: G.L.O. INFORMATION INDICATES A DISTANCE OF 128.04' FROM C1 TO C13.