

SURVEY & REMONUMENTATION

FEB 27 1998

OTTAWA COUNTY REMONUMENTATION LAND CORNER RECORDATION CERTIFICATE Filing Requirement of Act 74, Mich. P.A. 1970

For corners in **SECTION**

<u>Ottawa</u> <small>(County)</small>	Located In: <u>Chester Twp.</u>	Corner Code #	
1. Public Land Survey	T <u>9N</u> R <u>13W</u>	D-1, N 1/4 cor.	
	T ___ R ___	Sec. 5	
	T ___ R ___		
	T ___ R ___		
2. Property Controlling in Section	S ___ T ___ R ___		
	S ___ T ___ R ___		
3. Miscellaneous Property in Sec.	S ___ T ___ R ___		
	S ___ T ___ R ___		

RECORDED
97 DEC -8 AM 11:38

Randy [Signature]
REGISTER OF DEEDS
OTTAWA COUNTY, MI

Register of Deeds Stamp & File Number

4. Lot No. _____, Recorded Plat _____
5. Private Claims _____

I, Randal D. Feenstra, in a field survey on Mar. 12, 1997 do hereby state that under requirements of P.A. 74, Michigan P.A. of 1970, the corner points mentioned in lines 1 and 2 above were in conformance with regulations and rules therefore as required in the current manual of survey instructions of the United States Department of the Interior, Bureau of Land Management or by a decree of a Court of Law and/or that the corner points mentioned in lines 3, 4 and 5 above were in conformance with the rules of the Michigan Board of Land Surveyors or by a Decree of a Court of Law, established, re-established, monumented, recovered, found as expressed below:

NOTE: Not more than 2 corners, all in the same town and range, may be recorded on this certificate.

1	A	B	C	D	E	F	G	H	I	J	K	L	M
2		6		5		4		3		2		1	
3													
4		7		8		9		10		11		12	
5													
6		18		17		16		15		14		13	
7													
8		19		20		21		22		23		24	
9													
10		30		29		28		27		26		25	
11													
12		31		32		33		34		35		36	
13													

A. Description of original monument and accessories and/or subsequent restoration:

G.L.O. Whitcomb (1838)	Thomas Joiner, L-4, P. 272
Not Set	Set Cast Iron Monument (1981)
	6" Poplar NE 75.58'
	NE Cor. Concrete Headwall S 116.15'
	CL 36th Ave. W 66.60'
	6" Poplar NNW 99.91'

NOTE: Joiner replaced a found capped iron, and used old witnesses from Ottawa County Surveyor records

P. Pole	NNW	50.20
Road sign	N	35.60
Stop sign	NE	31.30
24" Elm	SW	150.00

NO DATE AVAILABLE

Ottawa County Surveyor Records indicates a distance of 2661.12 feet from D1 to E1 - (measured 2661.93 feet)

B. Description of corner evidence found and/or method applied in restoring or reestablishing corner:

D-1 Found: Cast Iron Monument

CL 36th Ave.	W	66.60'
NE Corner Concrete Headwall	S	116.15'

P.A. 345 OTTAWA COUNTY
FEER APPROVED 12-1-97

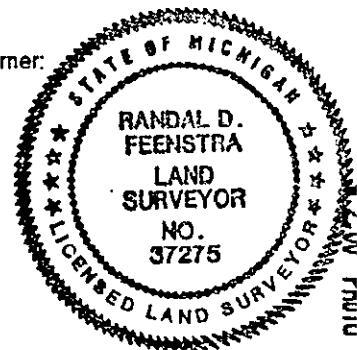
R.D.F.

This position not established by original government surveyors. This monument is accepted as the best available evidence of the position of the corner.

Note: Most of previous witnesses were destroyed, as Road Commission performed safety clearance on this dangerous intersection.

C. Description of monument for corner and accessories established to perpetuate locating the position of the corner:

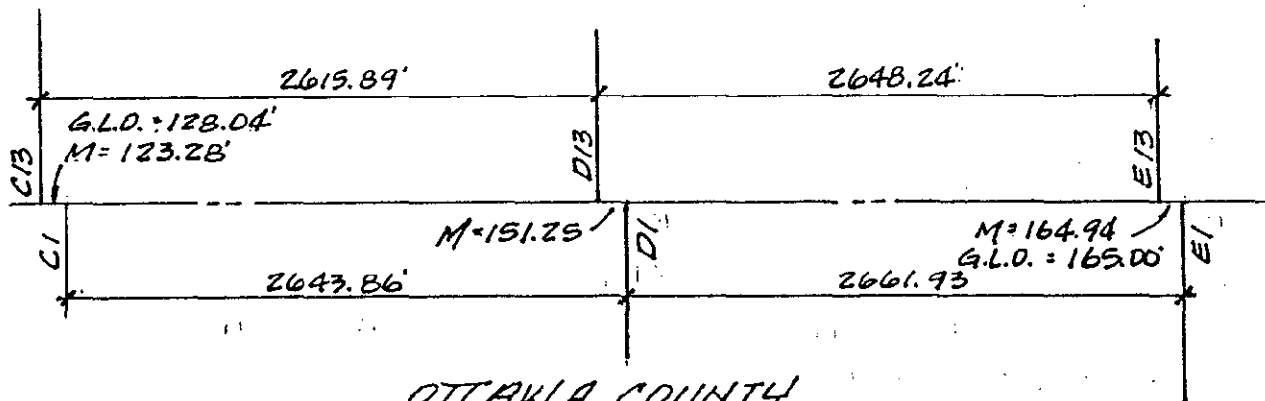
Set Cast Iron Box around found Monument (on Townline to North, See Sketch)		
CL Sherman	S	1.25'
CL 36th Ave.	W	66.60'
Apex 2 1/2" Galvanized Fence Corner	N42°E	53.90'
Ottawa County Remon Nail & Tag in NE Side RR Tie Fence Post	S66°E	132.90'
Ottawa County Remon Nail & Tag in N Side RR Tie Fence Post	S27°E	126.52'
NE Corner Concrete Headwall	S 5°E	116.15'
Found 1/2" Iron Rod for the Muskegon County Corner	W	151.25'



Signed by Randal D. Feenstra
Surveyor's Michigan License No. 37275

Date March 13, 1997

MUSKEGON COUNTY
CASNOVIA TWP.



OTTAWA COUNTY
CHESTER TWP.

SURVEY &
REMONUMENTATION

FEB 27 1998

SECTION