

APR 05 1996

OTTAWA COUNTY REMONUMENTATION

COMMISSION

**LAND CORNER RECORDATION CERTIFICATE
Filing Requirement of Act 74, Mich. P.A. 1970**

For corners in
Ottawa

Located In: Corner Code #

		Chester Twp.		
		9N	13W	G-2, E 1/4 cor.
1. Public Land Survey	T	R		Sec. 4
	T	R		
	T	R		
	T	R		
2. Property Controlling in Section	S	T	R	
	S	T	R	
3. Miscellaneous Property in Sec.	S	T	R	
	S	T	R	

RECORDED

95 NOV 29 PM 1:35

Randy D. Feenstra
REGISTER OF DEEDS
OTTAWA COUNTY, MI

Register of Deeds Stamp & File Number

4. Lot No. _____, Recorded Plat _____
5. Private Claims _____

I, Randal D. Feenstra, in a field survey on Nov 6, 1995 do hereby state that under requirements of P.A. 74, Michigan P.A. of 1970, the corner points mentioned in lines 1 and 2 above were in conformance with regulations and rules therefore as required in the current manual of survey instructions of the United States Department of the Interior, Bureau of Land Management or by a decree of a Court of Law and /or that the corner points mentioned in lines 3, 4 and 5 above were in conformance with the rules of the Michigan Board of Land Surveyors or by a Decree of a Court of Law; established, re-established, monumented, recovered, found as expressed below:

NOTE: Not more than 2 corners, all in the same town and range, may be recorded on this certificate.

	A	B	C	D	E	F	G	H	I	J	K	L	M
1													
2	6		5		4		3		2				1
3													
4	7		8		9		10		11				12
5													
6	18		17		16		15		14				13
7													
8	19		20		21		22		23				24
9													
10	30		29		28		27		26				25
11													
12	31		32		33		34		35				36
13													

A. Description of original monument and accessories and/or subsequent restoration:

G.L.O. (1838)	L-5, P-90, (1983)	L-5, P-272 (1987)
Rasselas Whitcomb	C.I.M.	C.I.M.
14" Elm S52°E 21 lks.	Tele Ped. WNW 43.80'	3" Elm SW 38.91'
18" Beech N20°W 8 lks	3" Elm SW 38.88'	Guard Rail Post SSW 114.70'
	Guard Rail Post SSW 114.71'	Guard Rail Post SSE 114.62'
	Guard Rail Post SSE 114.62'	24" Ash E 101.23'

B. Description of corner evidence found and/or method applied in restoring or reestablishing corner:

Found: C.I.M. in box Accepted as a careful and faithful perpetuation of the position of the original corner.

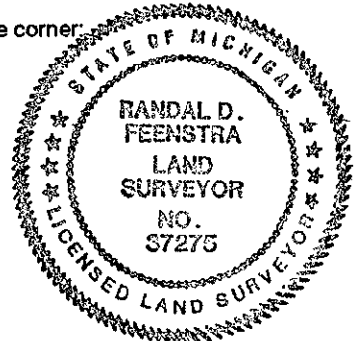
Nail in Top Guard Rail Post	SSW 114.54'
Nail in Top Guard Rail Post	SSE 114.48'
Nail in N side 10" stump	SW 38.18'
Nail & Tag in S side 28" Ash	E 101.18'

P.A. 345 OTTAWA COUNTY
PEER APPROVED 11/20/95

Randy D. Feenstra
R.D.F.

C. Description of monument for corner and accessories established to perpetuate locating the position of the corner:

G-2	C.I.M. in box		
	Ottawa County Remon Nail & Tag in top Guard Rail Post	189°	114.54'
	Ottawa County Remon Nail & Tag in top Guard Rail Post	171°	114.51'
	Ottawa County Remon Nail & Tag in S side 28" Ash	93°	101.16'
	Ottawa County Remon. Nail & Tag in SE side 10" Maple	212°	65.53'



1' W of centerline 24th Ave.

Signed by Randal D. Feenstra
Surveyor's Michigan License No. 37275

Date November 6, 1995